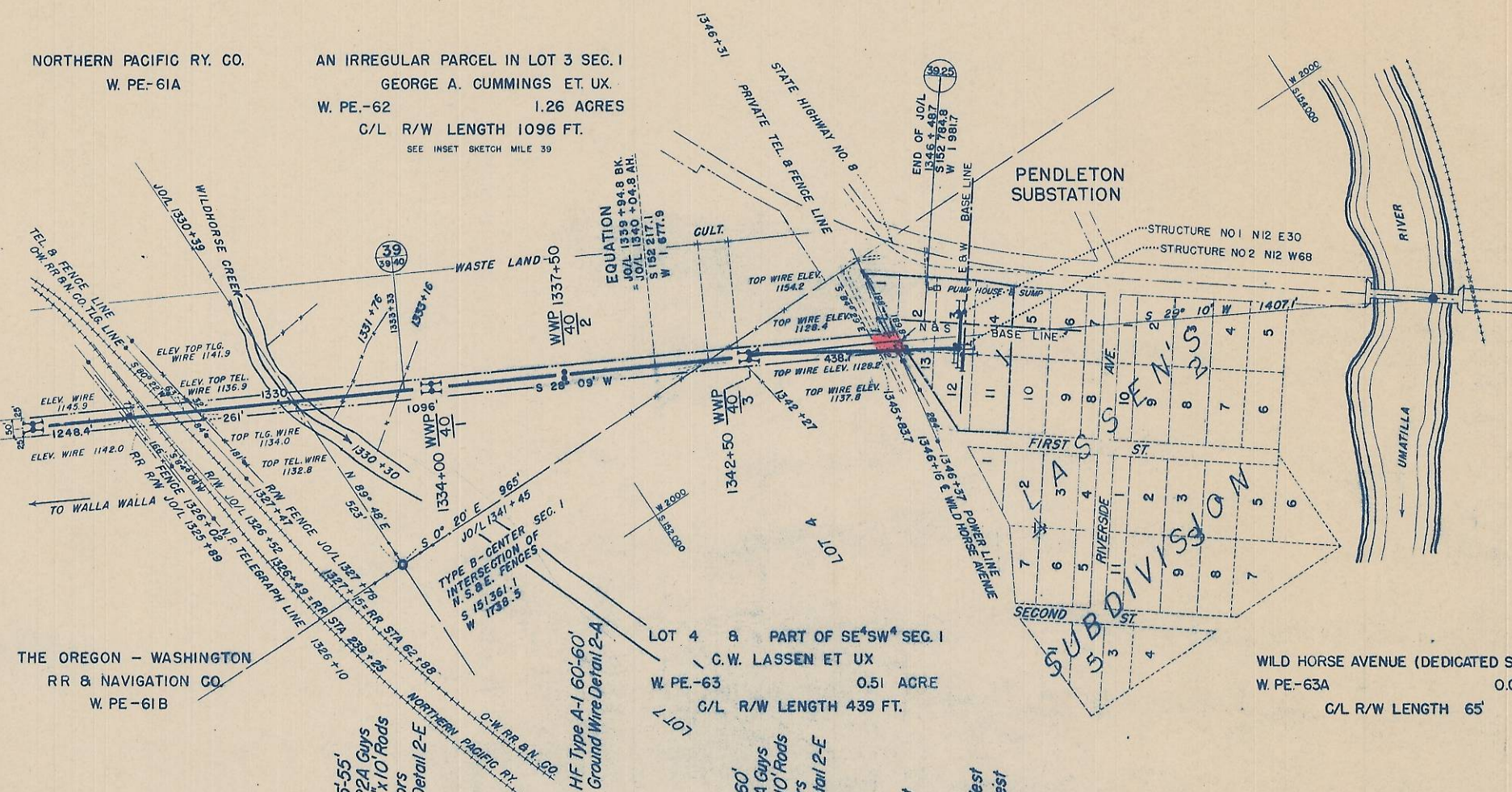


NORTHERN PACIFIC RY. CO.
W. PE-61A

AN IRREGULAR PARCEL IN LOT 3 SEC. 1
GEORGE A. CUMMINGS ET. UX.
W. PE.-62 1.26 ACRES
C/L R/W LENGTH 1096 FT.
SEE INSET SKETCH MILE 39

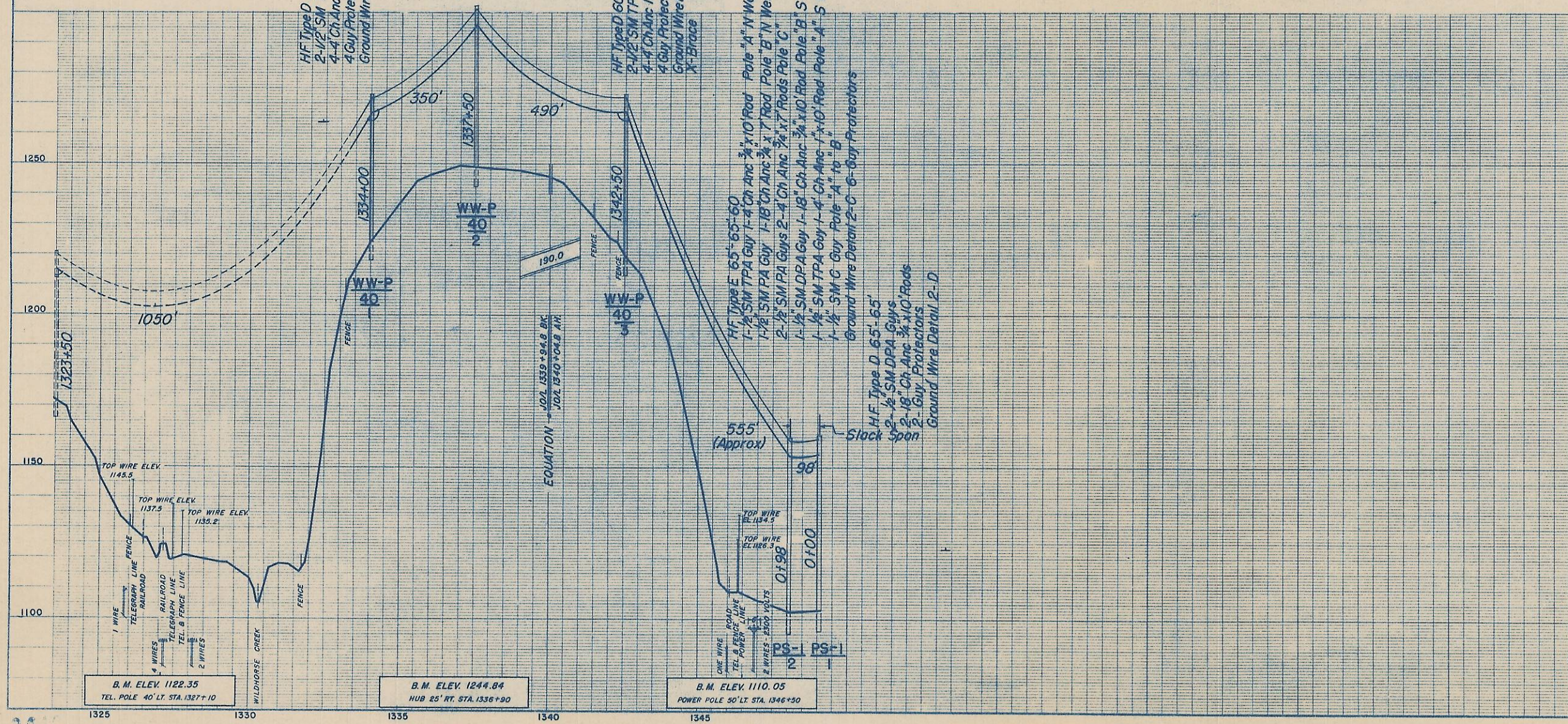


RE-ESTABLISHED FROM REFERENCE POINTS SHOWN IN LASSEN'S SUBDIVISION PLAT
S 154 015.7
E 2 667.5

THE OREGON - WASHINGTON RR & NAVIGATION CO.
W. PE-61B

LOT 4 & PART OF SE 1/4 SW 1/4 SEC. 1
C.W. LASSEN ET UX
W. PE.-63 0.51 ACRE
C/L R/W LENGTH 439 FT.

WILD HORSE AVENUE (DEDICATED STREET)
W. PE.-63A 0.07 ACRE
C/L R/W LENGTH 65'



The conductor curve shown is that used for determining tower locations

1/4" ICE ZONE USC & GS DATUM

APPROVED	DATE
FOR DESIGN	12-5-40
FOR CONSTRUCTION	

NO	REVISION	By	Date	Approved
1	STRUCTURES ADDED	JHP	1-31-41	

UNITED STATES DEPARTMENT OF THE INTERIOR
BONNEVILLE POWER ADMINISTRATION
PAUL J. RAVER, ADMINISTRATOR

WALLA WALLA - PENDLETON
69 KV TRANSMISSION LINE
PLAN - PROFILE OF JO-40
STA. 1333+33 TO STA. 1346+50.7
UMATILLA COUNTY, OREGON
SECTION 1 T 2 N. R. 32 E. WM.

Submitted: *CAM. Plan*
Recommended: *Don. Campbell*
Approved: *Paul J. Raver*

Designed by: *W. H. W.*
Checked by: *LHO*

Date: 11-6-40
C119-340-D1
40-NO.40