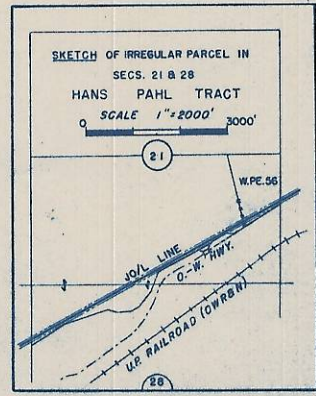
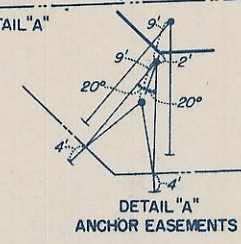


JO/L 1072+56.5  
Δ 45° 44' LT. WW-P  
S 135 577.2  
E 18 099.9



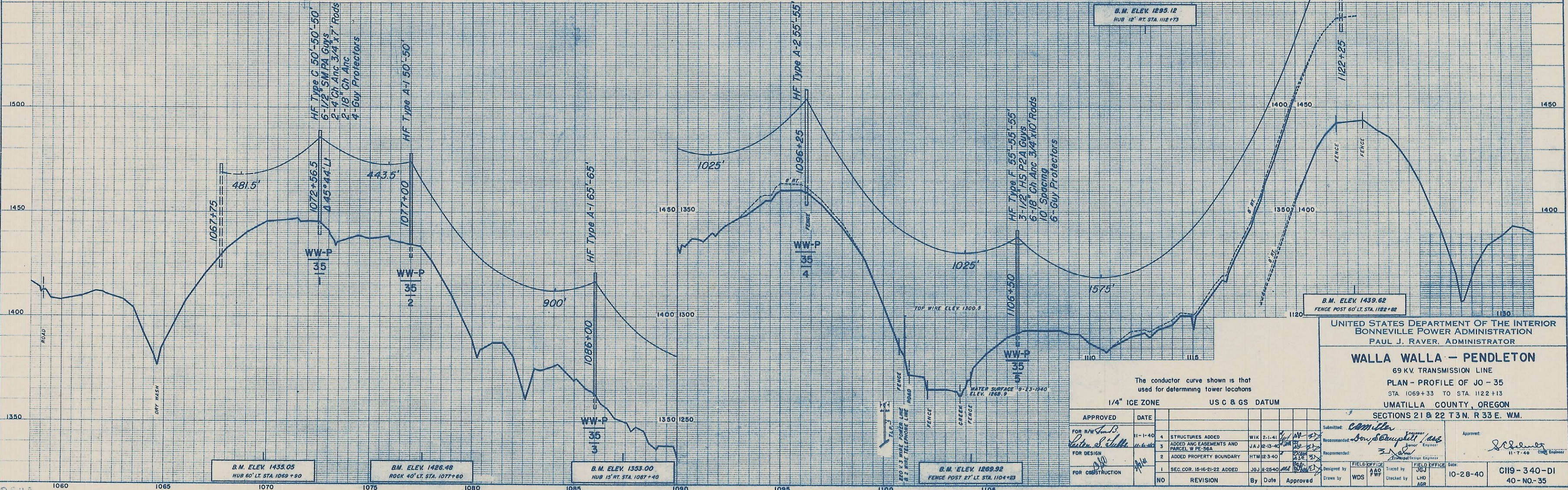
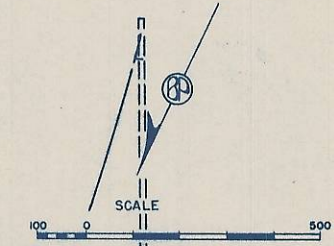
AN IRREGULAR PARCEL IN S<sup>2</sup>  
SEC. 21 & THE N<sup>2</sup> SEC. 28  
HANS PAHL  
W. PE.-57 6.06 ACRES  
C/L R/W LENGTH 5278 FT.  
(SEE INSET SKETCH)

LOTS 6 & 8 SEC 22  
JOHN ELMER McCORMMACH  
W PE-56A  
ANCHOR EASEMENTS

LOTS 6 & 7 AND W 62<sup>5</sup> RODS N. OF STATE HWY. NW<sup>4</sup> SEC. 23,  
LOTS 5, 6, 7, & 8 N. OF STATE HWY. AND THE NE<sup>4</sup> SEC. 22,  
AN IRREGULAR PARCEL IN THE E<sup>2</sup> SE<sup>4</sup> SEC. 21  
JOHN ELMER McCORMMACH  
W. PE.-56 9.00 ACRES  
C/L R/W LENGTH 7846 FEET  
(SEE INSET SKETCH)

TYPE C  
DOUBLE PROPORTION  
S 138 108.1  
E 16 683.4

Type B  
N, E&W Fence  
S 132 822.7  
E 16 667.4



UNITED STATES DEPARTMENT OF THE INTERIOR  
Bonneville Power Administration  
PAUL J. RAYER, ADMINISTRATOR

**WALLA WALLA - PENDLETON**  
69 KV. TRANSMISSION LINE  
PLAN - PROFILE OF JO - 35  
STA 1069+33 TO STA 1122+13  
UMATILLA COUNTY, OREGON  
SECTIONS 21 & 22 T3N. R 33 E. WM.

The conductor curve shown is that used for determining tower locations  
1/4" ICE ZONE US C & GS DATUM

APPROVED	DATE	REVISION	BY	DATE	APPROVED
FOR R/W	11-1-40	4	STRUCTURES ADDED	WIK 2-1-41	
FOR DESIGN	11-6-40	3	ADDED ANCHOR EASEMENTS AND PARCEL W.P.E. 56A	JAJ 2-13-40	
FOR CONSTRUCTION		2	ADDED PROPERTY BOUNDARY	HTM 12-3-40	
		1	SEC. COR. 16-16-21-22 ADDED	JGU 8-26-40	
		NO			

Submitted: *Camilla*  
Recommended: *Don Campbell*  
Designed by: *JGU*  
Checked by: *WDS*  
Traced by: *JGU*  
Date: 10-28-40  
CII9-340-DI  
40-NO-35