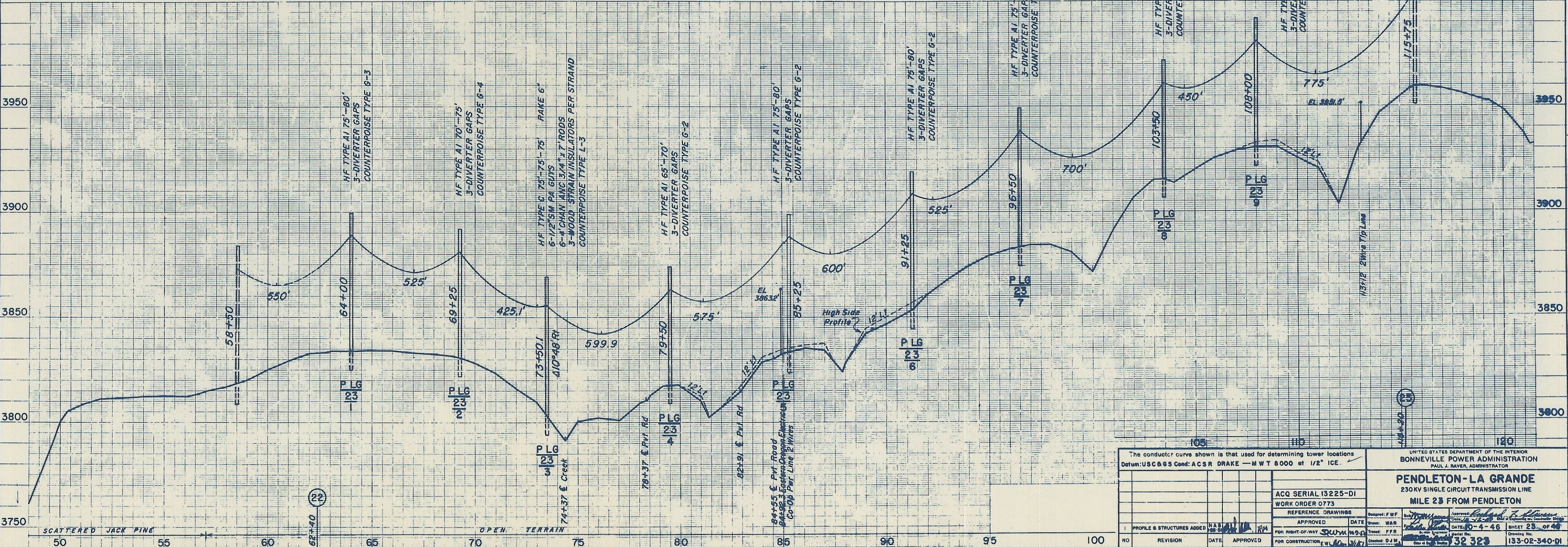
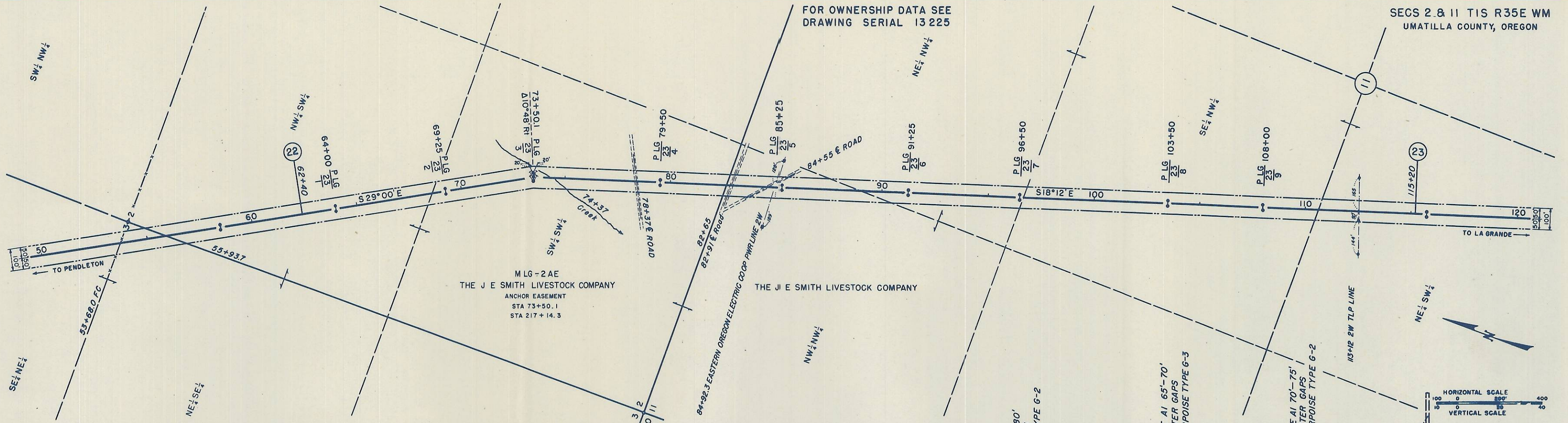


FOR OWNERSHIP DATA SEE
DRAWING SERIAL 13 225

SECS 2 & 11 T1S R35E WM
UMATILLA COUNTY, OREGON



The conductor curve shown is that used for determining tower locations
Datum: USC & G S Coord: ACS R DRAKE - MWT 8000 at 1/2" ICE.

UNITED STATES DEPARTMENT OF THE INTERIOR
BONNEVILLE POWER ADMINISTRATION
PAUL J. RAYER, ADMINISTRATOR

PENDLETON-LA GRANDE
230KV SINGLE CIRCUIT TRANSMISSION LINE
MILE 23 FROM PENDLETON

ACQ SERIAL 13225-DI
WORK ORDER 0773

REFERENCE DRAWINGS

APPROVED DATE: 10-4-46

FOR RIGHT-OF-WAY

FOR CONSTRUCTION

DESIGNED: F.W.F.
DRAWN: WAR
CHECKED: D.J.M.

DATE: 10-4-46

SHEET 23 OF 46

32 323

133-02-340-DI