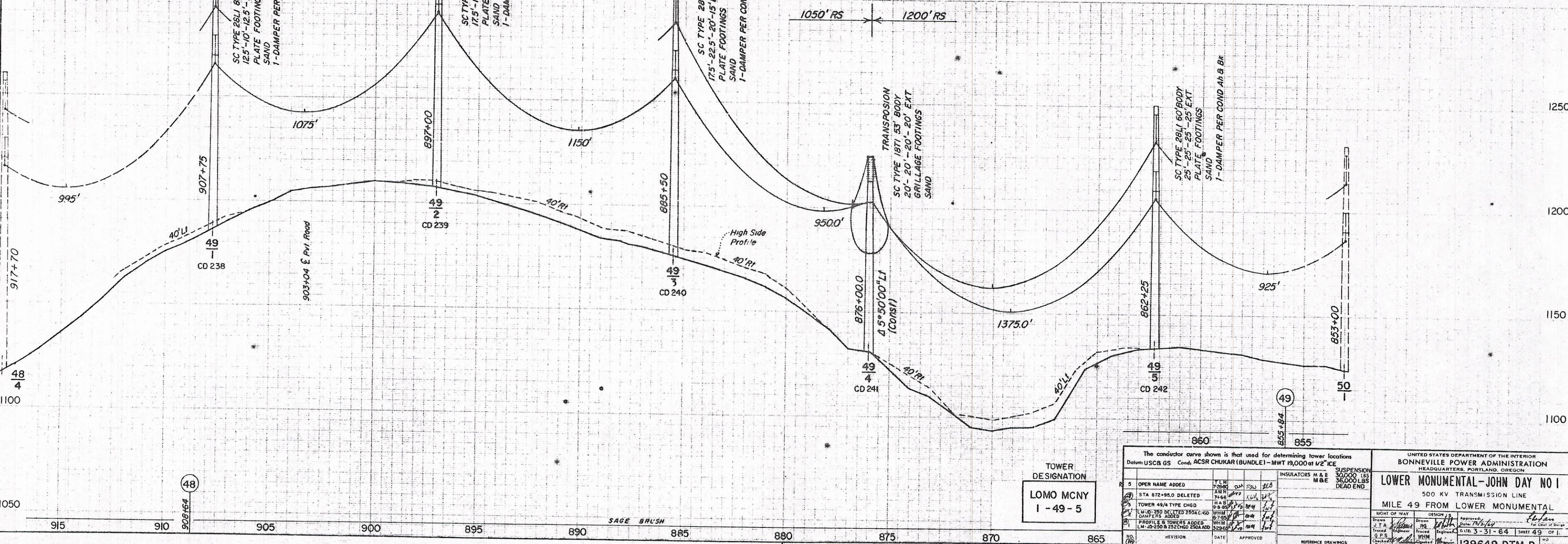
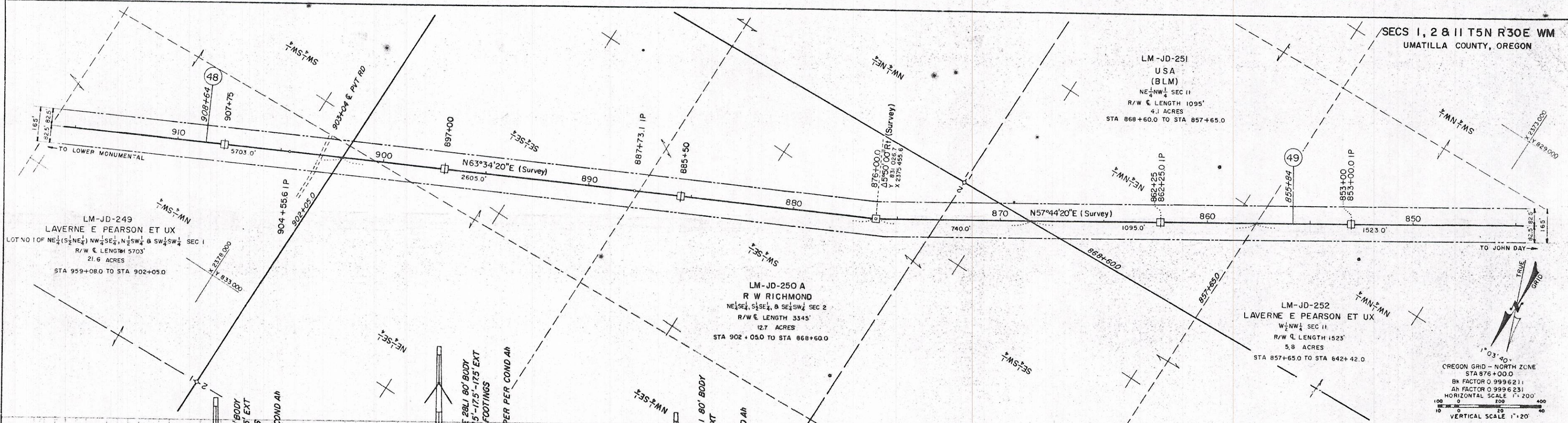
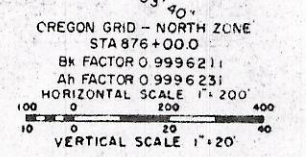


LM-JD-251
USA
(BLM)
NE 1/4 NW 1/4 SEC 11
R/W & LENGTH 1095'
4.1 ACRES
STA 868+60.0 TO STA 857+65.0

LM-JD-250 A
R W RICHMOND
NE 1/4 SE 1/4, S 1/2 SE 1/4, & SE 1/4 SW 1/4 SEC 2
R/W & LENGTH 3345'
12.7 ACRES
STA 902+05.0 TO STA 868+60.0

LM-JD-252
LAVERNE E PEARSON ET UX
W 1/2 NW 1/4 SEC 11
R/W & LENGTH 1523'
5.8 ACRES
STA 857+65.0 TO STA 842+42.0

LM-JD-249
LAVERNE E PEARSON ET UX
LOT NO 1 OF NE 1/4 (S 1/2 NE 1/4) NW 1/4 SE 1/4, N 1/2 SW 1/4 & SW 1/4 SW 1/4 SEC 1
R/W & LENGTH 5703'
21.6 ACRES
STA 959+08.0 TO STA 902+05.0



TOWER DESIGNATION
**LOMO MCNY
1-49-5**

The conductor curve shown is that used for determining tower locations Datum: USCGA GS Cond: ACSR CHUKAR (BUNDLE) - MWT 19,000 at 1/2" ICE		SUSPENSION	
NO.	REVISION	DATE	APPROVED
1	OPER NAME ADDED	7/28/00	[Signature]
2	STA 872+95.0 DELETED	8/18/00	[Signature]
3	TOWER 49/A TYPE CHGD	8/18/00	[Signature]
4	LM-JD-250 DELETED 250A-C-650	8/18/00	[Signature]
5	PROFILE & TOWERS ADDED	8/18/00	[Signature]
6	LM-JD-250 & 252 CHGD 250A-D	8/18/00	[Signature]

UNITED STATES DEPARTMENT OF THE INTERIOR BONNEVILLE POWER ADMINISTRATION HEADQUARTERS, PORTLAND, OREGON			
LOWER MONUMENTAL-JOHN DAY NO 1			
500 KV TRANSMISSION LINE			
MILE 49 FROM LOWER MONUMENTAL			
Drawn	Checked	Approved	Date
J.T.A.	[Signature]	[Signature]	7/28/00
J.P.S.	[Signature]	[Signature]	8/18/00
E.H.M.	[Signature]	[Signature]	8/18/00
SIGHT OF WAY		DESIGN	
129649		103-11	