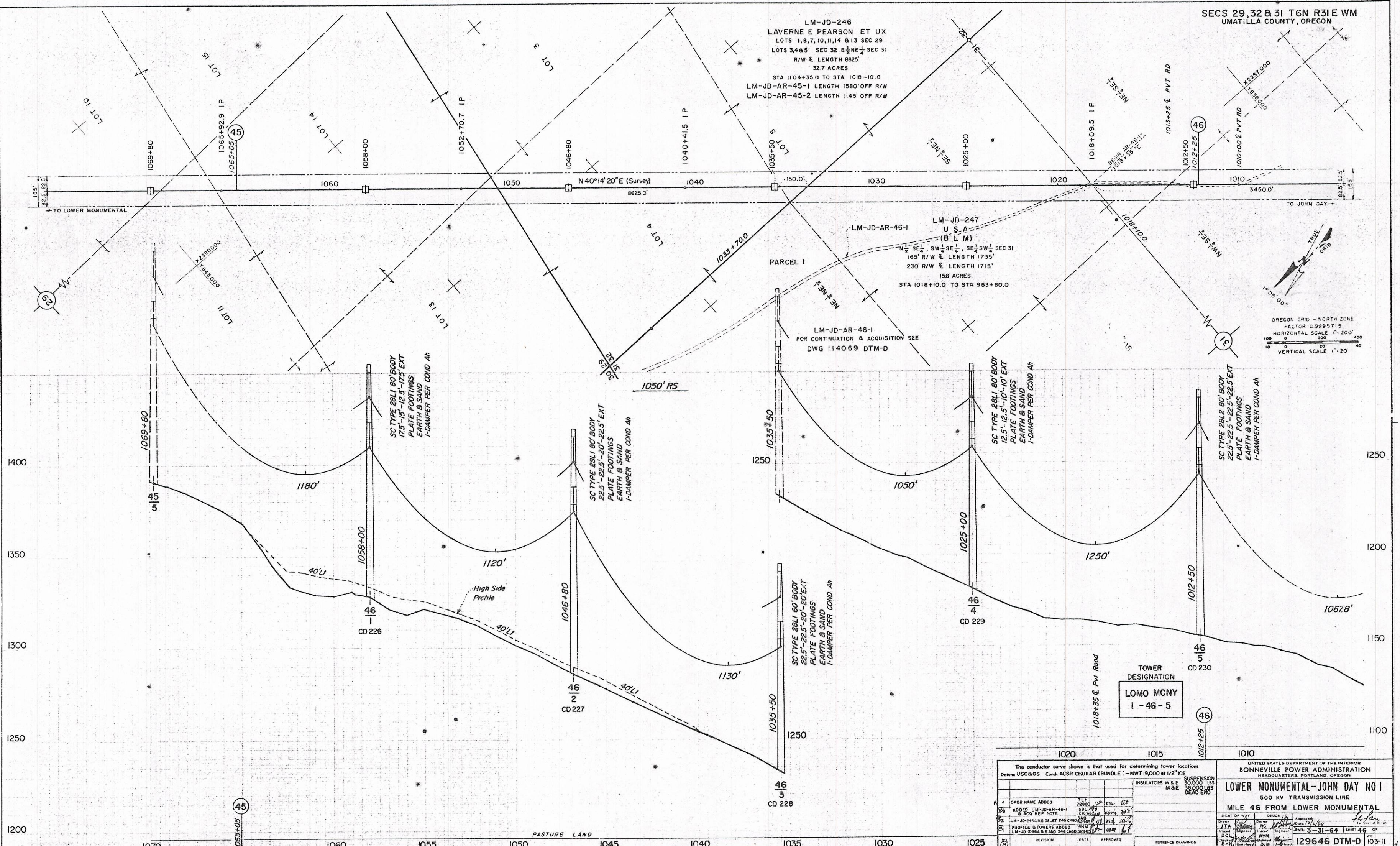
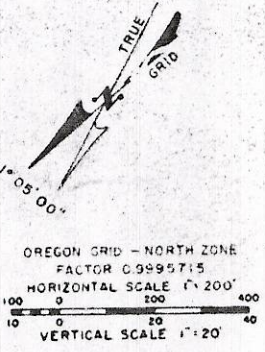


LM-JD-246
LAVERNE E PEARSON ET UX
LOTS 1, 8, 7, 10, 11, 14 & 13 SEC 29
LOTS 3, 4 & 5 SEC 32 E 1/2 NE 1/4 SEC 31
R/W & LENGTH 8625'
32.7 ACRES
STA 1104+35.0 TO STA 1018+10.0
LM-JD-AR-45-1 LENGTH 1580' OFF R/W
LM-JD-AR-45-2 LENGTH 1145' OFF R/W

LM-JD-247
U.S.A.
(B.L.M.)
1/2 SE 1/4, SW 1/4 SE 1/4, SE 1/4 SW 1/4 SEC 31
165' R/W & LENGTH 1735'
230' R/W & LENGTH 1715'
158 ACRES
STA 1018+10.0 TO STA 983+60.0



The conductor curve shown is that used for determining tower locations Datum: USCGS Cont: ACSR CHUKAR (BUNDLE) - MWT 19,000 at 1/2" ICE		INSULATORS M & E 30,000 LBS M & E 36,000 LBS DEAD END	
4 OPER NAME ADDED	YLN	DATE	APPROVED
ADDED LM-JD-AR-46-1 & ACQ REF NOTE	TSB	12/16/64	WJM
LM-JD-246A,B DELET 246 CHG 247	WHM	12/16/64	WJM
PROFILE & TOWERS ADDED	WHM	12/16/64	WJM
LM-JD-246A & B ADD 246 CHG 247	WHM	12/16/64	WJM

UNITED STATES DEPARTMENT OF THE INTERIOR
BONNEVILLE POWER ADMINISTRATION
HEADQUARTERS, PORTLAND, OREGON

LOWER MONUMENTAL-JOHN DAY NO 1
500 KV TRANSMISSION LINE
MILE 46 FROM LOWER MONUMENTAL

DATE: 3-31-64 SHEET 46 OF 48
129646 DTM-D 103-11