

UMATILLA ELEC COOP ASS'N  
CONTRACT NO 59664  
15 KV TRANSMISSION LINE  
STA 289+44  
LAND USE 89042  
7.2/12.5 KV PWR LINE  
OPF STA 274+45 TO OPF STA 283+40

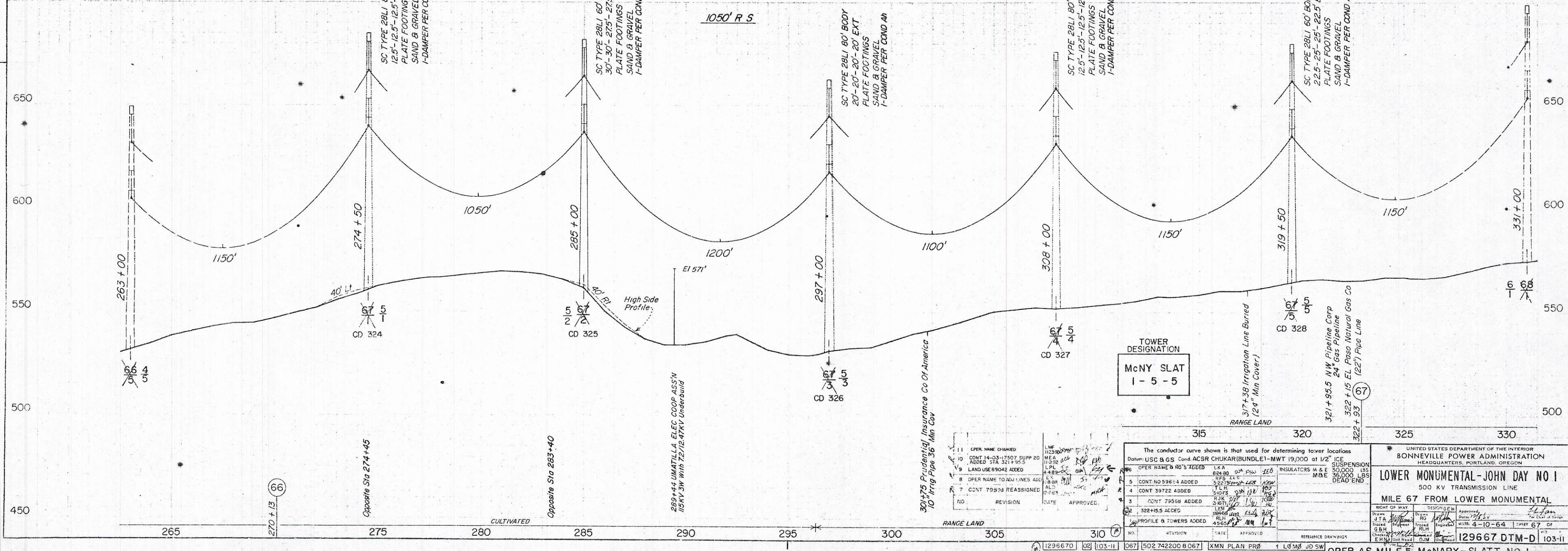
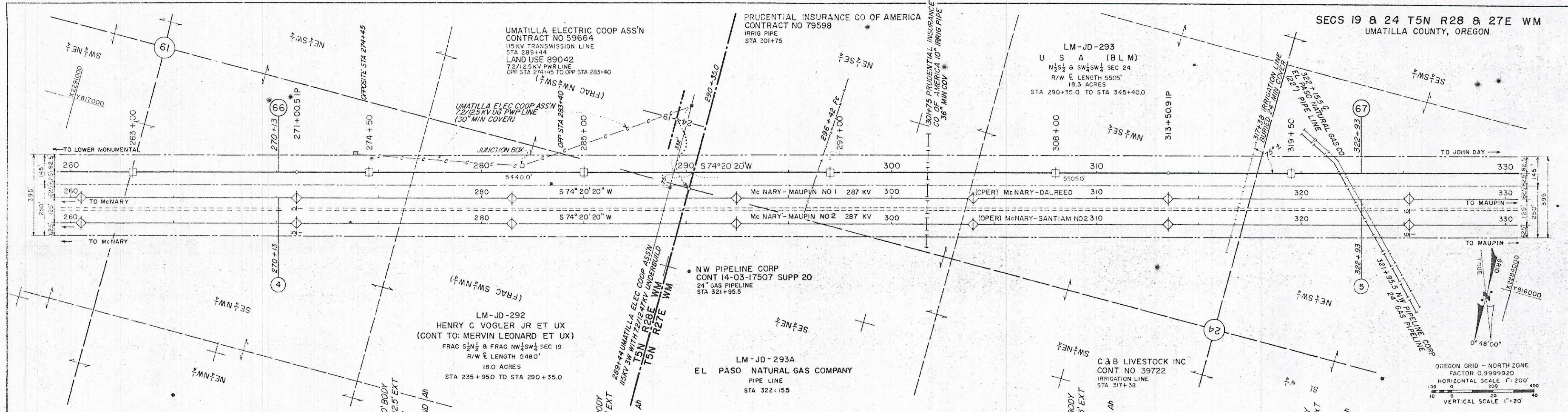
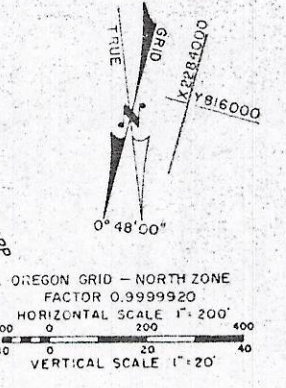
PRUDENTIAL INSURANCE CO OF AMERICA  
CONTRACT NO 79598  
IRRIG PIPE  
STA 301+75

LM-JD-293  
U S A (BLM)  
N 1/2 S 1/4 & SW 1/4 SEC 24  
R/W & LENGTH 5505'  
18.3 ACRES  
STA 290+35.0 TO STA 345+40.0

LM-JD-292  
HENRY C VOGLER JR ET UX  
(CONT TO: MERVIN LEONARD ET UX)  
FRAC S 1/2 N 1/2 & FRAC NW 1/4 SW 1/4 SEC 19  
R/W & LENGTH 5480'  
18.0 ACRES  
STA 235+95.0 TO STA 290+35.0

LM-JD-293A  
EL PASO NATURAL GAS COMPANY  
PIPE LINE  
STA 322+15.5

C & B LIVESTOCK INC  
CONT NO 39722  
IRRIGATION LINE  
STA 317+38



NO	REVISION	DATE	APPROVED
1	OPER NAME CHANGED		
2	CONT 14-03-17507 SUPP 20 ADDED STA 321+95.5		
3	LAND USE 89042 ADDED		
4	OPER NAME TO ADD LINES AND		
5	CONT 79598 REASSIGNED		

NO	REVISION	DATE	APPROVED
1	OPER NAME & NO'S ADDED		
2	CONT NO 59664 ADDED		
3	CONT 39722 ADDED		
4	CONT 79598 ADDED		
5	PROFILE & TOWERS ADDED		

UNITED STATES DEPARTMENT OF THE INTERIOR  
BONNEVILLE POWER ADMINISTRATION  
HEADQUARTERS, PORTLAND, OREGON

**LOWER MONUMENTAL-JOHN DAY NO 1**  
500 KV TRANSMISSION LINE  
MILE 67 FROM LOWER MONUMENTAL

DATE: 4-10-64  
SHEET 67 OF 73  
129667 DTM-D 103-11