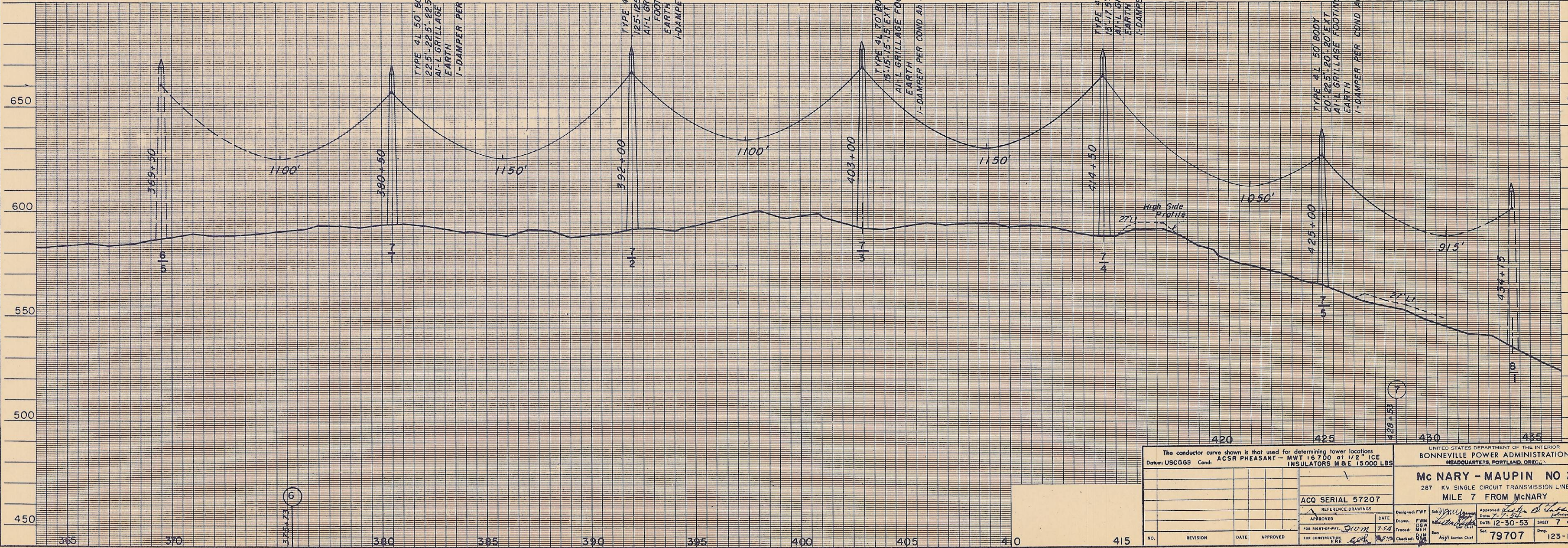
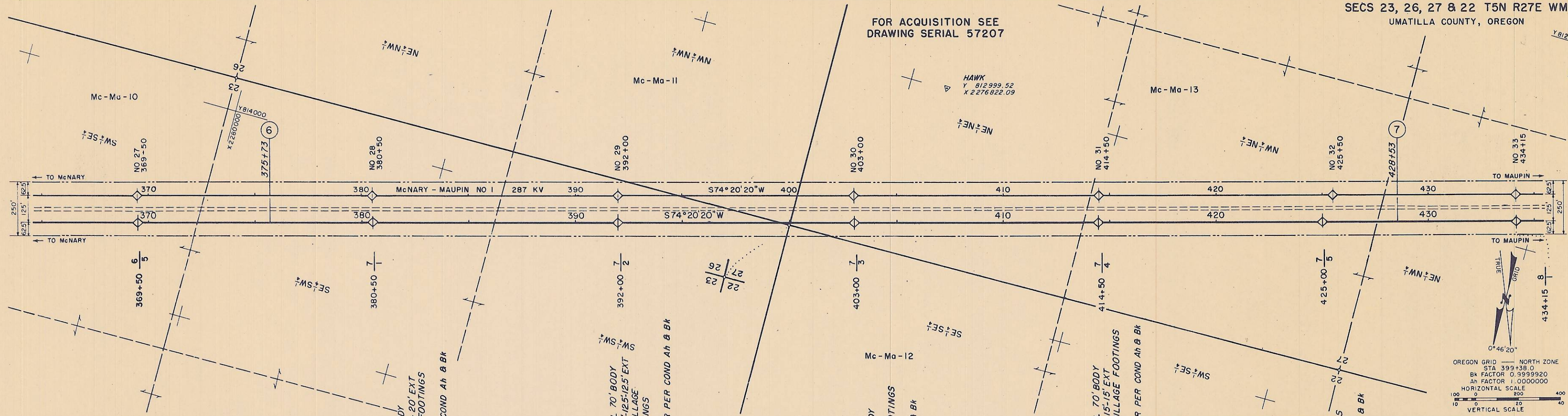


FOR ACQUISITION SEE
DRAWING SERIAL 57207



The conductor curve shown is that used for determining tower locations. Datum: USCGS Cont. ACSR PHEASANT - MWI 16700 at 1/2" ICE INSULATORS MBE 15000 LBS		UNITED STATES DEPARTMENT OF THE INTERIOR BONNEVILLE POWER ADMINISTRATION HEADQUARTERS, PORTLAND, OREGON	
Mc NARY - MAUPIN NO 2 287 KV SINGLE CIRCUIT TRANSMISSION LINE MILE 7 FROM McNARY		ACQ SERIAL 57207	
APPROVED: _____ DATE: _____	DESIGNED: FWF DATE: _____	DRAWN: FWM DATE: 7-30-53	CHECKED: _____ DATE: _____
FOR CONSTRUCTION: _____ DATE: _____		SHEET 7 OF 105 79707 123-13-D	