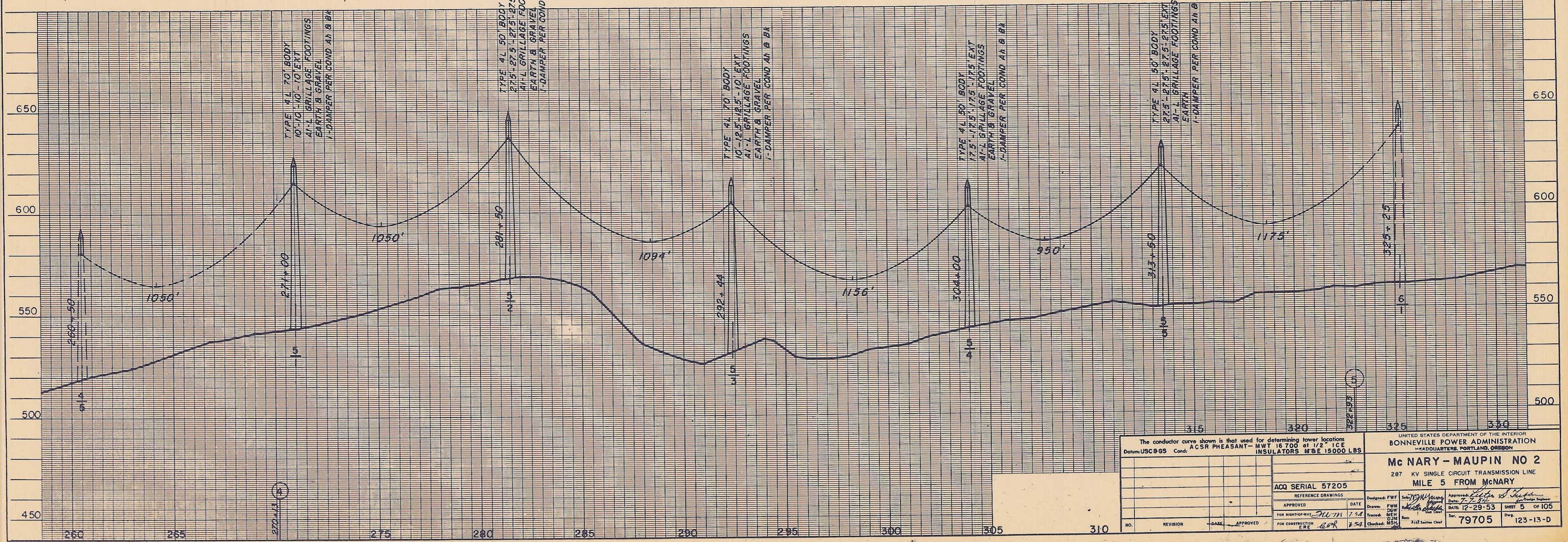
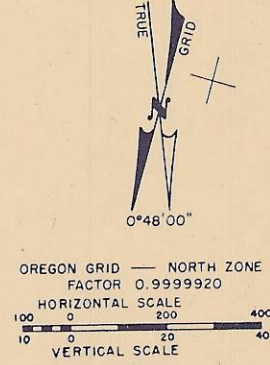
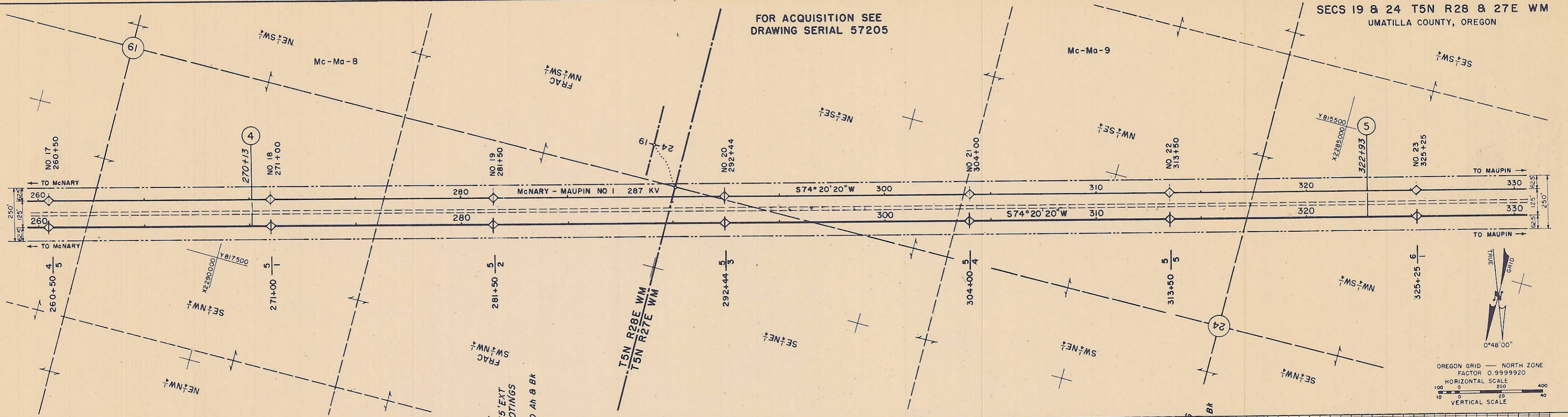


FOR ACQUISITION SEE
DRAWING SERIAL 57205

SECS 19 & 24 T5N R28 & 27E WM
UMATILLA COUNTY, OREGON



<p>The conductor curve shown is that used for determining tower locations Datum: USC 85 Cond: ACSR PHEASANT-MWT 16 700 at 1/2" ICE INSULATORS MBE 15000 LBS</p>		<p>UNITED STATES DEPARTMENT OF THE INTERIOR BONNEVILLE POWER ADMINISTRATION HEADQUARTERS, PORTLAND, OREGON</p>	
<p>ACQ SERIAL 57205</p>		<p>Mc NARY - MAUPIN NO 2 287 KV SINGLE CIRCUIT TRANSMISSION LINE MILE 5 FROM McNARY</p>	
<p>APPROVED</p>	<p>DATE</p>	<p>DESIGNED: F.W.F.</p>	<p>DATE: 7-7-53</p>
<p>FOR RIGHT-OF-WAY: M.W.M.</p>	<p>7-58</p>	<p>DRAWN: D.W.M.</p>	<p>DATE: 12-29-53</p>
<p>FOR CONSTRUCTION: E.R.</p>	<p>8-54</p>	<p>CHECKED: M.S.H.</p>	<p>DATE: 123-13-D</p>