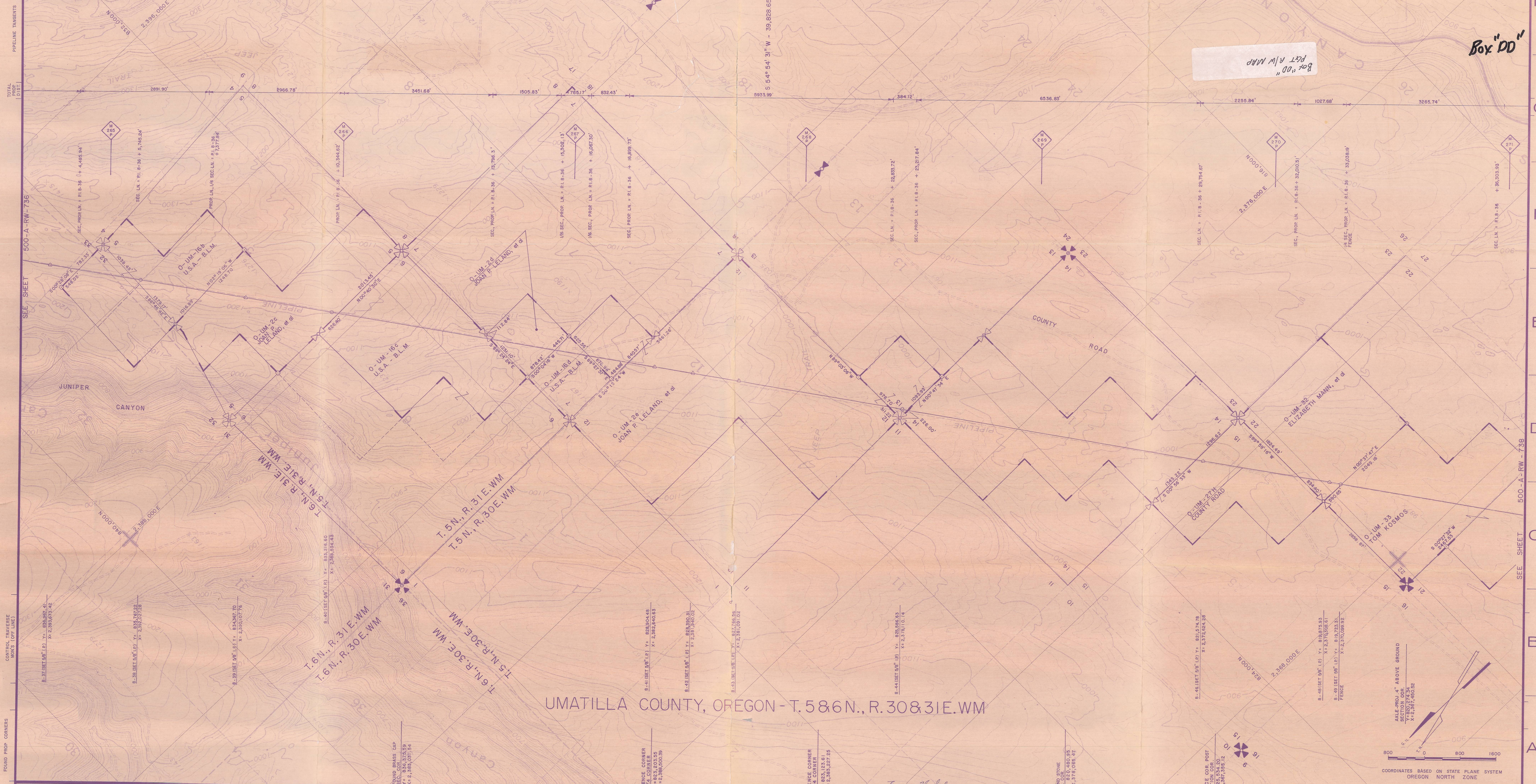


14 13 12 11 10 9 8 7 6 5 4 3 2 1

Box "DD"

Box "DD" R/W MAP



UMATILLA COUNTY, OREGON - T. 58 & 6 N., R. 30 & 31 E. WM

GENERAL NOTES

- STATIONS AND DISTANCES SHOWN ARE GROUND UNLESS OTHERWISE NOTED.
- BEARINGS SHOWN ARE GEODETIC UNLESS OTHERWISE NOTED.
- REFER TO P&T AS-BUILT SHEETS # B-AL-147 & 148
- REFER TO COMPUTATIONS BOOK # 5
- REFER TO SURVEY BOOK # 802 PAGES # 11 - 15 2 - 5
- OWNERSHIP SHOWN AS PER 1974 TITLE SEARCH

LOCATION
8-36 TO 8-50

CORR. FACTOR
0.9999161

AZ. CORR.
+ 01° 06' 10"

GRID DISTANCE = GROUND DISTANCE x CORR. FACTOR

LEGEND

- Recovered Section Corner
- Computed Section Corner
- Recovered/Computed 1/4 Cor.
- Pipeline P.I.
- Pipeline P.O.T.
- Recovered Land Corner
- Computed Land Corner
- Control Traverse Angle Point
- Control Traverse P.O.T.
- Pipeline Valve

SURVEY & MAPS BY
E. H. SCHMIDT CORPORATION
CIVIL ENGINEERS
TULSA, OKLAHOMA

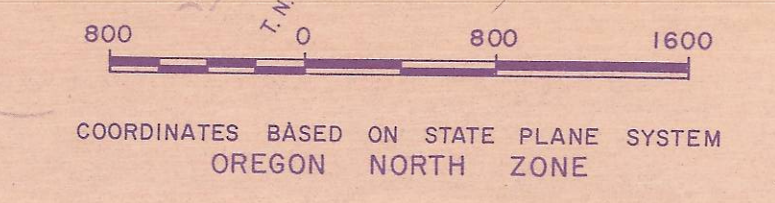
IDAHO NON-RESIDENT PERMITS
CALIF. LS 3513 OR
WASH. LS 12313
WASH. LS 12313
OREG. PE 6301

NO.	DATE	DESCRIPTION	W.O.	DR.	CH.	APPROVALS
2	DEC 77	FINAL SURVEY ISSUE	2888	HO		
1	MAY 77	GENERAL REVISION	2888	KW		
0	AUG 76	SURVEY RECORD ISSUE	7379	EHS		

36" PIPELINE R.O.W. & LAND SURVEY
MP 265.0 TO MP 271.0
TWS 586 N RANGE 30831E WM
UMATILLA COUNTY, OREGON
PACIFIC GAS TRANSMISSION COMPANY
SAN FRANCISCO, CALIFORNIA

SCALE: AS SHOWN
BILL OF MATERIAL

SUPERSEDES SHEET 65 OF 123 SHEETS
DRAWING NUMBER 500-A-RW-737 CHANGE 2



5NR30