

PROJECT NO. R 6005
LOCALITY
UMATILLA COUNTY
PENDLETON - JOHN DAY HIGHWAY
SCALE: 1" = 100'
DRG. NO. 10B-4-26
LOCALITY
UMATILLA COUNTY
PENDLETON - JOHN DAY HIGHWAY
SCALE: 1" = 100'
DRG. NO. 10B-4-26
PROJECT NO. R 6005
LOCALITY
UMATILLA COUNTY
PENDLETON - JOHN DAY HIGHWAY

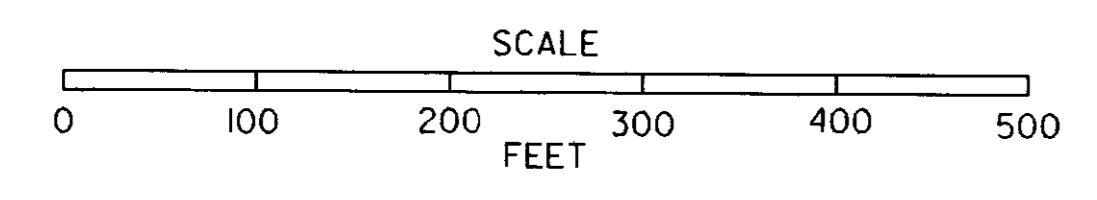
OREGON DEPARTMENT OF TRANSPORTATION
Located Line
**UKIAH - FIVE MILE CREEK
(MATERIAL SOURCE 30-30-5) SEC.**
PENDLETON - JOHN DAY HIGHWAY
UMATILLA COUNTY
Scale: 1 inch = 100 feet
MARCH, 1993

BEARINGS: Oregon Coordinate System of 1983, north zone.
COORDINATES: This drawing utilizes a Local Datum Plane (LDP) which is relative to the Oregon Coordinate System of 1983, north zone, with respect to the local latitude and ground elevation. The LDP coordinates define true ground distances. To convert the LDP coordinates to the Oregon Coordinate System of 1983, north zone, multiply the LDP coordinates by 0.999727849 and by the metric conversion factor of 0.3048.

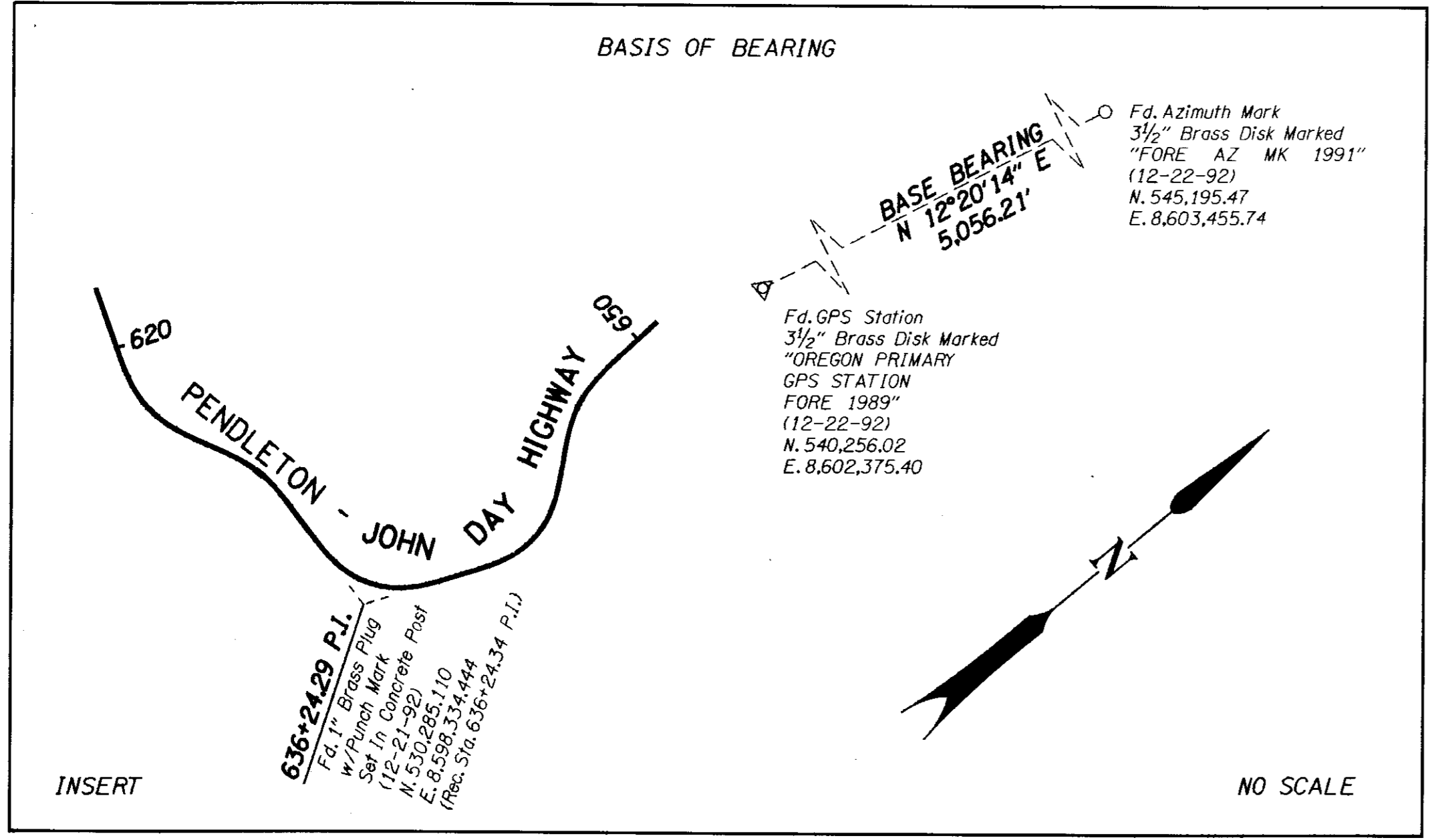
FIELD NOTES: This drawing shows the results of an Oregon Department of Transportation (ODOT) surveys. The field survey notes, book numbers 3145 & 3198, are available from ODOT files in Salem, Oregon.

NOTE: Topography (creek & pavement) location digitized from Drg. No. 6B-33-22, Dated June, 1949.

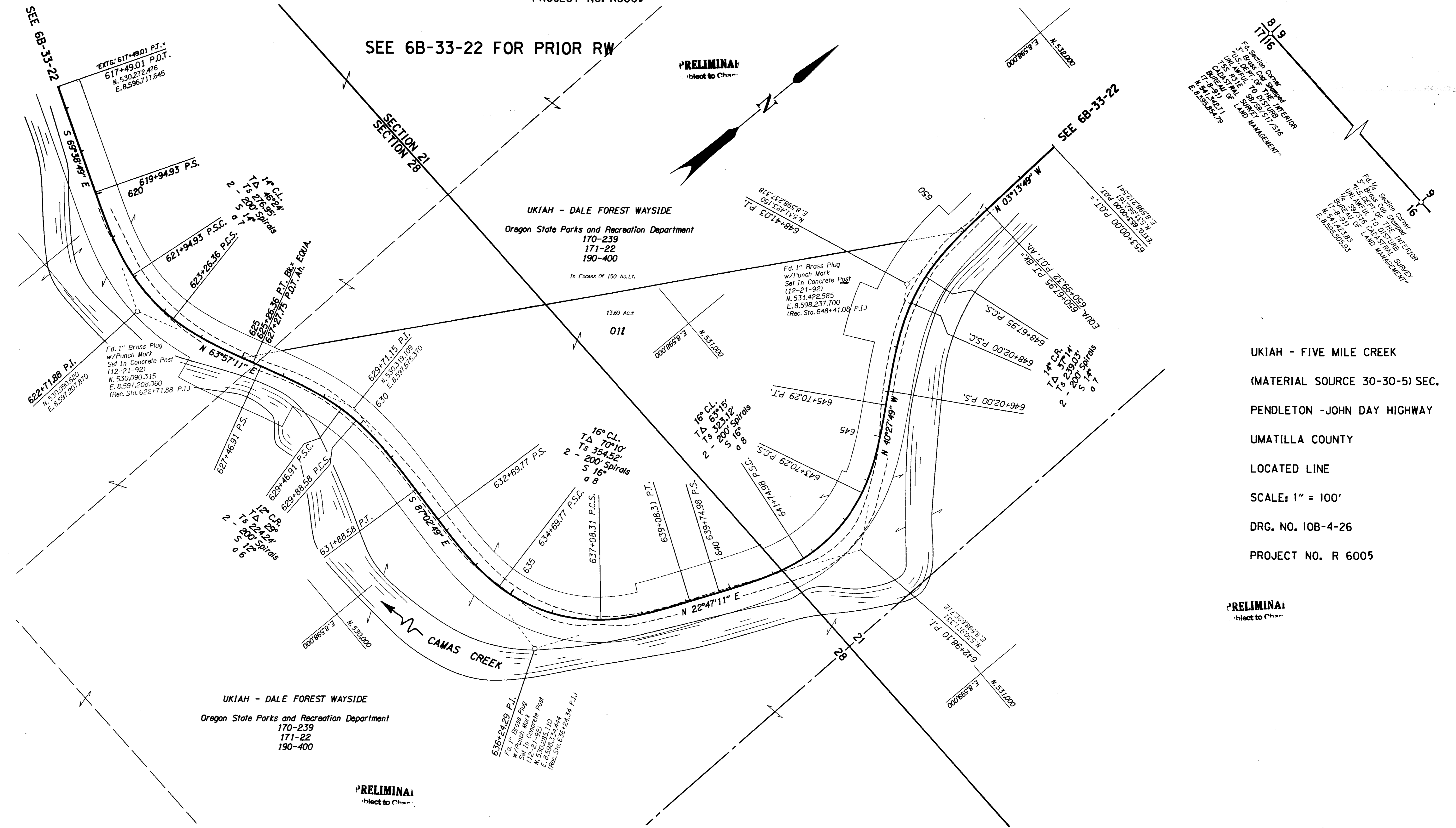
PROJECT NO. R 6005
DRG. NO. 10B-4-26



/usr/rw/projects/06182/06182rw 12-MAR-1993 MSS



T. 5 S., R. 31 E., W.M.
DRG. NO. 10B-4-26
PROJECT NO. R6005



UKIAH - FIVE MILE CREEK
(MATERIAL SOURCE 30-30-5) SEC.
PENDLETON - JOHN DAY HIGHWAY
UMATILLA COUNTY
LOCATED LINE
SCALE: 1" = 100'
DRG. NO. 10B-4-26
PROJECT NO. R 6005

PRELIMINARY
Subject to Change

PRELIMINARY
Subject to Change

PROJECT NO. R 6005
LOCALITY
UMATILLA COUNTY
PENDLETON - JOHN DAY HIGHWAY
SCALE: 1" = 100'
DRG. NO. 10B-4-26
PROJECT NO. R 6005
LOCALITY
UMATILLA COUNTY
PENDLETON - JOHN DAY HIGHWAY