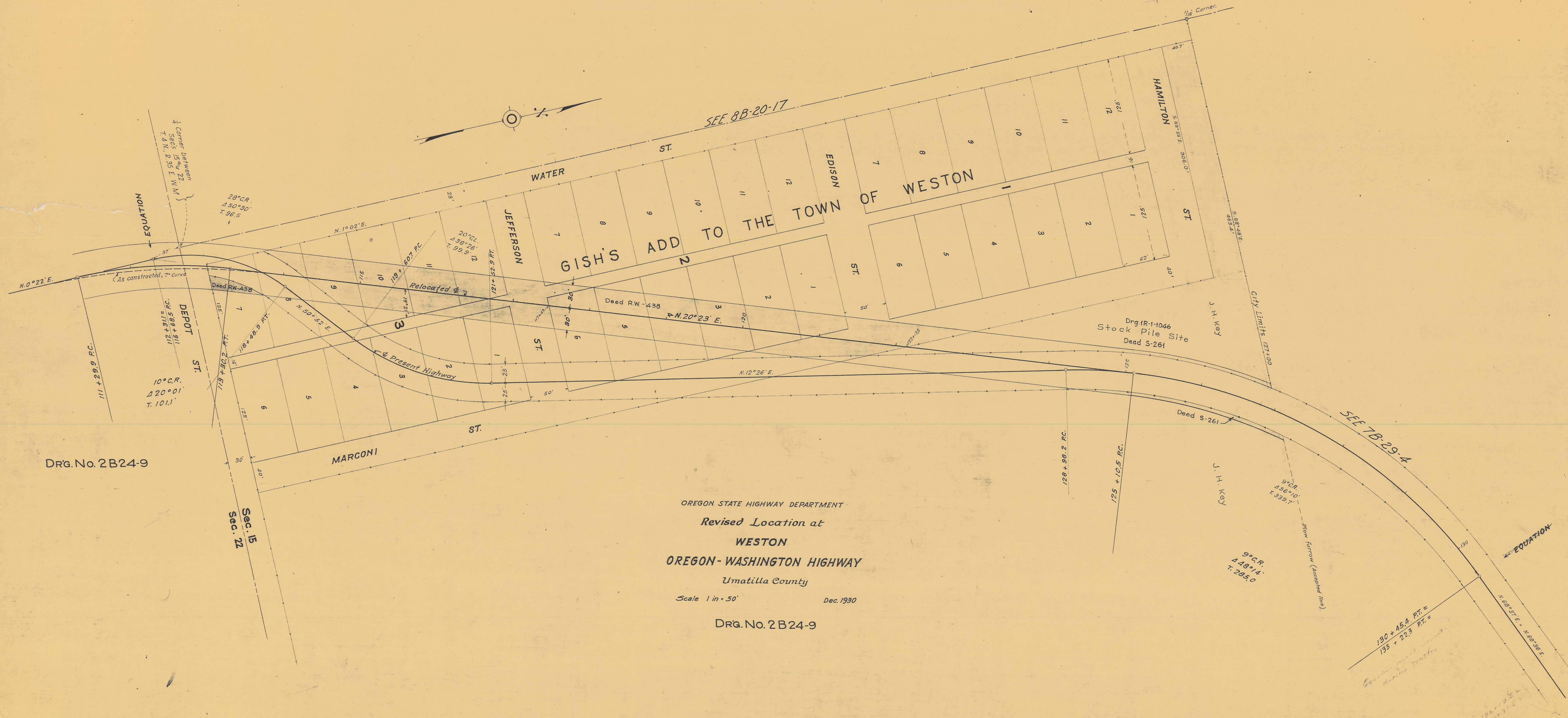


SBSA-9

Revised Location of Weston - Dr. Mosby Plan

Revised Location of Weston - Dr. Mosby Plan



DRG. No. 2B24-9

Sec. 15  
Sec. 22

OREGON STATE HIGHWAY DEPARTMENT  
 Revised Location at  
**WESTON**  
 OREGON-WASHINGTON HIGHWAY  
 Umatilla County  
 Scale 1 in = 50' Dec. 1930  
 DRG. No. 2B24-9

190 + 45.4 PT. =  
 135 + 22.3 PT. =

136 + 13.5 =  
 140 + 11.5 =

SBSA-9