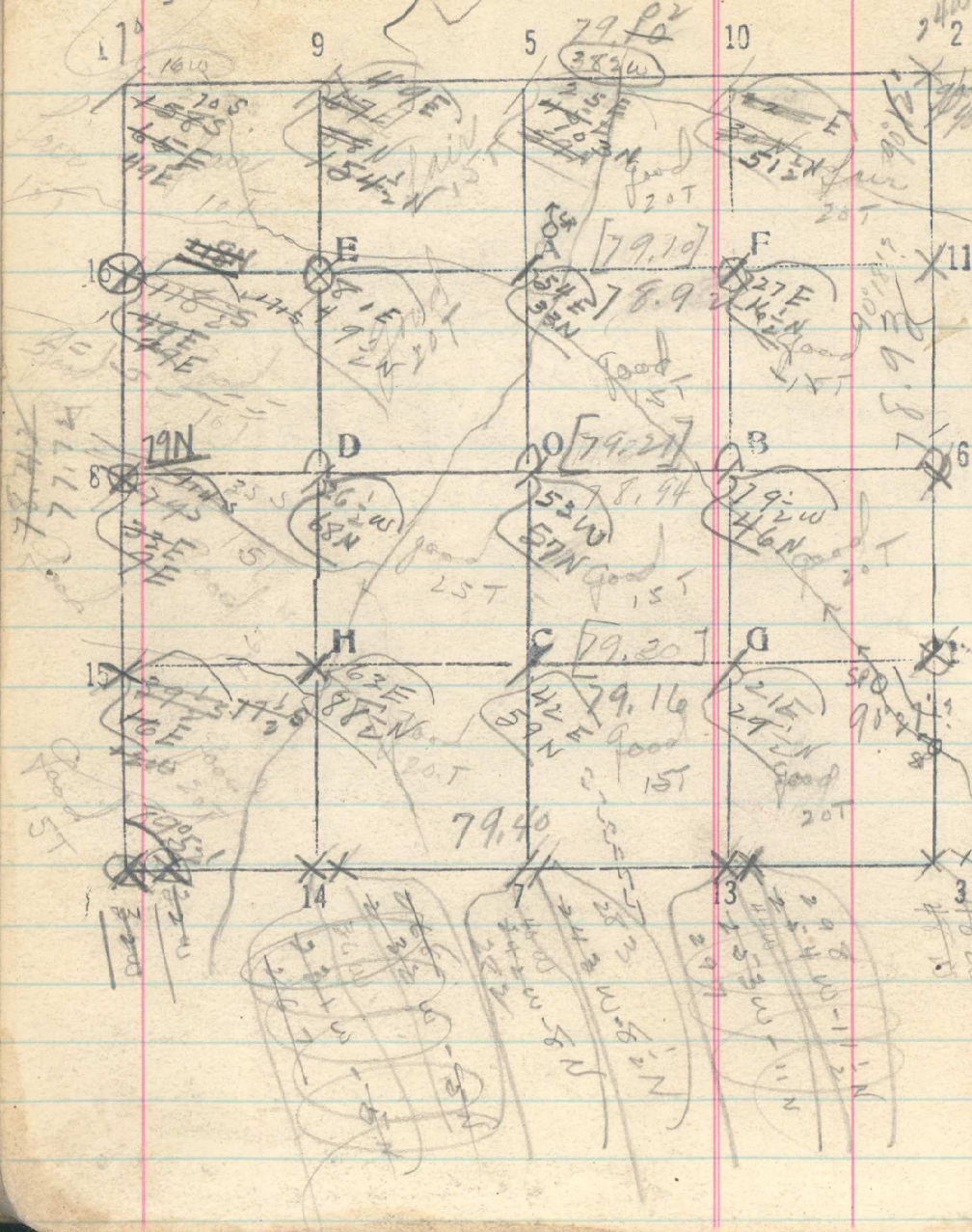


29
 Sec. 34 T. 2N R. 35E



Line 4 - 1
 8/18 North between 33 + 34 547
 Set 20 - 40 - 60 (No Sign of 1/4 cor.)
 Ravine 8 - 2.70 E. / 25 - 5.70 E. / 42 - 5.60 E.
 67 - 5.40 East / 92 S 30 E
 80. No sign of sec cor. Set temp stake.
 continue line between 27 + 28
 Set 98 - 119 - 128
 Ravine 125 7 E / 128 - E / 144 S 70 E
 156.84
 158.64 Sec. Cor. 21-22-21-28 bears E 130 lbs.
 8/16-19 June 2-1 West between 26 + 34
 Set 20 - 40 - 60
 32 Squaw Creek - N / 72 Runway S E
 79.16 temp. loc. line found, bears N 27.6 lbs
 79.72 loc. cor. 27-28-33-34 bears N 118 lbs.
 206
 8/21 June 12-15 West thru south half.
 Set 20 - 40 - 60
 8 Ravine N 30 W. / 59 Squaw Creek N
 79.16 5 1/2 cor. 15 bears N 118 lbs
 8/22-23 Line 11-16 West thru North half.
 Set 20 - 40 - 60
 35 Squaw Creek - S / 42 Ravine N 70 E
 78.92 1/6 Cor. 16 bears N 66 lbs.
 8/25 June 8-6 East thru center. Set 20 - 40 - 60
 30 Squaw Creek - N 20 E. / 55 5/8 cor. - NW.
 78.94 1/4 Cor 6 bears N 25 lbs.