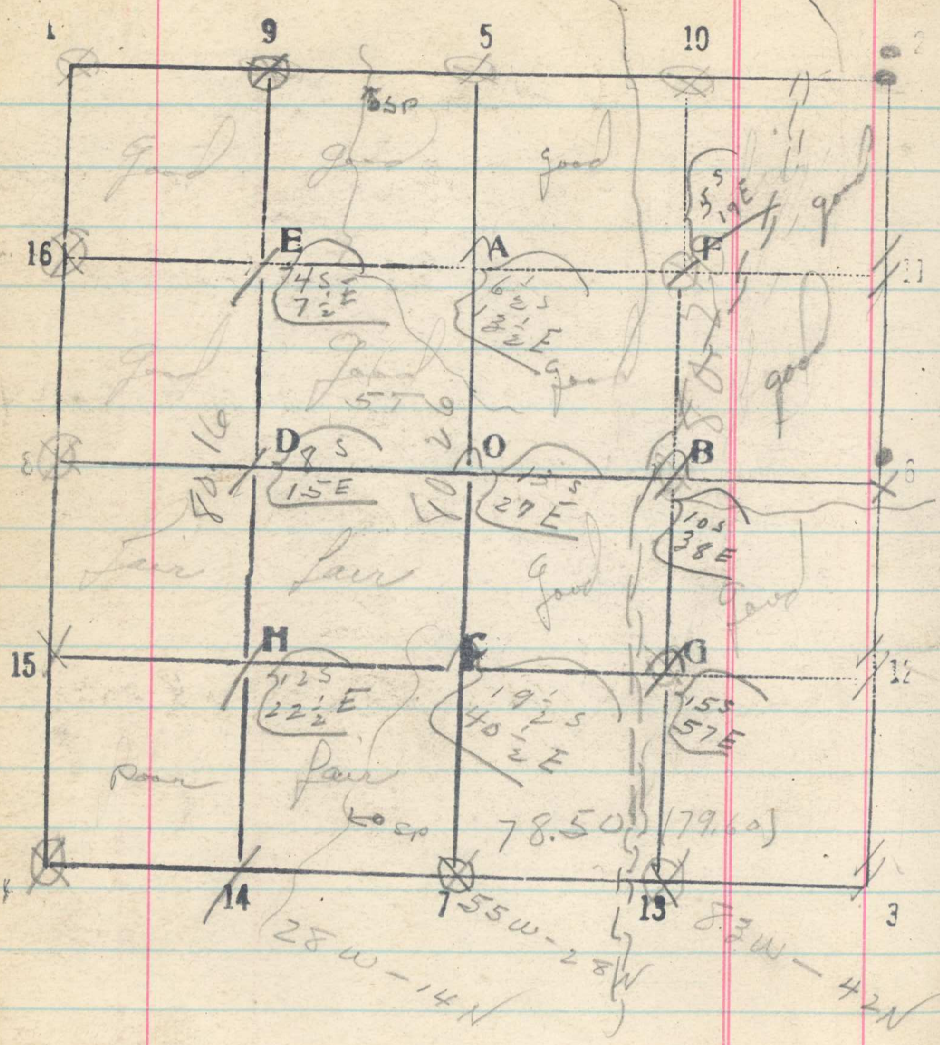


Sec. 12 T. 2N R. 35E



535

7/1 line 9-14 South then West half
 Set 20 - 40 - 60 (80.16 cor. bears E. 30 1/2 k)

80.30 temp 1/16 cor bears E 57 k

line 9-14 Sec. 13 Continue line South
 then West half Sec. 13

Set 100 - 120 - 140 (80.20 cor. bears E 60 k)

160.42 temp 1/16 cor bears E 98 k

7/14 line 5-7 South then center

Set 20 - 40 - 60

80.26 1/4 cor. bears E 54 k

7/21 line 10-13 South then East half

Set 20 - 40 - 60

80.20 1/16 cor 13 bears E 76 k