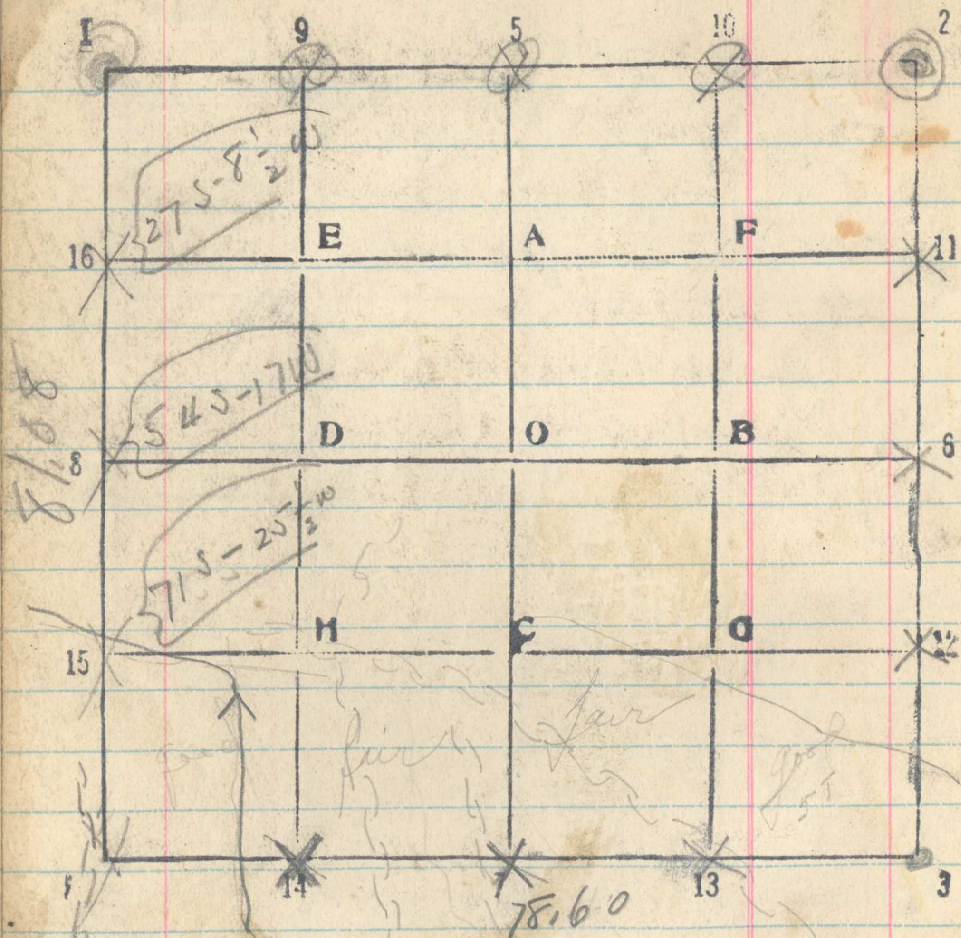


Sec. 38 15 T. 2N R. 25E



514

6/17 line 3-4 West between 22+15

From b S. on 1/4 sec bet. 14+15. Run S. 89° 34' W

Set 20-40-60 p. 4

5th Stop of ridge to 5 Stage fault by chain
78.26 Top Sec. cor 15-16-21-22 from North
Bears North 166 lbs

80.20 Set Top Sec. Cor. Thence N 89° 39' W

Set 100.20

118.06 1/4 cor 16-21 Mars N 84 lbs