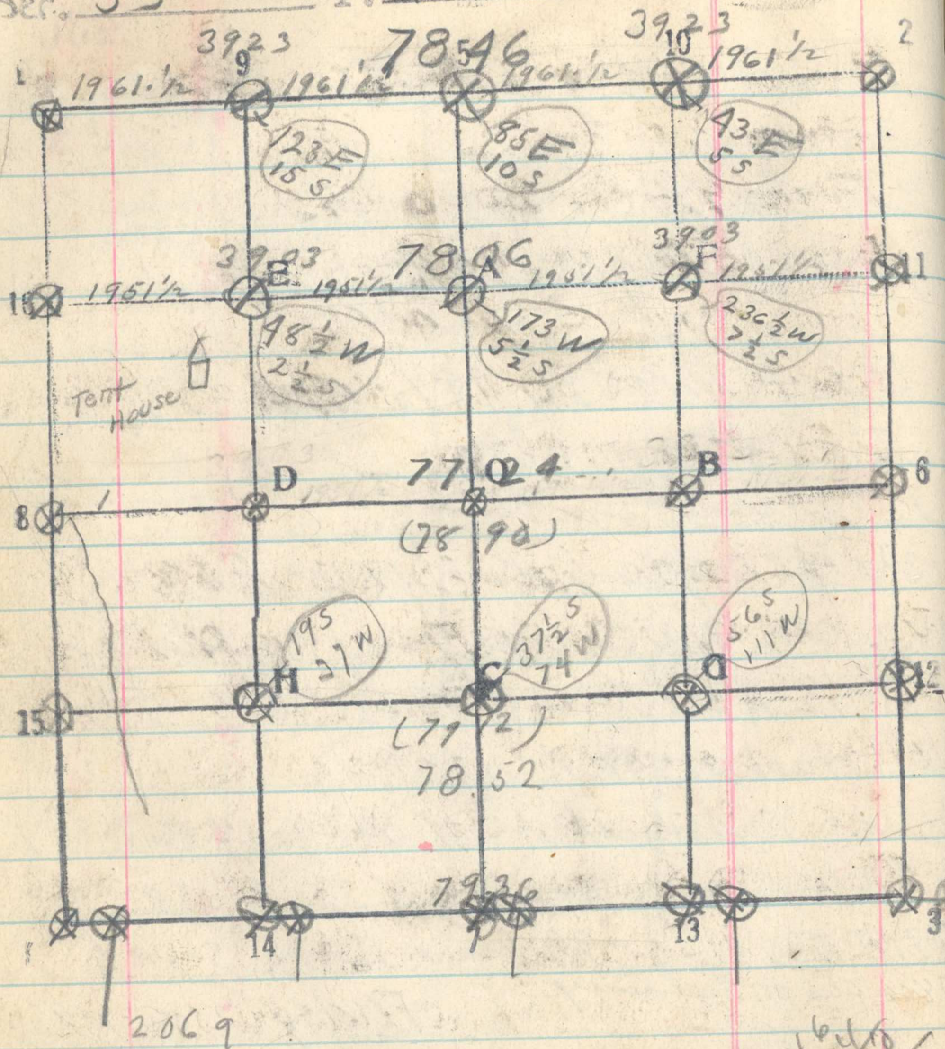


Sec. 33

T. 2 N

R. 35 E



1951
1715
1515
1215
915
615
315
15
90

7936
7724
2/15 660
7830

7846
27
19
65

Friday Nov 7th 1917

437

Rechaine the North Bdy of sec 33

From 1. to 9 = 1838 Chs

From 9 to 5 = 2000 Chs

From 5 to 10 = 2004 Chs

From 10 to 2 = 2004 Chs

78.46 Chs or 8 lks different than first chaining

Rechaine Through N 1/2 of sec 33

From 11 to F = 1716 Chs From F to A = 2015 Chs

From A to E = 2076 From E to 16 = 20.00 Chs

7806 Through N 1/2 of sec 33

a difference of 96 links

East through South 1/2 sec 33

650 Chs Ravine sheds S 20° E

7852 Chs cor 12 bears 75 lks South

Rechaining line D-6 58.98

D-8 19.32
78.20