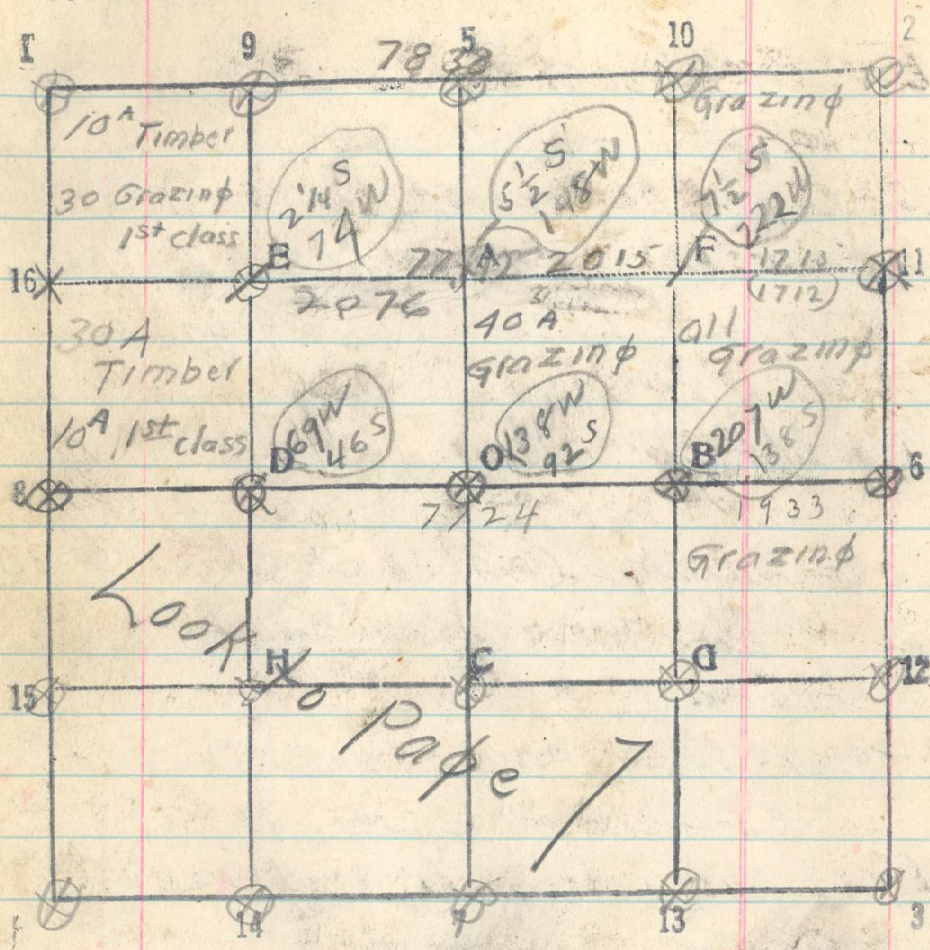


Sec. 33

T. 2 N R. 35 E



Rechained line 11-16

11 to F 1715. F to A 2015

from A to E 2076 217

11 to 16 7806

2908

Thursday Oct 30 '6

430

East Through Center Sec 33.

20-40-60

77.24 chs  $\frac{1}{4}$  Cor bet sects 33 + 34  
bears 189115 South

East Through N  $\frac{1}{2}$  Sec 33

Through timber

12 chs leave timber

13  $\frac{1}{2}$  chs Telephone line N 15° E + S 10° W

1560 chs NW corner wire fence enclosing  
 $\frac{1}{2}$  Acre bears 20 lbs South

22 start steep descent

37 chs Ravine sheds N 60° E for 2 chs then N 80° E

55 chs Cross same Ravine Sheds N 80° E

7712 chs 11-5-33 bears 11 lbs South

7806 chs on Reclaiming

Friday Nov 7<sup>th</sup>

West bet Sects 28 + 33

20-40-60

7838 chs Cor 1 bears 20 lbs South

7846 on Reclaiming