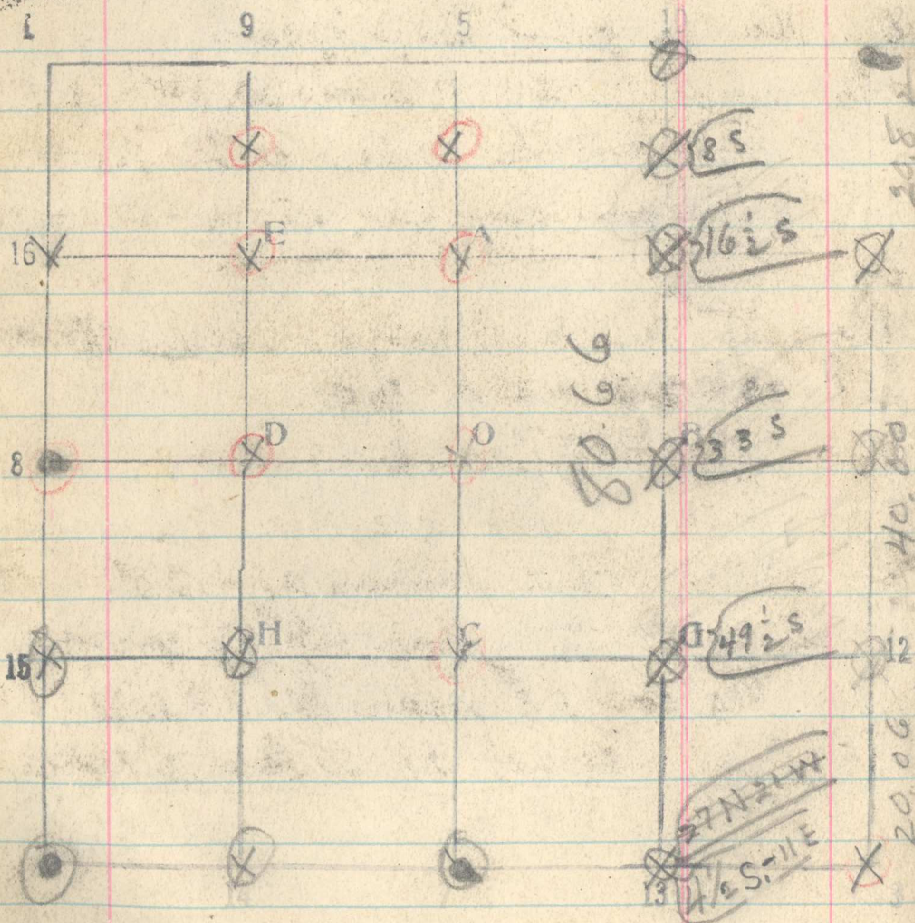


12

Sec. 21 T. 2 N. R. 34 E



3/28

488

Return between 21 & 22 line 3-2

Set 20-40-60.

20.06 temp  $\frac{1}{16}$  cor 12 bears W. 144 lbs.

40 no sign of temp  $\frac{1}{4}$  cor

60.06 temp  $\frac{1}{16}$  cor 11 bears W. 147 lbs.

55 Creek 10 lbs wide. skid. north-south.

80.88 Section corner 15-16-21-22

$\frac{3}{28}$  on line

Return thru East half of line 10-13

Set 10-20-40-60.

80.66  $\frac{1}{16}$  cor 13 on line

$\frac{4}{3}$  Return East between 21 & 28

line 7-3. from old  $\frac{1}{4}$  cor

19.83  $\frac{1}{16}$  cor 13 bears N. 18 lbs

40.78 Temp. Cor. 21-22 - 27-28 bears N 10 lbs