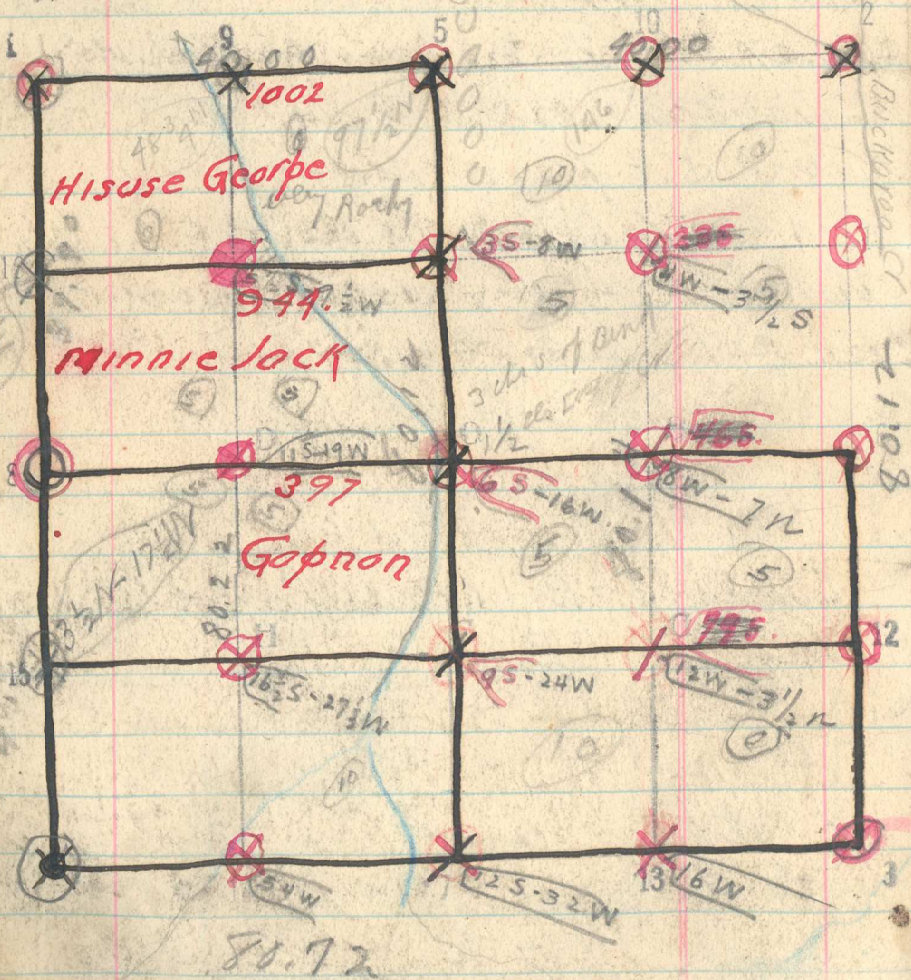


South thru east hill 9-14  
 85 creek rocks wide. 2/3 N 30 W.  
 20 Sit traps 1/2 cor 2 on steep side hill  
 40 Sit traps 1/2 cor 2 - outer 1 bear patch  
 60 Sit traps 1/2 cor on top of ridge  
 75 Creek 10 hrs N 30 E  
 822 The cor 14 hours W 30 E. 34  
 Sec. 24 T. R.



Saturday May 24

484

East to 800 13-24

Descent steep slope

1600 Chs creek sheds 11

2000 set on steep slide rock shelf

40 at 460 47 1/2 ch ridge

8000 on 2 bears 195 lbs 12

South through Ch Sec 24

2000 Chs cor 4 on steep rocky mountain

4000 set O in bottom 3 ch small fork creek

6000

73 Chs breakfast

8000 Chs what left to bed

South thru east hill of 24 June 10-15

Set 30 - 40 - 60

65 Road N 10 W - 5 1/2 hrs

80 Sit traps 1/2 cor 13

West between 24 & 25 June 3-4  
 up steep rocky hill for 20 Chs.

2000 traps 1/2 cor 13 near 14 lbs

20 Road N 5 S

40 24 traps 1/2 cor 7 hours N 2 1/2 hrs

42 Creek 10 hrs North

60 Sit traps 1/2 cor 14 - 63 Chs N 10 W 30 E