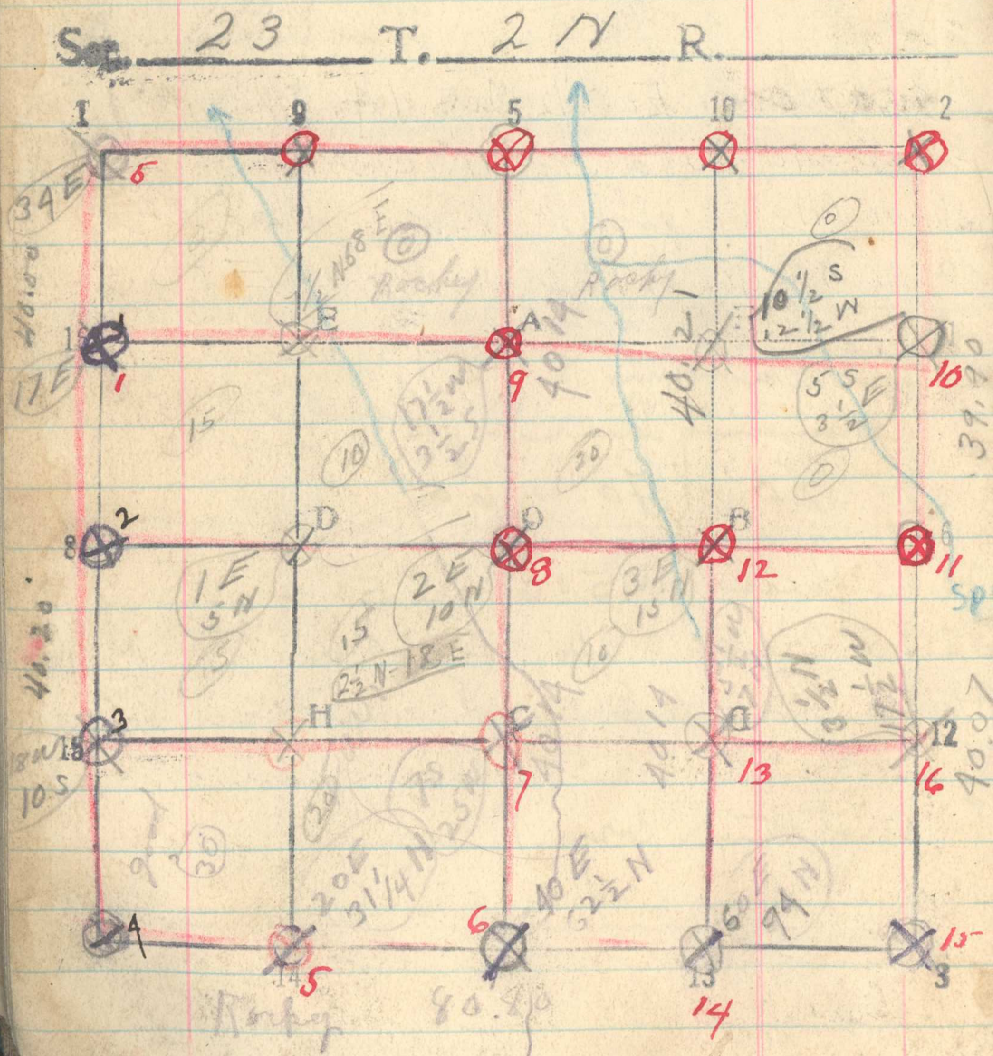


With three east half, June 14-9
 7 set 20-60.
 40.5 1/4 Cor. D bears E 36 lbs.
 80.10 1/6 Cor. 9 bears. East 100 lbs.



483

North bet sec 23 + 24

Line 36

2000

40.07 ch 1/4 cor bears 35 lbs W

South through C to sec 23

Line 5-7 20-40-60

40.14 ch 1/4 Cor. O bears 18 lbs W

Line 0-7 15 ch. Rains

20 set stake 40.14.7 bears 50 lbs W

80.80 ch cor 3 bears 12 5 N

Line 13-B North through SE 1/4

40.14 ch cor B bears 11 lbs

North between 22 + 23 June 8-1

Set 20

40 set tugs cor 1

40.91 old tugs. cor. 1 bears 34 lbs E.

Line 10 - B Set 20

40.21 1/6 cor B bears W 25 lbs