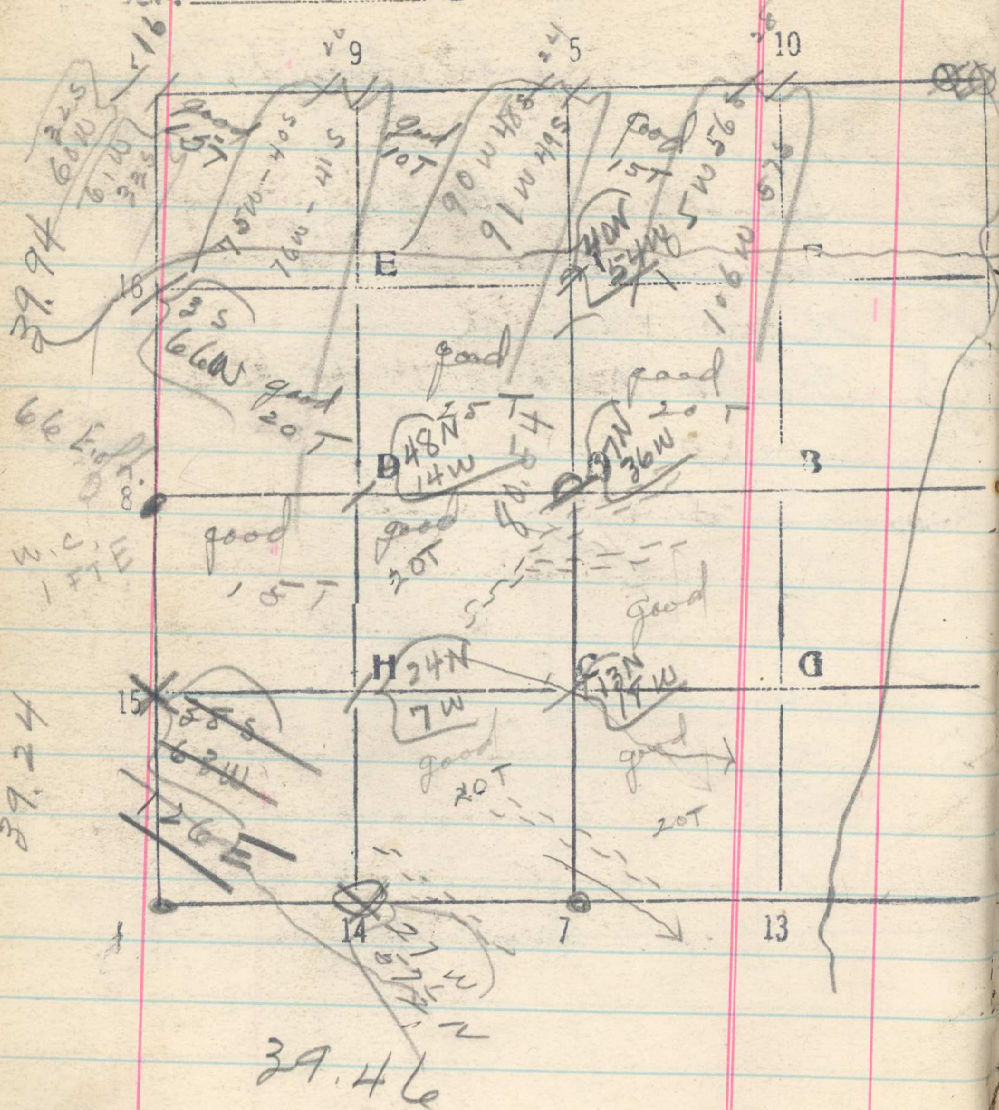


41
Sec. 4 T. 1 N R. 25 E



559

19/30 June 4-7 East between 4 & 9

Set 20

10 Ravine Sheds S60 E / 25 Ridge N60 W - 200
39.46 1/4 Cor. re-established from B.T.
bears. N 115 lks

10/30 June 7-5 North thru center
Set 20 - 40 -

Ravines 3 - 560 E / 20 - 560 E.

80.54 1/4 Cor 5 bears W. 72 lks

Line 14 - D North thru west half
Set 20 - 40

Line 8 - 0 East to center

19.46 Lump 1/16 Cor B from S. bears S 50 lks

39.04 Lump 1/4 Cor D. from 2 bears S 30 lks

38.64 1/4 Cor O. bears S 3 lks