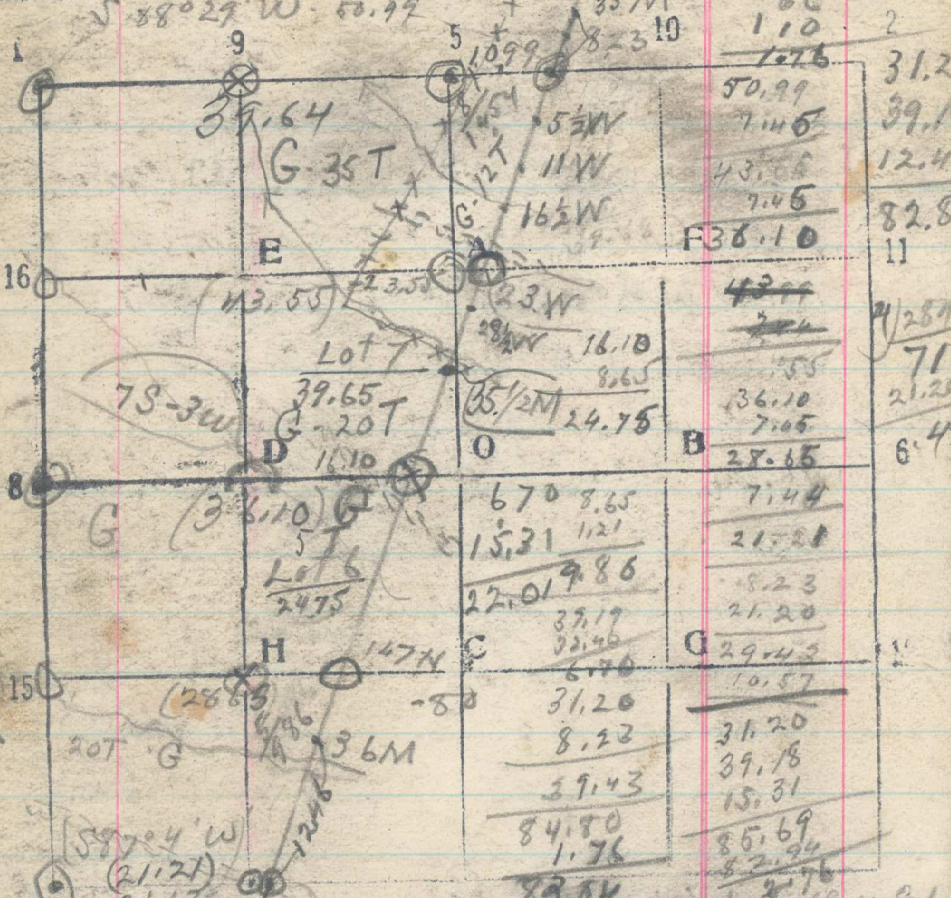


40 1054
 Sec. 28 T. 3 N R. 36 E 186



From C.C. of accs 21 & 28 run S 20° W.
 21.20 Set cc bet lots 7 & 8 Aug 24, 1919
 31.20 35 1/2 M cor. bears N 70° W 34 lks.
 From 35 1/2 M. cor. run S. 20° W, continuing
 11.20 Set C.C. bet lots 6 & 7
 32.40 Set cc bet lots 5 & 6 Aug 25, 1919

39.18 36 M cor bears N 70° W, 13 lks. 275

12.46 C.C. of accs 28 & 33 acc. to by no. on line
 15.31 C.C. of accs 21 & 28, a stone in W.S.
 bears N 70° W, 68 lks. In correct. Set cc
 Set cc for lots 7 & 8 - S. 33, 3.90 chs N 20° W of 36 1/2 M
 36 1/2 M cor. bears N 70° W, 30 lks. Aug 27, 1919
 N 87° 04' E by solar bet accs 28 & 33
 Set dump post for 14 - S. 28
 (42 lks. accs) Internet & by Rec. 12.46 chs S 20° W
 of 36 M. cor. Set dump post for C.C. bet accs
 28 & 33. Find old location 150 lks W + 24 lks S
 of this point on md. Stationing map. Put red cap on
 588° 29' W 50.99 - 1.35 S in underground
 this corner.
 Aug 25, 1919

Aug 30 From 16 - 3.28 run N 88° 29' W by solar
 1000 Set stake.
 39.18
 12.20 32.40
 1.42
 6.78
 12.46

From C.C. bet lots 6 & 7 run West
 16.10 Set 1/16 cor D - S. 28
 36.17 1/4 cor bet accs 28 & 29 bears S, 16 lks.
 19.24
 20.71
 1.47 W
 31.20
 11.20
 42.40
 41.42
 98