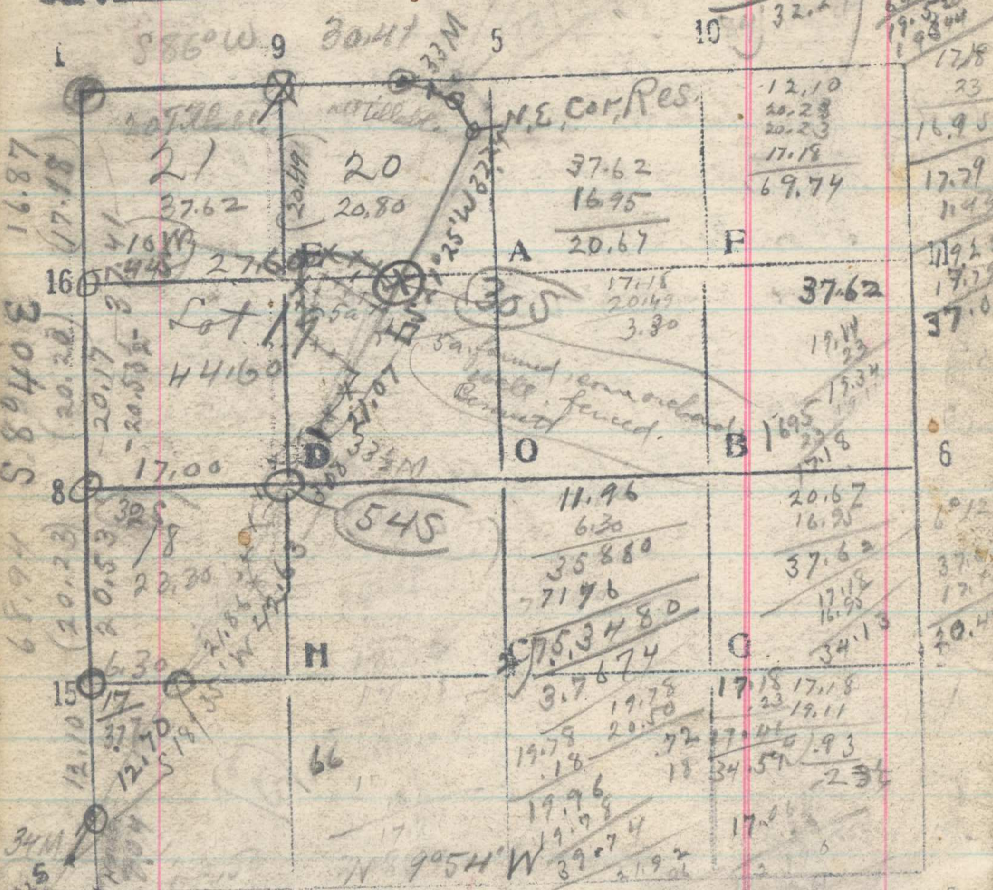


39 15 T. 3 N R. 36 E



Cops of old notes:
 From 33M corner S 69° E. 2.50 chs, S 36° E. 350 chs
 to source of Wild Horse Creek + N.E. cor. Res.
 Set Post. Fin 12 N 18 1/2° W 26 and N.E. cor. Res.
 For 10 S 80° E. 16 lbs.
 Thence S 20° W 4000 bear swamp, 34.00 bear
 timber into prairie, divide, + led. Set post for

Lat 40° 40' Pine 36 S 20° E 60 lbs.
 76.64 Found Morley's 3M cor 93 ch. w of line 274
 true course of line, S 20° 45' W, Set 274
 11x10x10, MS.
 Thence S 20° W on 35 thence 274
 3.25 C.C. of area 16x21 1957 274
 17.18 89.76 74.8
 2.39 9.724
 From C.C. of area 10x15 run Meander

	N	E	W
S 69 1/2° E 1.61 To 33M cor.	32.24	.56	1.51
	1.92		
S 69° E 2.50		.90	2.33
	16.25		
S 36° E 3.50		2.83	2.06
	14.91		
S 20° W 15.75 Set. C.C. lot 19+20	4.29	5.90	5.73
	15.05		
	23		5.47
	25.00		8.9
23.50 Set stake to get camp, Aug. 22, 1919	19.57		
	8.74		
33.74 + 6.00 = 39.74 chs instead of 40.00 chs.			
33 1/2 M. cor bear N. 70° W 80 lbs.			