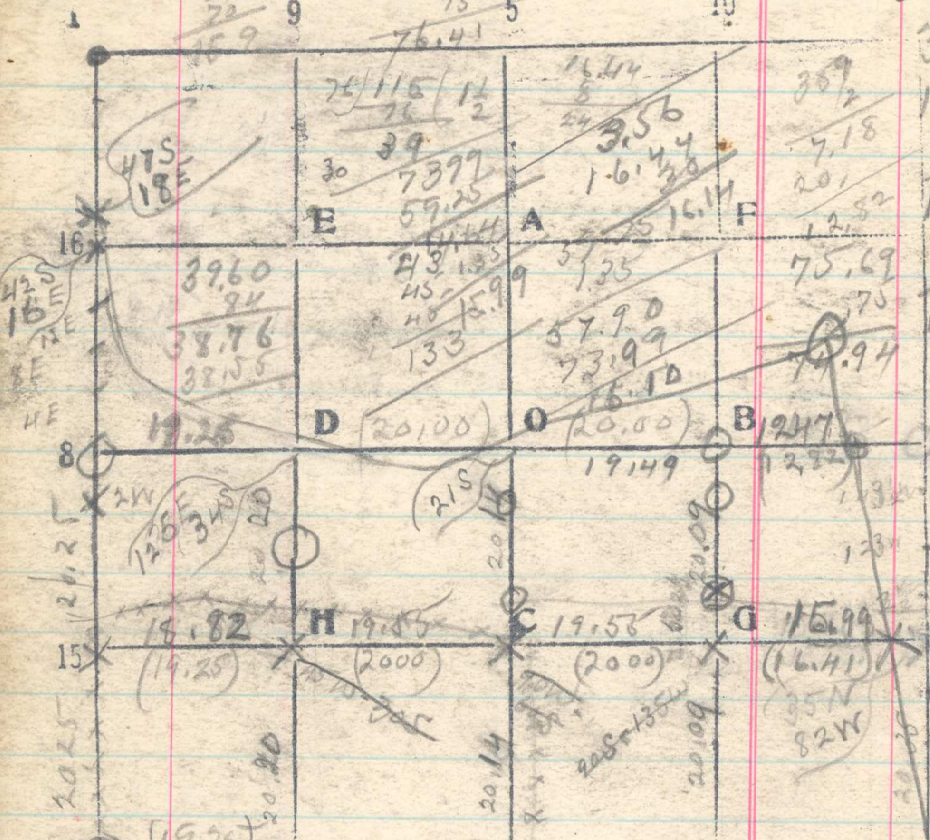


3 Sec. 18 T. 3 N R. 36 E 7.18



19.82 19.47 19.47 19.47
 From cov of secs. 13, 18, 19 & 24 nm N
 20 Set 1/16 cov under N & S fence
 40.50 1/4 cov bet 13 & 15 bears W. 12 lks
 A stone mkt 1/4
 Pine 30 N 29° E 22 mkt 1/4 S RT
 Pine 24 S 46° W 30 mkt 1/4 S RT

589.51 East from 15 - S. 18,
 19.25 Set 1/16 cov H-S. 18,
 238.48
 39.25 Set C - S. 18
 59.25 Set G - S. 18 - (230 lks S. of S fence)
 73.99 (should be 75.69 - (170 lks. dist) Cov. 12-S. 18
 (75.69) bears S. 115 lks.

From 1/4 cov bet 13 & 18 nm North by BS. on Sec Cov.
 20.
 42.50 Notation of M.C.
 39.39 Pine 30 mkt R. 35 S 12 RT. bears west 33 lks. blaze face E.
 39.16 Pt. for cov of 11, 7 & 12, bears East, 31 lks. Sept 27/19
 87.12 Pine at stake set 23.92 chs from west bears East 65 lks.
 Cov of secs. 17, 18 & 19. 20 identified by
 Lum Panabrium is at fence cov. E. W. N.
 From this pt. stump of fir, 20 m mkt
 B.T. bears S 40° W 76 lks. old bearing 51500
 Pine stump 24 bears N 88° W
 no marks. Old bearing N 80° W
 Thence N. 8° W by solar, ^{correct bearing} N 10° 21' W.

20, 35
 40.70 Pt. for 1/4 cov bet 17 & 18 bears S 82° W
 164 lks. I located this pt. from stump of Pine 18
 S. 30° E 7 lks mkt B.T. Pine 18 N 60° W. 8 mkt
 1/4 S. B.T. 2 cut into latter tree 6 m mkt
 Thence N 10° 21' W,
 N. back mkt Pine 18 S 60° W. 10 mkt
 95.7 Set stake for M.C.
 (2.90) Thence north
 Pine 30 N 30° E
 Pine 24 S 21° W