

Sec. 18

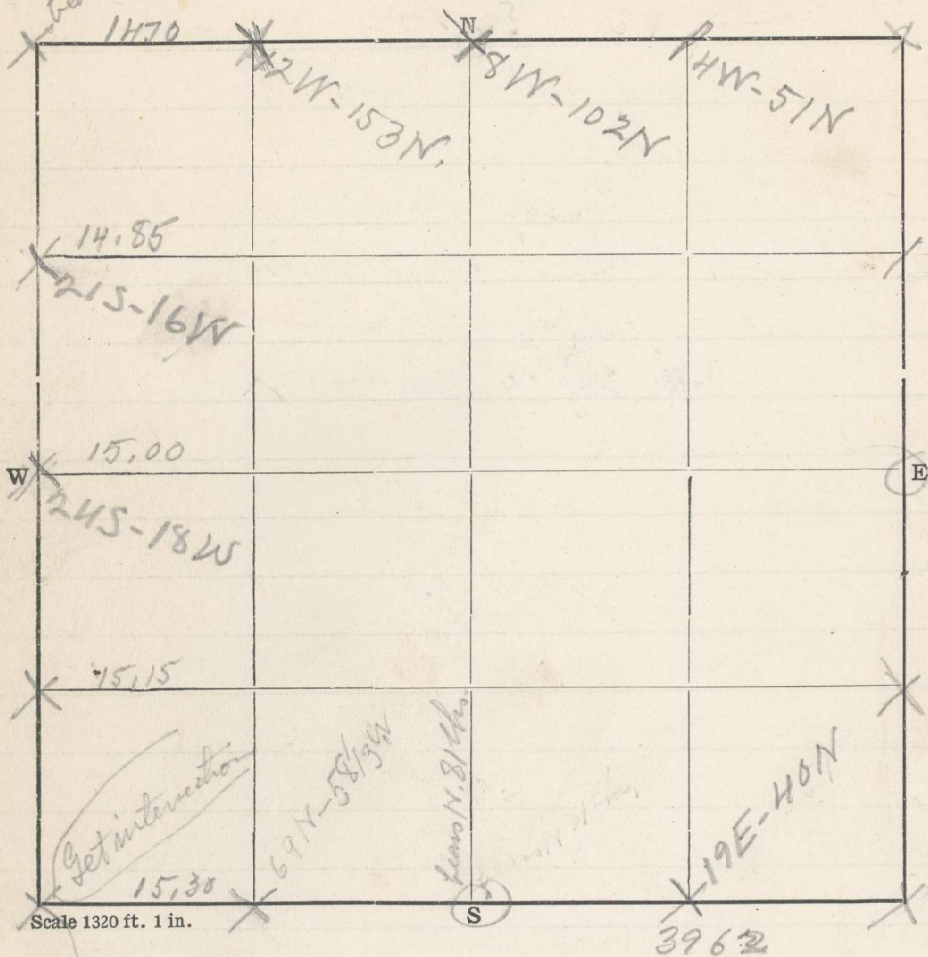
T. 2 N

R. 35 E

Examiner

Date

19



length 116 - slope 27° - true length 103

falling 125 lks - 13° - true falling 122 lks

beav sec 18+19
From cor to sec 12, 18, 19920 Run West

20.00 Set tem 1/6 cor 10 E of ravine bed 75
39.62, Probable 1/4 cor, no marked stone
beav N. 81 lks disk. Set stake in
old mound for 1/4 sec cor

From 1/4 cor bet sec 18+19 run West
20.00 Set tem 1/6 cor 9 on top of ledge on E
side of Buckaroo Canyon. aug 28
36.03
35.30 Set stake for end of line. tem 1/6 cor 15
Cor to sec 13, 18, 19924 beav N 122 lks

380