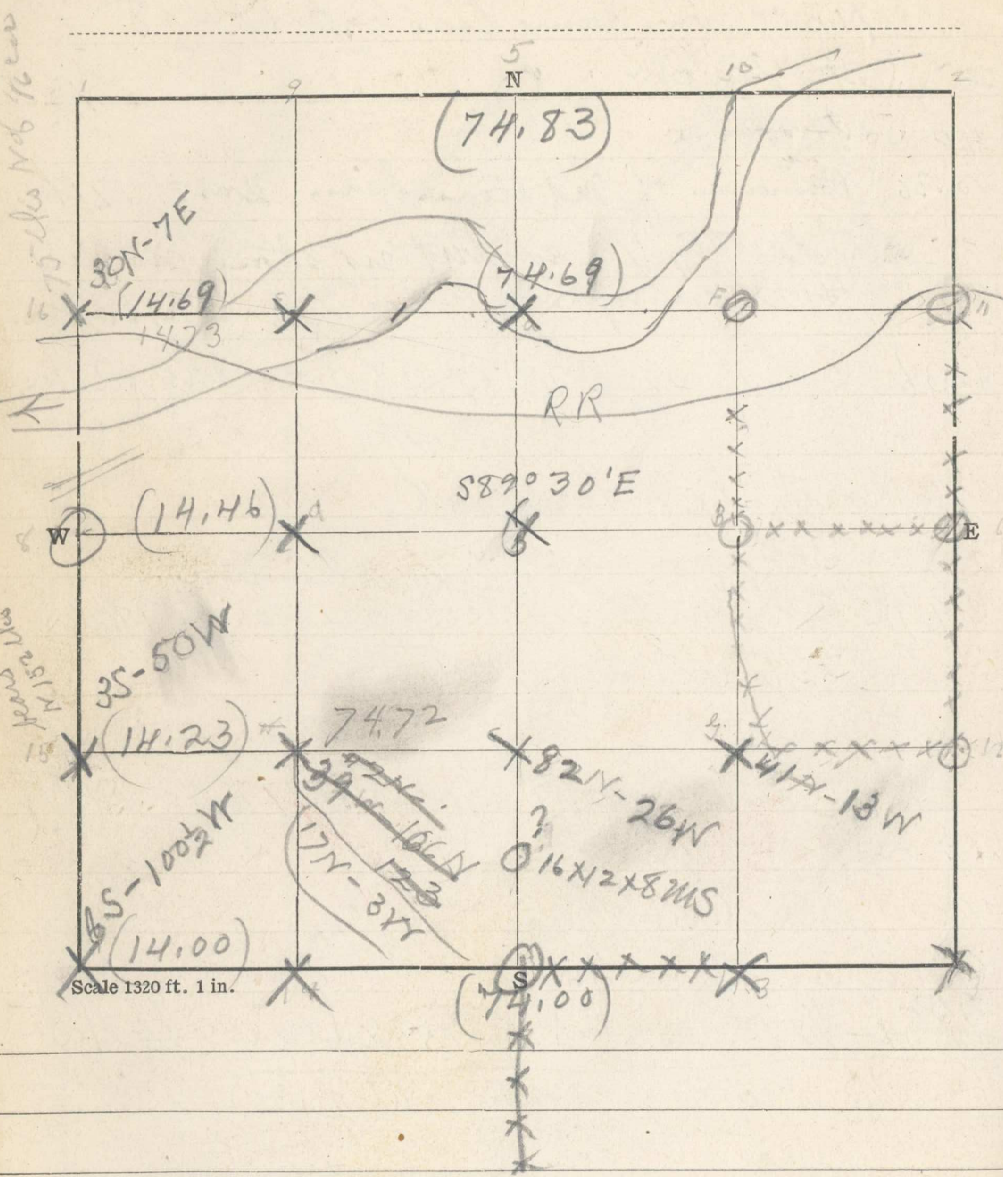


30 Sec. 6 T. 2 N R. 35 E

Examiner _____ Date _____ 19__



From 11 Sec 6 run West - July 30 1888

- 20. Set 1/16
- 27. River, SW.
- 40 On bar in river bed.
- 42.56 Across river, NW,
- 49.80 River bed, SW
- 50. Set stake + go to camp. - in River channel
- 60.00 Set tem 1/16 cor
- 65.00 SW edge of water - Unadilla River
- 74.75 1/16 cor bears S 75° E 60 fks dist.

From 1/4 sec cor bet 146 run S 89° 30' E.

- 14.46 Set tem 1/16 cor
- 19.46 House bears nearly N abt. 3 chs
- 24.46 - 5 ch ft in thicket on W slope of spur
- 29.46 - Set stake
- 39.46 Set tem 1/4 sec cor
- 53.98 - 1/16 cor bears S 142 fks
- 73.98 - 1/4 cor bet sec 5 & 6 bears E 23 fks

From 1/16 cor (12) run West.

- 20.00 Set tem 1/16 cor G
- 40.00 Set tem 1/16 cor C
- 60.00 Set tem 1/16 cor H
- 74.64 1/16 cor 10 bears N 152 fks