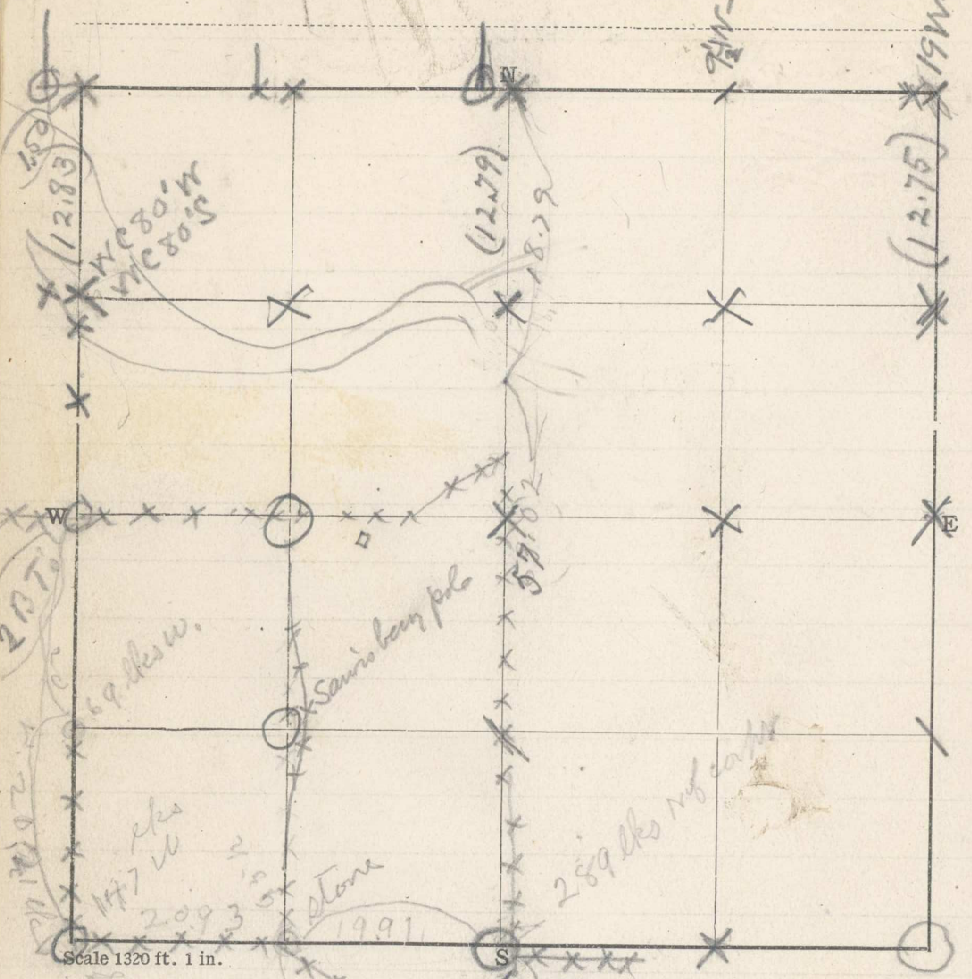


24 Sec. 4 T. 2N R. 35E.

Examiner _____ Date _____ 19____

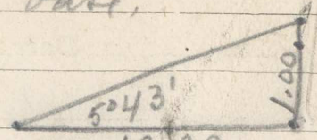


Scale 1320 ft. 1 in.

57.02
 18.79
 75.81
 72.79

 302

To triangulate - Nat. cot. angle opposite base multiplied by base.



365

Nat. Cot. $5^{\circ}43'$ = $\frac{10.00}{9.98985} = 10.$