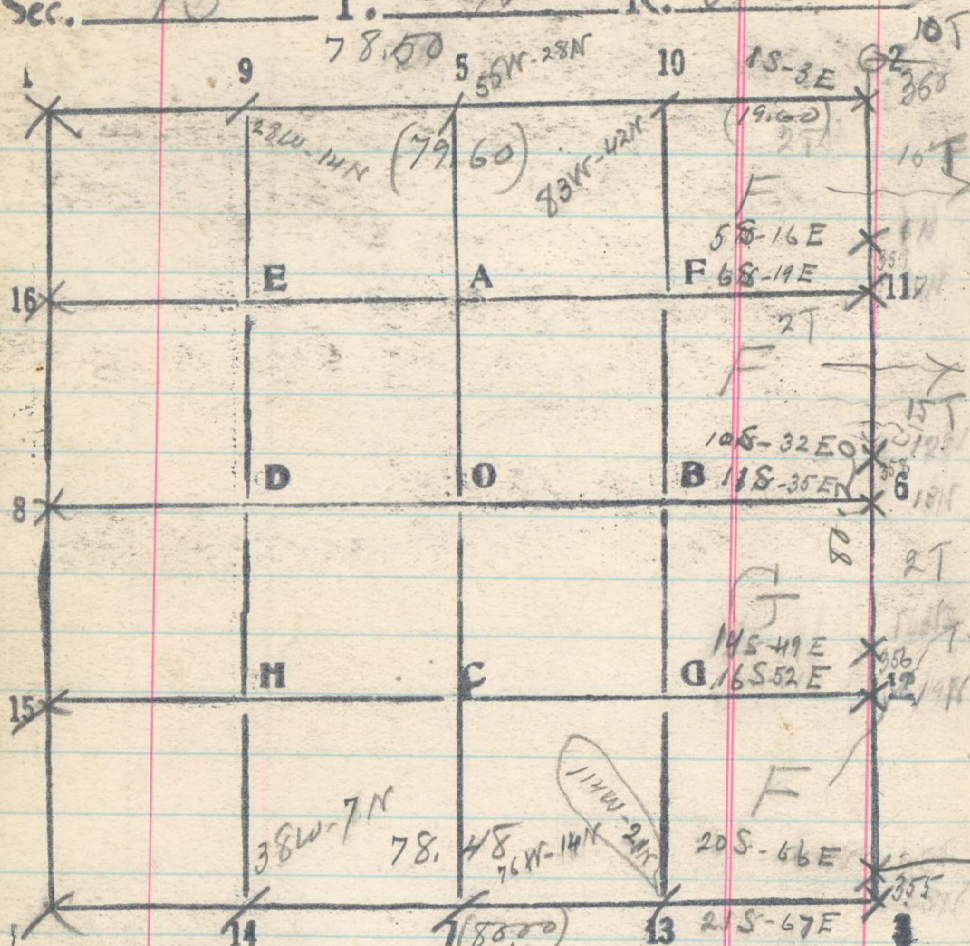


Sec. <sup>12</sup> 13 T. 2N R. 35E



60 Set 1/16 for Sec 18  
 6355 Set 1/16 for Sec 13  
 80 Set cor of secs. 18 & 19 notice  
 of old con July 2, 1917

East bet 13 & 24  
 7848 C.C. of secs. 13 & 24 bears N, 28 lbs.

East bet 12 & 13  
 7846 C.C. of secs. 12 & 13 bears N, 56 lbs.  
 (79.60)

From cor of secs 7 & 18, a stone  
 3.60 in MS Sec 13 South by solar  
 20 Set 1/16 for Sec 18  
 2360 Set 1/16 for Sec. 13  
 40 Set 1/4 cor for Sec 18  
 4360 Set 1/4 cor for sec. 13