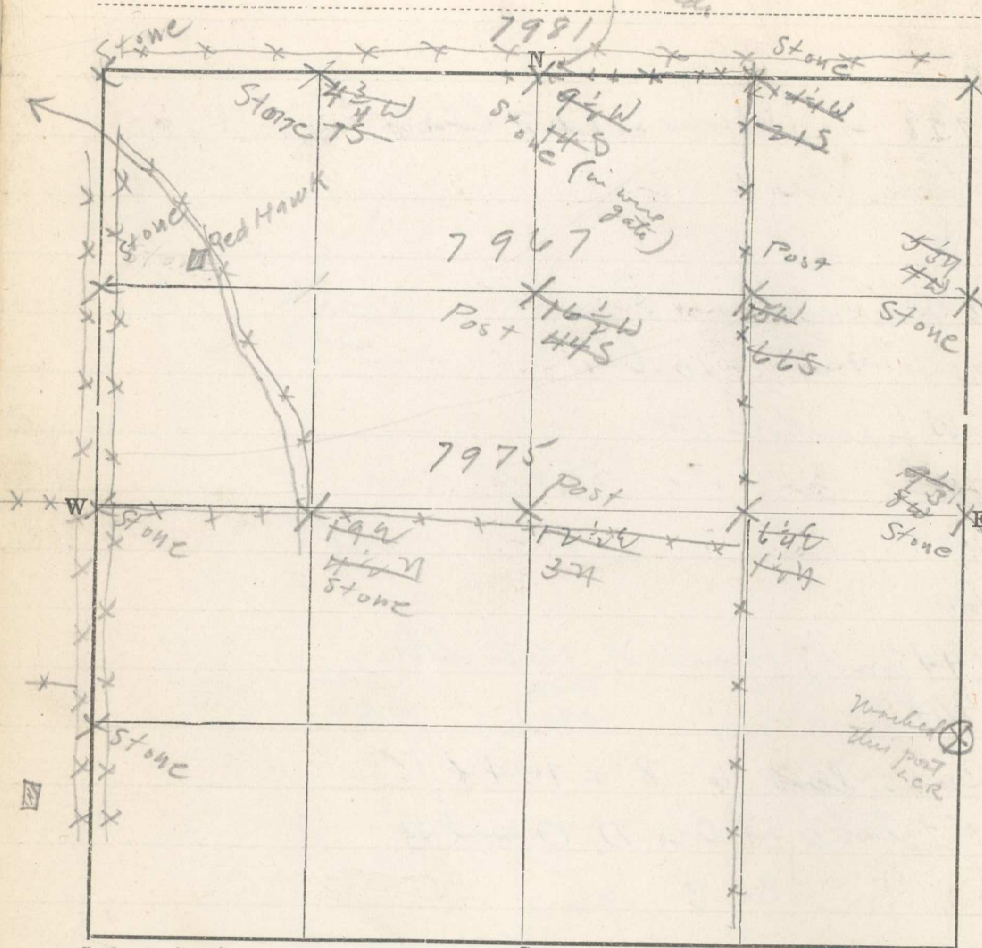


Sec. 10 T. 1 R. 33

Examiner Date 4/12 1918

Line 4.6 lth wide



Scale 1320 ft. 1 in.

S

S from Cor 7 - (Perimeter already run in)

20

40

5986 Cor 12 bears W 12 lth

W from Cor 6

20

40

60

7973 - Stone in center road bears N 6 lth.

From this stone run N

20

4018 Cent. road bears S W

4/13 - From same stone run S

20

4018 Cor 3 bears E 3 lth.

From stone 7 act as Cor 2 run W

20

40

60

8057 Cent. road bears S 6 lth

4/15 - From Cor 16 run E

40

60

7967 Cor 11 bears S 88 lth.

4/20 - E from Cor 1

20

40

60

7981 Cor 7 bears S 28 lth