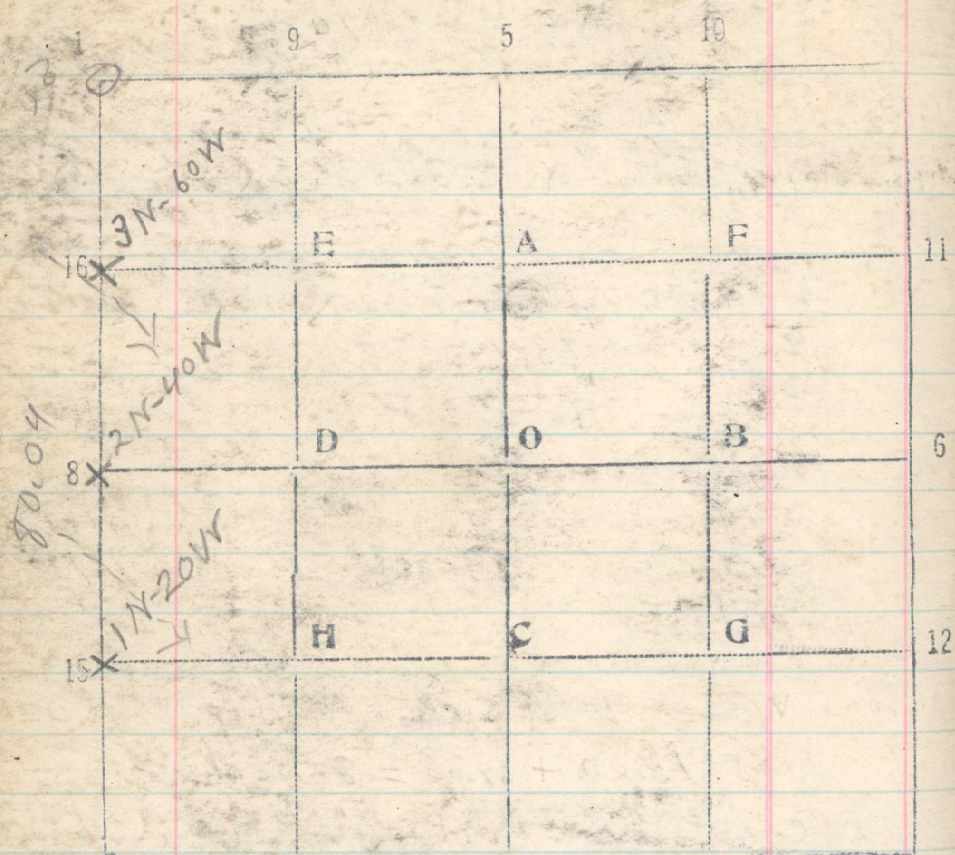


Sec. 30 T. 3N R. 36E



From cor of 25, 30, 31 & 36 river North bet 25 & 30

Apr 12
20.00 Set 1/16 cor
27.01 Gulch, S 2,
40. Set 1/16 cor Gulch, S 2
58. Set 1/16 cor
80.00 Cor of 19, 24, 25 & 30 remold, 80 lks.

R 1/2 3.11 1/2 2.296 .235 1.107
115 .084
3.106 .321 Res 3.08

3 + 19.5

2 + 80

.39.5

Length of Bridge 262

3.195

12

5 1/2

17 1/2

9 1/2

8 1/2

4

12 1/2

.30

2,895

1,447

4,342

4

4,38

4,78

.39 = 26 ft.

3.195

.25

2,845

1,427

4,267

4

4,30 - 477

26

13

39.4

26 ft

16

15

260

130

390

4

3,94

100

60

150

1

4,65

4,48

232

330

320

284.5

458

22.7

68.2

16

15

145

4

147