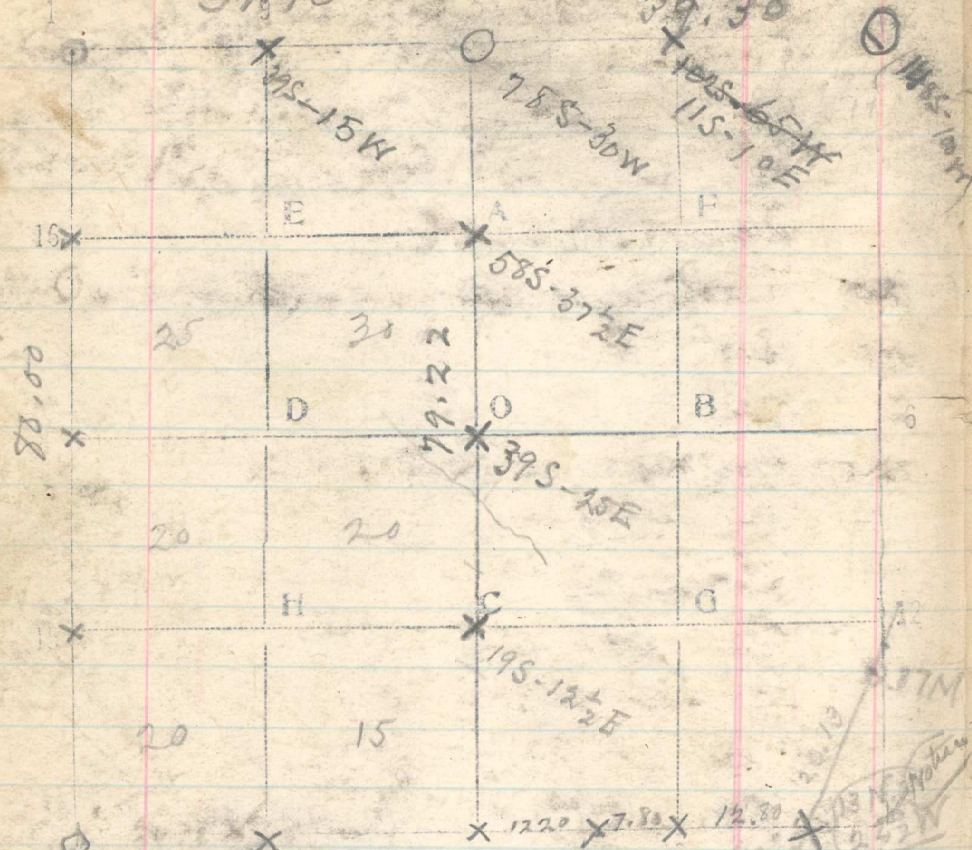


32

T 3/4 R 36 E

39.70 East Random to 88.00 39.30



From 37 1/2 M corner N 70° E.  
 20.13. Re-estab missing C.C. of sec. 5 & 22.  
 11.26. 27M cor bears W. 45 lbs. April 9, 1918

From 37 1/2 M corner S 32° W N.  
 20.13. Re-estab missing C.C. of sec. 5 & 22.  
 11.26. 27M cor bears W. 45 lbs. April 9, 1918

From 37 1/2 M corner S 32° W N.  
 20.13. Re-estab missing C.C. of sec. 5 & 22.  
 11.26. 27M cor bears W. 45 lbs. April 9, 1918

From 37 1/2 M corner S 32° W N.  
 20.13. Re-estab missing C.C. of sec. 5 & 22.  
 11.26. 27M cor bears W. 45 lbs. April 9, 1918

From 37 1/2 M corner S 32° W N.  
 20.13. Re-estab missing C.C. of sec. 5 & 22.  
 11.26. 27M cor bears W. 45 lbs. April 9, 1918

April 8, 1918

Commence at cor of 29, 30, & 145

as identified by Dave Bonifer  
 From this point the stump of a pine  
 tree, evidently old B.T. mark, is 9. bears  
 S W lks. <sup>Page 15</sup> 25° W 67 lbs

Thence South by solar,

- 20 Set stake on bank back, NE, Cotton 30 N 77° W 30 lbs
- 40 Set
- 60 Set
- 80.03 Cord 31 & 32 bears East 48 lbs.

Thence East

- { 2.60 - 34° slope } 13 lbs
- { 90 - 20° slope } 6 "
- { 4.50 - 9° slope } 2 "

- 11.69
- 12.26
- 20. Set
- 19.49
- 18.50 Triangulate across gulch. Angle 5° 40' to left  
 Base 1875. Dist 18.70 + 18.50 = 37.20
- 40.00 No trace on top hill side. Set 1/4 cor of sec 32
- 52.20 Set 1/4 cor of sec 5
- 65 Set
- 73.35 C.C. of sec 5 & 32, as marked, bears N 44 lbs
- (72.80)
- 55

April 9, 1918