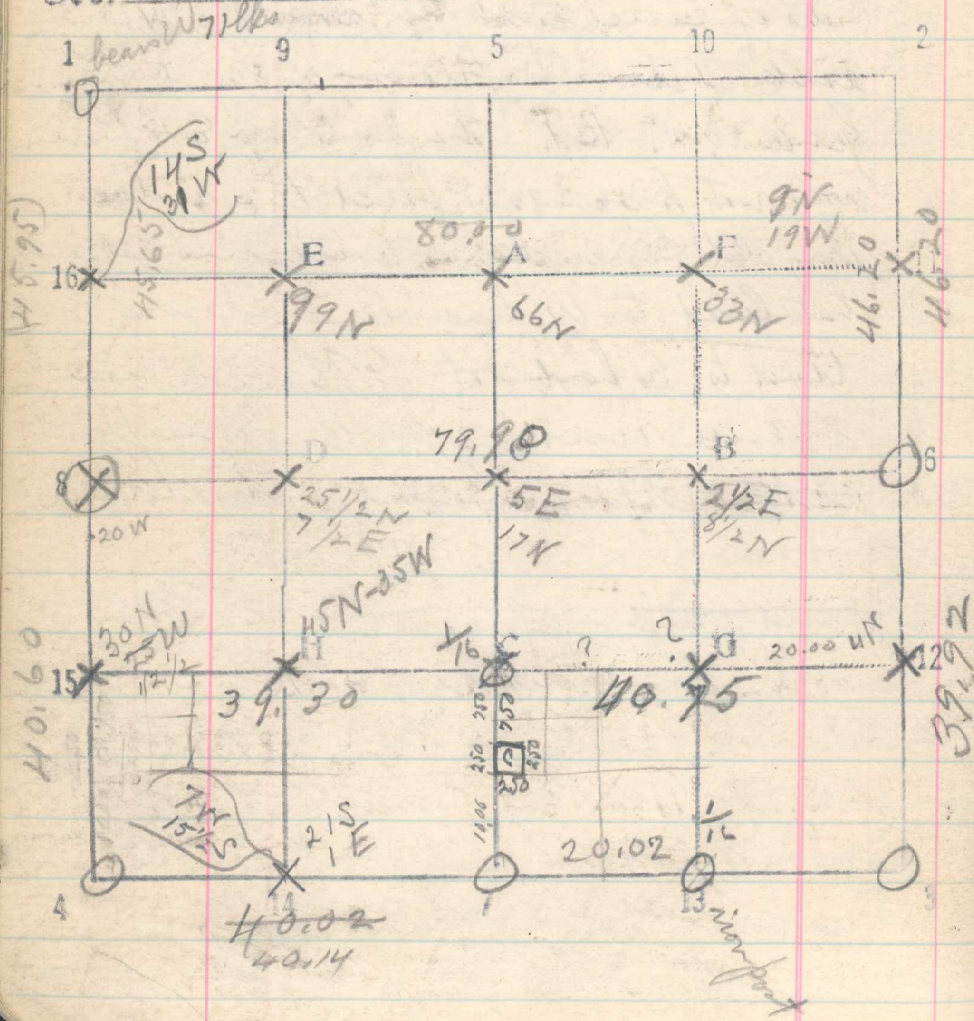


H6) 71  
 4/10/19, Survey of Cemetery described as  
 SW<sup>4</sup>SW<sup>4</sup>NW<sup>4</sup>SW<sup>4</sup>S E<sup>4</sup> sec 4-15-33

Sec. 4 T. 15 R. 33E



1917

Decks

From cor of 4.5.8 + 9 run North bet 4 + 5

20 Set 1/16 cor.

40.60 Point for 1/4 cor bears West <sup>50</sup> 25 lbs.

Determine this point by measuring N 65° E, 85 lbs. from a cottonwood 12 ins diam. Marked 1/4 S. B.T. Marks completely overgrown, so I had to cut into the tree about 3 inches to uncover the marks.

Thence north by BS on sec cor

20 Set 1/16 cor.

H5.65 C.C. pines H + 5 bears West 71 lbs  
 (45.95)

12-13-17

From 1/16 cor at 15-S. 4 run East

20 Set 1/16 cor at H.

39.30 a stone marked 1/16 bears N. 90 lbs. Cotton stump N 28° W 150 marked 1/16

40. Set 1/16 cor at C  
 Thence East

20 Set 1/16 cor

40.75 1/16 cor at 12-S, 4 bears S. 22 lbs