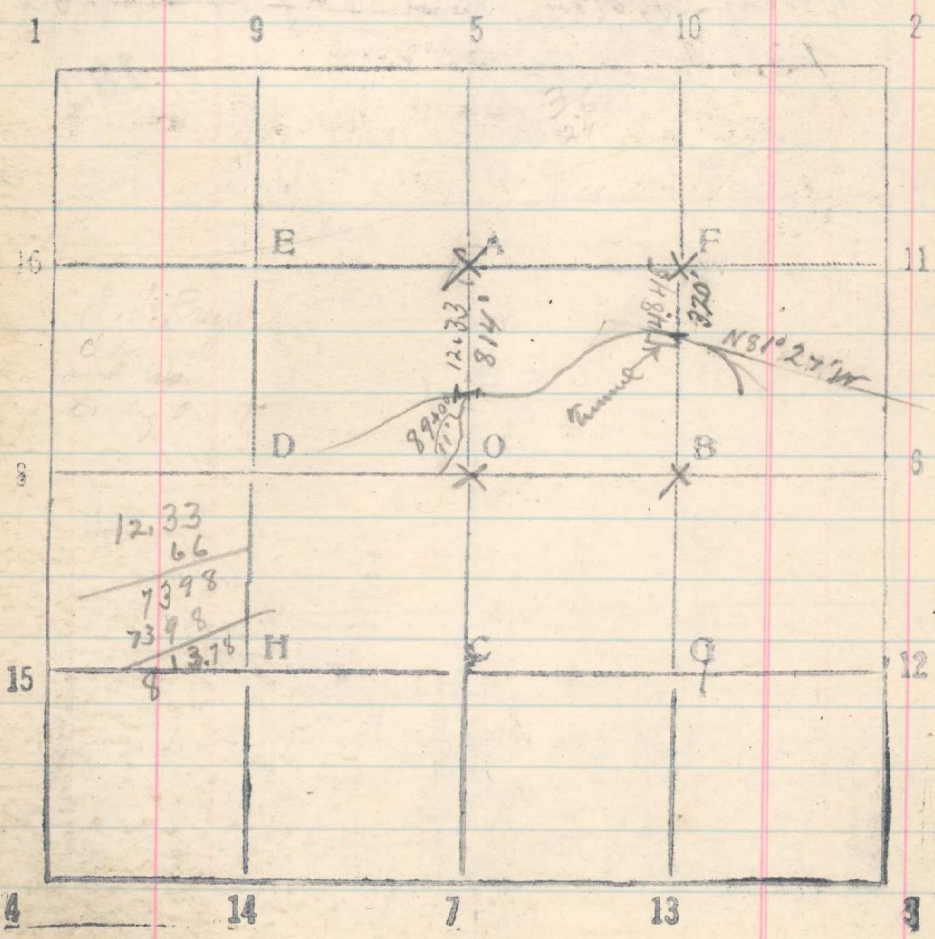


$$\begin{array}{r} 49.80 \\ 24 \\ \hline 612 \\ 814 \\ 407 \\ \hline 1221 \end{array}$$

$$\begin{array}{r} 3 \overline{) 4.84} \\ 161 \\ \hline 324 \end{array}$$

$$\begin{array}{r} 3.20 \\ 160 \\ \hline 480 \\ 48 \\ \hline 484.8 \end{array}$$

Sec. 4 T. 2N R. 30E



To Locate pipe line run South from F-S. 4  
 =  $\frac{4846}{320}$  Intercept pipe line at east end of tunnel,  
 course S 81° 27' W 183

From A-S. 4 run South  
 =  $\frac{12.33}{814}$  Intercept pipe line 11' E. of Sta. 89+00  
 From Sta. 89+80 to Sta 88+20 the course of  
 pipe line is N 82° 30' E  
 (From P.D. near retaining wall ~~the~~ course of  
 pipe line is S 64° 25' W for about 300 ft.)