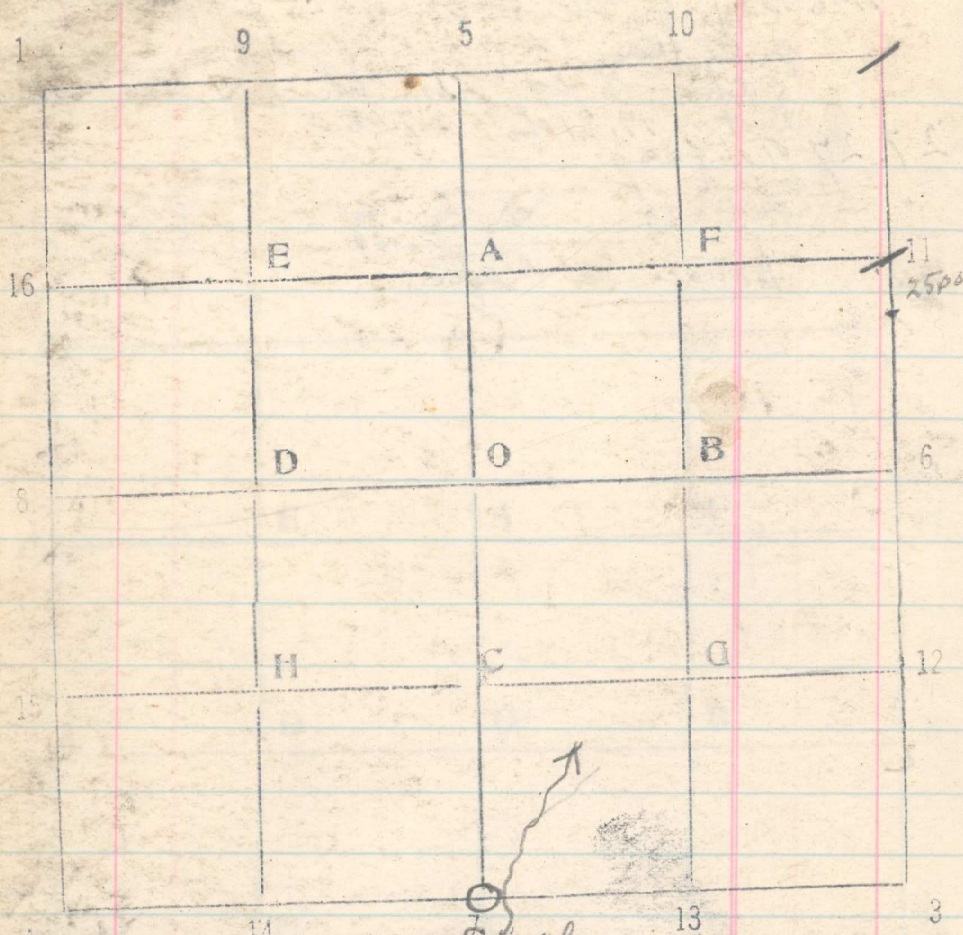


Sec. 14 T. 2N R. 35E



From top 11-5-14 run South

	N	S	E	W
South 5.00		5.00		
S 67 1/2° W 20.60		7.09		18.70
S 29° W 7.00		6.12		3.39
S 9° E 2.10		2.07	.33	
S 12 1/2° W 4.20		4.10		-.91
		24.38	.33	23.00

	From	T	N	S	E	W
S 8 1/2° E	2.30			24.38	.33	23.00
S 16 1/2° W	2.40			2.27	.34	16.78
S 4° W	2.90			2.30		.20
S 47 1/2° W	.90			2.89		.66
S 3 1/2° W	1.20			.61		.07
S 11° W	6.10			1.20		1.16
S 81° W	5.00			5.99		4.94
S 68° W	1.50			.78		1.39
S 31° W	1.80			.56		.73
S 22° W	1.90			1.54		.71
S 35° W	1.70			1.76		.97
S 23° W	6.00			1.39		2.34
S 9° W	5.40			5.52		.84
S 23° W	1.80			5.33		.70
				1.66		
				58.18	.67	38.59

	From	T	N	S	E	W
S 45° W	3.00			2.21		37.92
				2.21		2.21
				60.39		40.13
Thence S 26 1/2° W	4.30			3.86		1.90
S 13 1/2° W	9.30			9.04		2.17
S 36° W	7.70			6.23		4.53
S 84 1/2°	8.70			.91	865	8.66
				2008.965		8.66