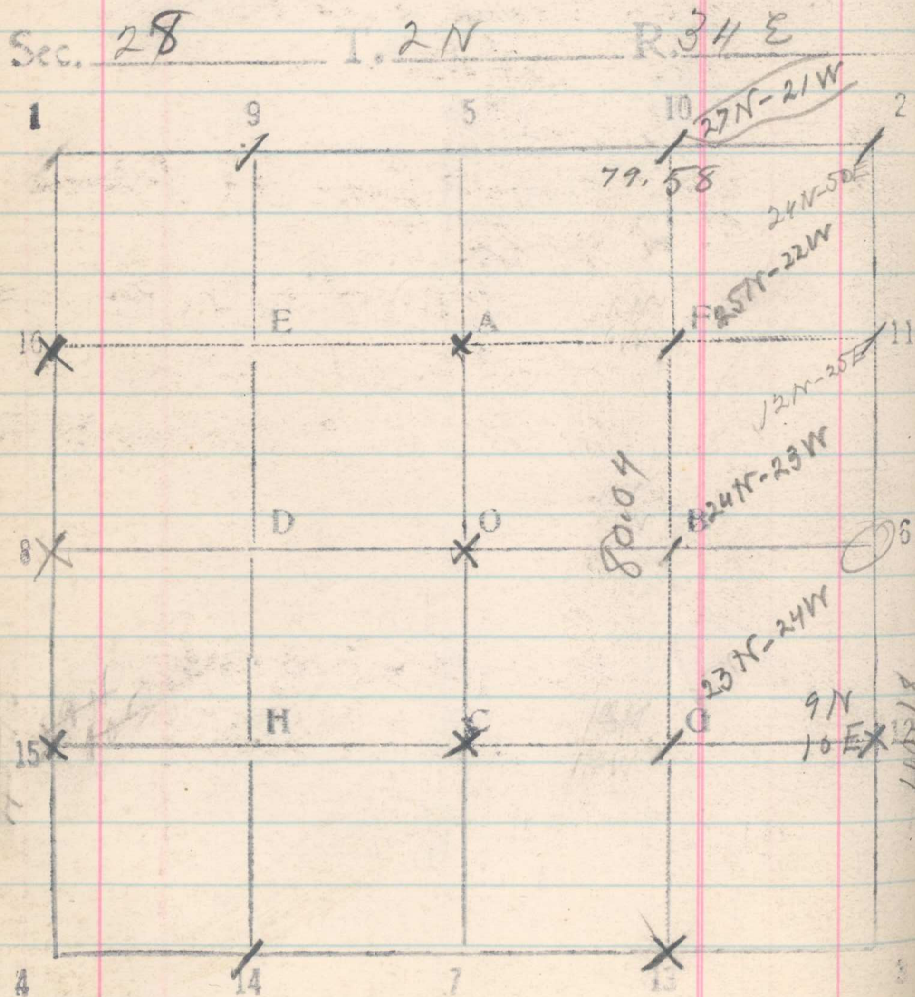


Sec. 28



Nov. 27, 1917

70/9

North bet Secs 27 & 28

20 Set $\frac{1}{16}$ cor

40.18 $\frac{1}{4}$ cor bears E. 20 lks.

Thence North

20 Set $\frac{1}{16}$ cor.

39.70 Temp. cor set from West beam
East 92 lks. (54N-42W)

40.06 No trace of cor of 27-22-27 & 28

Cor to be reset, 24N & 50E of temp. cor

Temp. cor (on 27N-21W)
From $\frac{1}{16}$ cor at 10-5-28 run South

20 Set $\frac{1}{16}$ cor

40 Set $\frac{1}{16}$ cor

60 Set $\frac{1}{16}$ cor

79.78 $\frac{1}{16}$ cor bears West 26 lks.

$5\frac{1}{4}$ miles - Nov. 27 1917