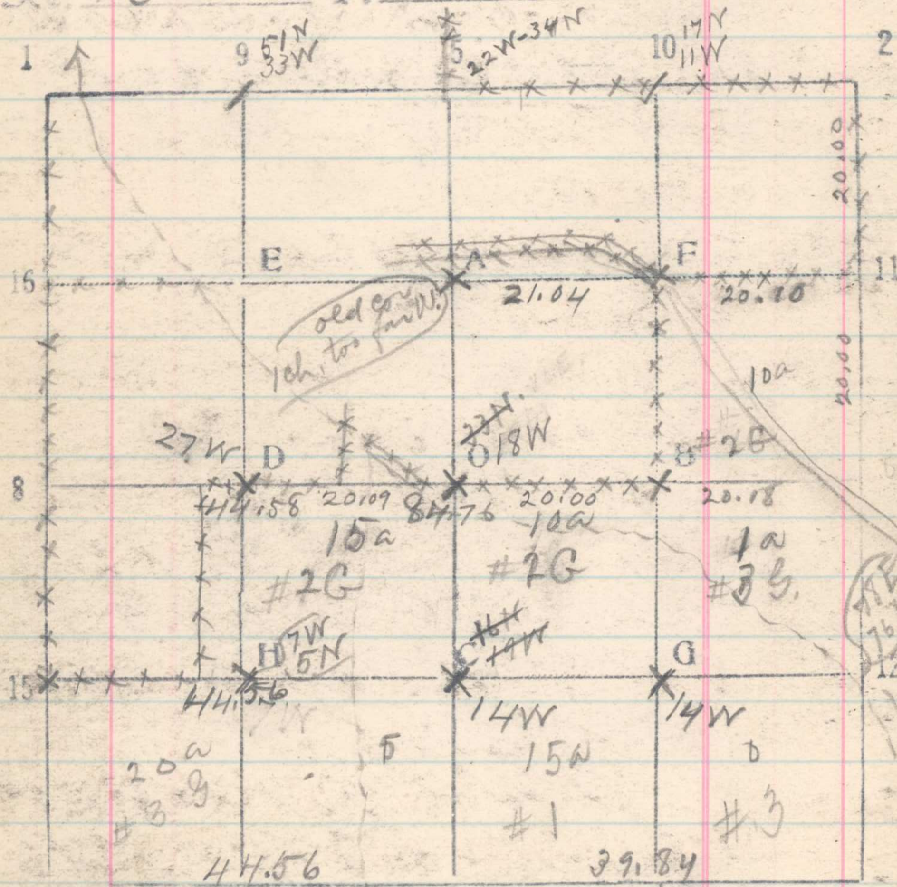


Sec. 30 T. 2N R. 34E



470.  
15.85  
20.85

4

From 11 - S. 20 run West

59

20.10  
41.14

Intersect  $\frac{1}{16}$  cor. a stone.  
 $\frac{1}{16}$  cor. on line. An old cor. a stone in  
Mid Stone, about 1 ch. W. of true point,

From  $\frac{1}{4}$  cor bet 29 & 30 run W.

20.18

Intersect  $\frac{1}{16}$  cor. a stone mkd  $\frac{1}{16}$   
I build M.S. N of cor. Fence consisted  
of 400. cor.

39.53

temp. O. set from S. bears S. 33 ch.

48.00  
60.

Set  $\frac{1}{16}$  cor. (27W)

63.72

Fence cor on line, S. + E, intersect  
a stone marked (x)  $\frac{1}{16}$ . This corner is  
about 3.45 ch. West of its proper  
position. Enter Catholic Church field

84.76

Intersect  $\frac{1}{4}$  cor. on W bdy Sec. 30

From  $\frac{1}{16}$  cor on W bdy sec. 30, 200 ch  
Set  $\frac{1}{4}$  cor line east

20.25

A stone mkd.  $\frac{1}{16}$  bears N 44 ch  
at fence cor at S & cor Catholic  
church field

24.70

Set  $\frac{1}{16}$  cor