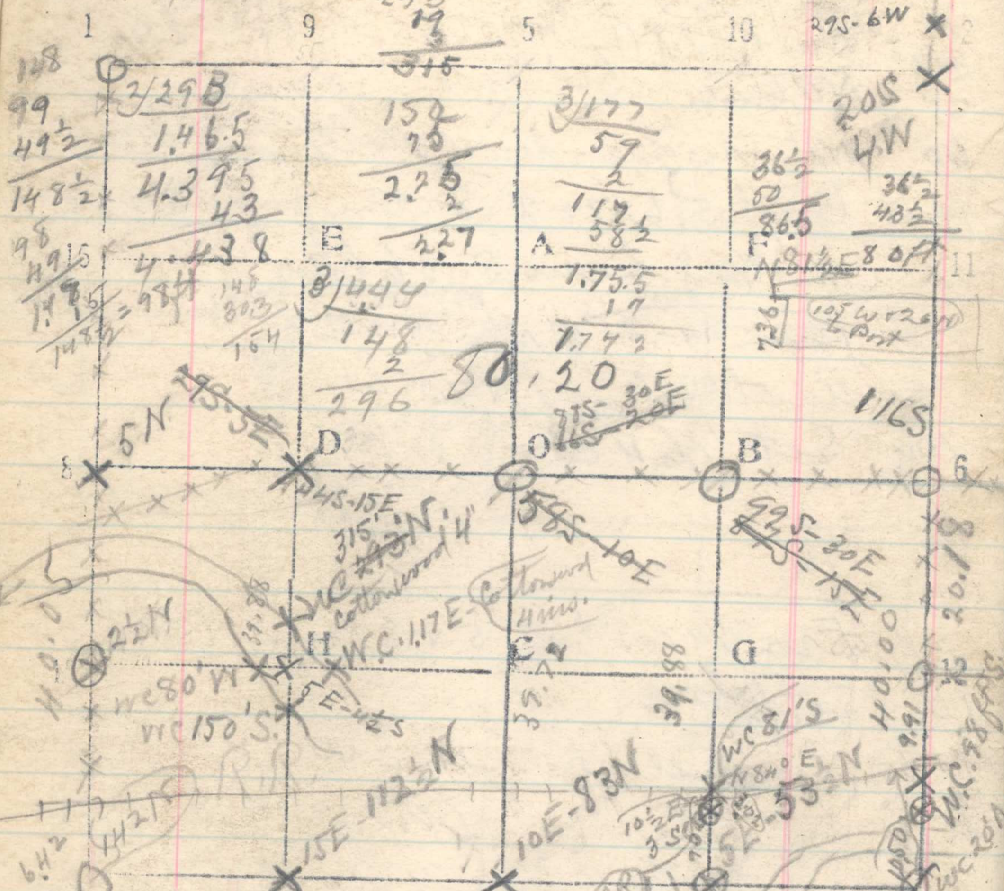


Sec. 4- 77.76
 79.88 T. 2N 19 34E 21S



North bet 9+10. 79.80
 20 Set 1/16 cor.
 40.02 Fence Post bears W. 22 lks
 79.56 In road, S+E. Pt. for cor of 3, 4, 9+10, identified by Martin
 80 Madison as being 15 ft. N+15 ft. W. of NE corner of
 fence, bears 20.4 lks. Set stake for W.C. 20 ft S
 and 20 ft E.
 Thence north bet, Sec 3+4
 10 Set 1/16 cor
 19.82 1/16 cor at fence cor is 38 lks. + 9 lks Westline

40.00
 79.79 Intersect 1/4 cor. a stone mark (X)
 pt. on the S. of

From cor of 3, 4, 9+10 run West
 20 Set 1/16 cor
 40.1 Set 1/4 cor.
 24.44 100
 15.48
 39.92

60 Set 1/16 cor.
 79.88 Cor of 4, 5, 8+9 bears N. 14.2 lks.

Thence north bet 4+5

6.42 R.R.
 20 Set 1/16 cor.
 40. No trace of 1/4 cor. Set stake
 60 No " of 1/16 cor.
 74.80 Point for C.C. of 4+5 3 bears E. 10 lks
 (74.60) Thence chain west.
 8.00 Stone in road, cor of 32+33.
 60.25 Fence cor. S+E. on line
 60.27 Set 1/16 cor. 9-5.5 (5 lks S+2 lks W. of fence post)
 60.63 Fence cor SW on line
 80.36 Set W.C. C.C. of 5+6, 16 ft. S under fence
 88.50 Center of line. Set cor of 31+32, + stake 24 ft S under
 (88.40) Thence west
 43.10/21.99 Fence to S. 12.99+8.10 = 21.09 (20.21) 88 lks from
 32.80 Fence to S. 32.80+8.10 = 40.90 (40.42) 38 lks
 60.56 Fence to S. (17 lks E of line)
 25.40 No cor. of 7+8 31 ft. 38+39 bears S. 15 lks
 (70.56)