

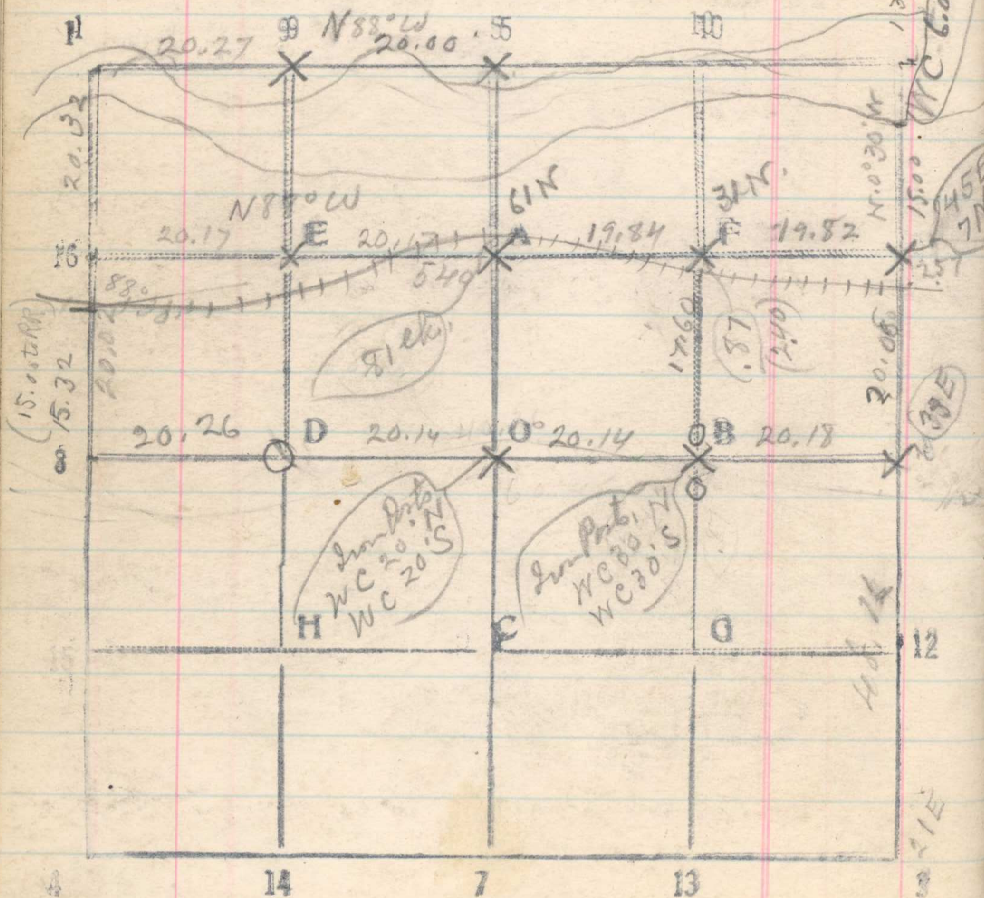
2934

| | | | |
|-------|-------|-------|--------|
| 60.52 | 20.22 | 4)24 | 80.52 |
| 80.51 | 40.26 | 182 | 210.52 |
| 20.12 | 20.26 | | 22 |
| | 80.74 | 80.44 | 94 |

5.8 2/122 1982 34 34 5W

116 61 1984 3966

Sec. 9 T. 2N R. 33E



(20.17) Jan. 14 1918.
 From 1/16 cov. at 11-S. 9 run west
 19.82 1/16 cov. a rock, bears S. 8 lks, 125
 39.66 1/16 cov. a rock, bears S. 20 lks.
 59.83 1/16 cov. a rock, bears N. 31 lks. forest.
 5 ch. S. rocky W. 5.47 ch. N. 5 1/2 ch.
 80.00 1/16 cov. a stone, bears N. #7 lks, 82 ch.

Thence South

20.02 1/4 cov. a stone, bears W. 3 lks.

Thence East

20.26 1/16 cov. a stone
 40.

60.54 Set stone in road, + set Pt. for W. C. 30 ft N. and 20 ft S.

80.72 Point in road for Wilkes' 1/4 cov bet 9 & 10.

Feb. 28 From 1/16 cov. at 11-S. 9 run N. by B.S.

on 8-S. 9,

15.75 Bank of Unatilla River

18.66 Set stake on bar in river.

Rise Wat 7.00 ch.

20.32 Intersect line run W. from 1/4 cov bet 4 & 9

21.44 at 40.27 N side of river.

Continue North 21° W.

20.00 Set 1/16 cov
 40.00 Set 1/16 cov.

75.13 Cov of 4.5. 32 & 33. bears W. 30 ch.

(75.50)