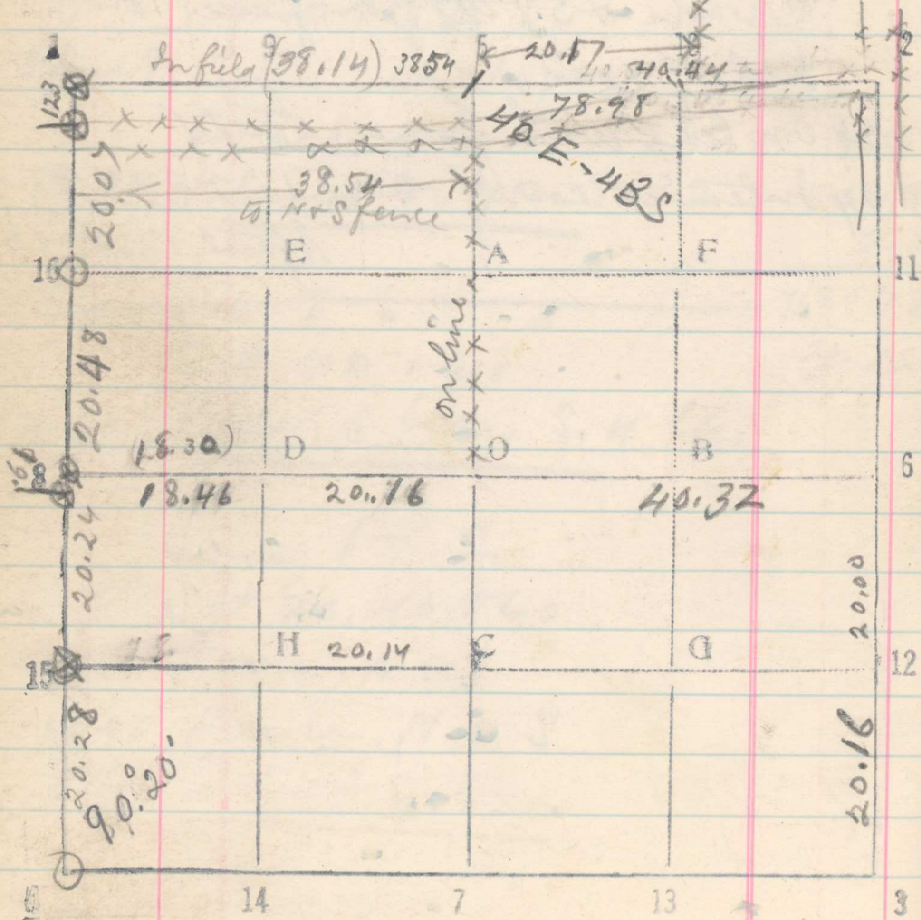


Jan 5. Non wldy Sec 31.
 20.28 Intersect from post 1/16 cor for sec 31
 + 20.24 " " " 1/16 " " sec. 31 - 1/4 cor for Sec 26 (146)
 + 20.48 " " " 1/16 " " 31
 + 20.07 " " " 1/16 cor for 31+32 cor for 25+26, 12+25

Then East 90° from Tpline.
 38.14 Set temp 1/4 cor
 38.54 on line with fence to S.
 58.71 Fence to N
 78.98 Cor of 29, 30, 31 + 32 bear S. 91 lks.
 Sec. 31 T. 1 N R. 33 E



38.14
 48.84
 78.98

8637

Dec 14

From C.C. Tp. 15. R. 32 + 33 E run East
 along Base Line, this cor is fence post, fence
 runs 2. W. + 8. + 1/4 cor post marked W. E. bears S. 25 lks.

- 13.20 Set 1/16 cor for Sec. 6
 18.70 Intersect Cor of T/N R. 32 + 33 E.
 33.20 Set 1/16 cor for Sec. 6.
 37.20 Set 1/16 cor for Sec. 31
 53.20 Set 1/16 cor for Sec. 6
 57.20 Set 1/4 cor for Sec 31
 73.20 Set 1/16 cor for Sec. 6
 77.20 Set 1/16 cor for Sec 31
 93.20 Set 1/4 cor for Sec 6.
 97.20 Set Cor of secs 31 + 32, Falls in
 road, N + S, 46 lks. E. of N+S fence
 and 20 lks W + 3 lks. S. of fence corner,
 N. + E.
 113.20 Set 1/16 cor for Sec. 6
 117.20 Set 1/16 cor for Sec. 32
 133.20 Set, C.C., of secs 5 + 6,
 137.20 Set 1/4 cor for Sec 32
 153.20 Set 1/16 cor for Sec. 6
 157.20 Set 1/16 cor for Sec. 32
 173.20 Set 1/4 cor for Sec 6
 177.20 Cor of sec 32 + 33, on line