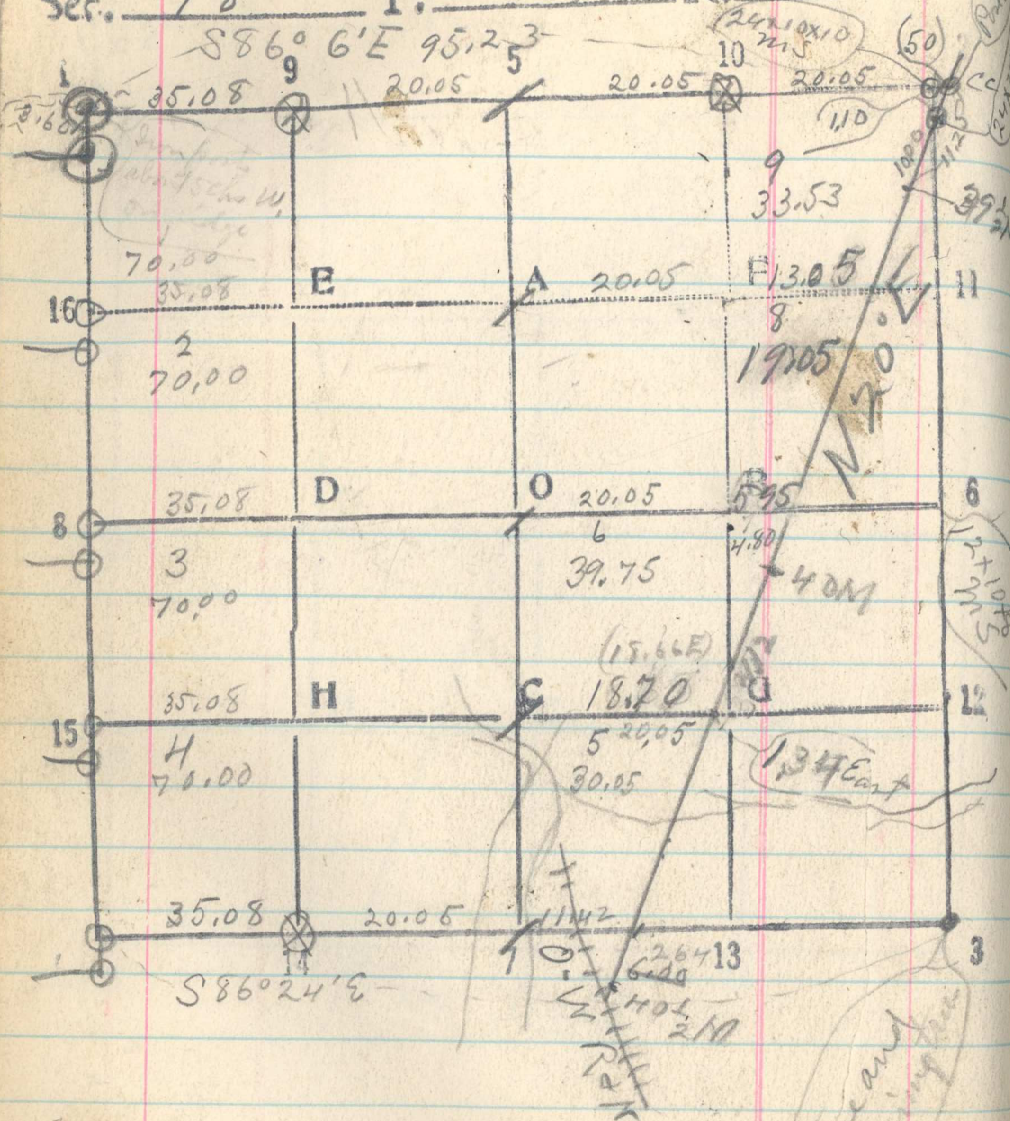


Ser. 18 T. 2 N R. 36 E



26.80 36 dist from temp CC on south  
to CC on N line of sec 18

move 2120 ch Pt 106 South } 6360 ch Pt move 106  
move 4240 ch Pt 106 South } South.

Dec pt 1919 450

from 40 1/2 mile Post N 20° E  
retracing Reservation boundary  
Ascend steep slope  
6 00 ch set temp CC  
7 1/2 ch set post for forestibly  
on spur of Rldg then descend  
15 00 chs cross ravine strike N 40 W  
38.25 chs 40 MI Cor bear 200 chs W  
The 42.40 chs Pt set 50 chs short  
47 chs cross Ravine strike west + ascend  
63.60  
76.59 chs 39 1/2 MI Cor bear 59 1/2 chs W  
9 set over 39 1/2 mile Post + sight back  
to 40 mile Post and set  
8.52 ch CC Cor bear 77 chs west  
85.11 chs from 210 1/2 MI Post to CC on East  
line of ser 18  
88.36 set stake for temp CC sec 17  
set temp sec Cor to Sects 17-18 79+20  
50 chs west of temp CC