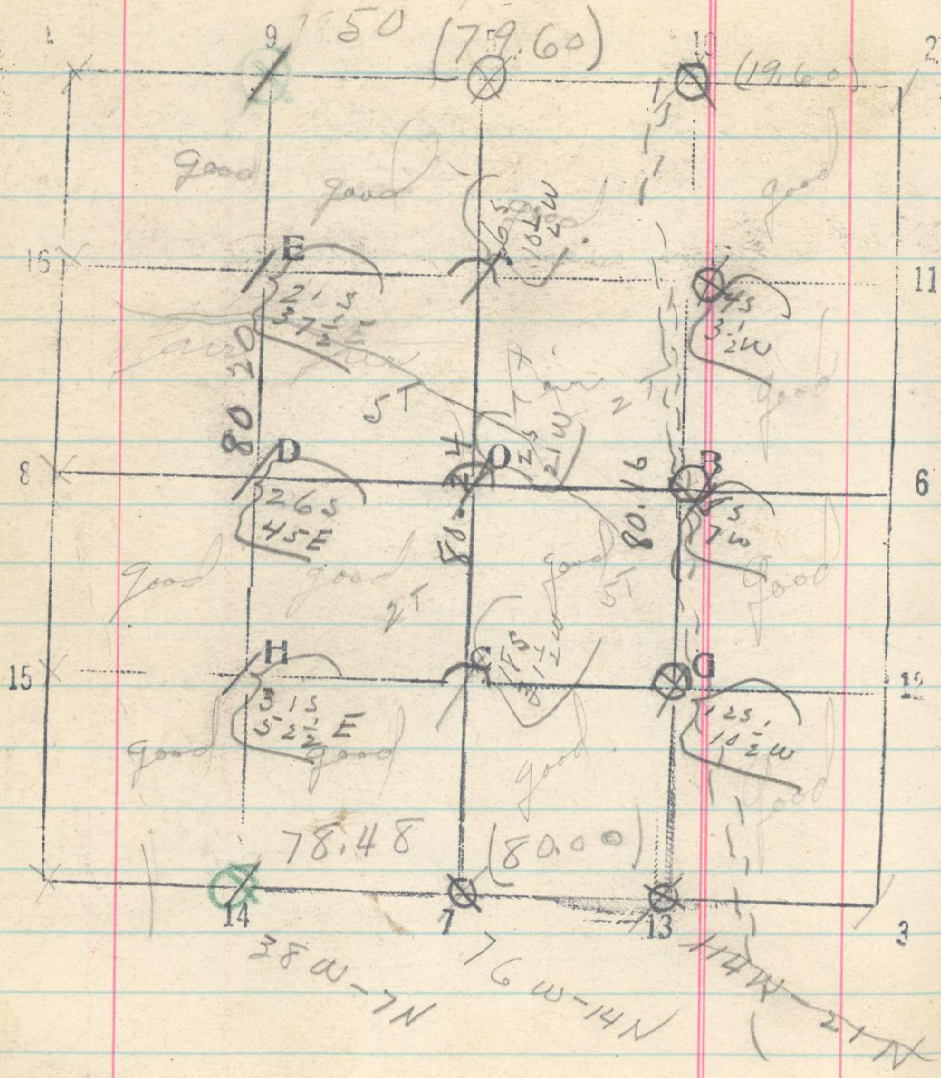


.18

Sec. 13 T. 2 N R. 35 E



536

7/14 line 14 (See Sec. 12)
 7/14 line 5-7 South from Center
 lot 20-40-60
 80.24 1/4 cor bears W. 42 lks.
 7/21 line 10-13 South from East half
 lot 20-40-60
 80.16 1/6 cor 13 bears W. 4 lks.