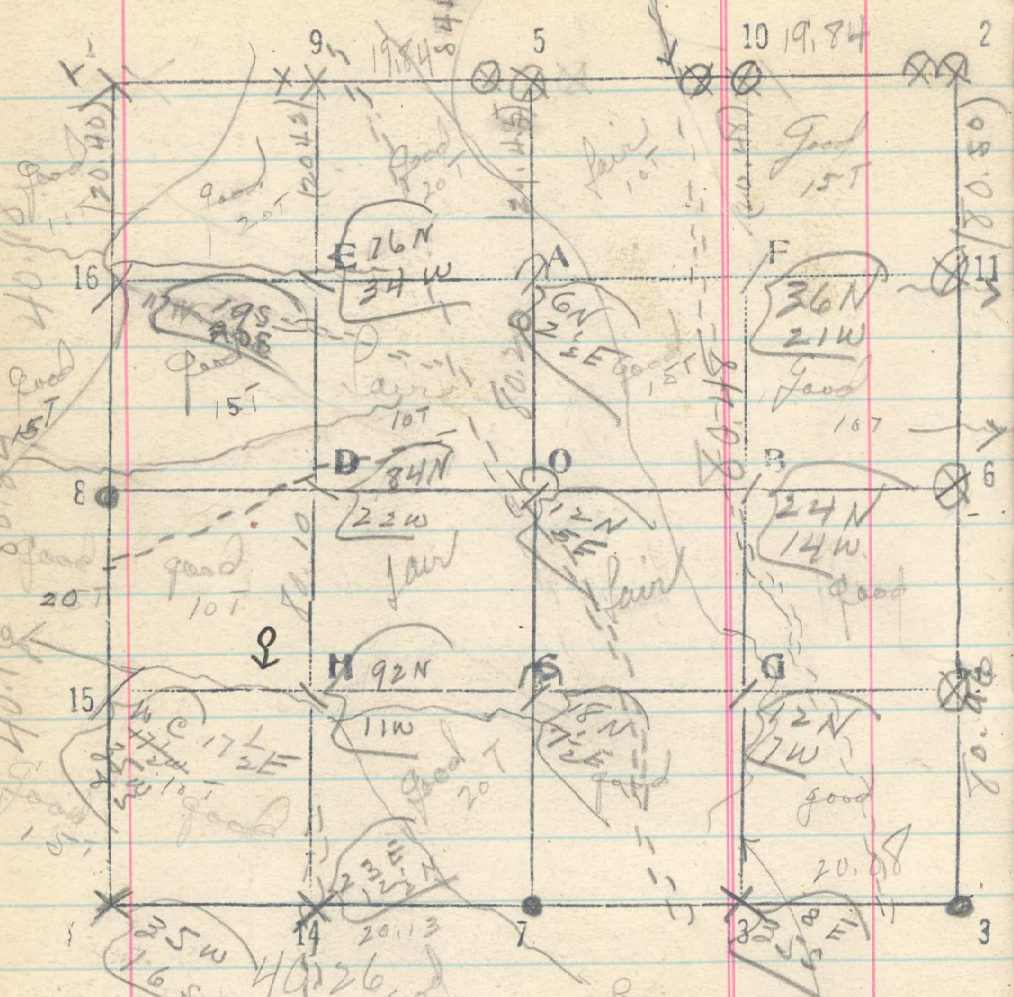


30

Sec. 3 N R. 35 E

Beats
7-6-13-12-3



9/24 line 5-7 South thru center
let 20.45 - 40.45 - 60.45

80.20 1/4 cor bears E 10 krs.

9/25 line 14-9 North thru west half
let 20 - 40 - 60

80.10 1/4 cor. 9 bears W. 45 krs.

9/12-15 line 1-8 South between 3548

let 20 -

18 square crk. N 20 E. / 20 square crk N 20 W

26 square crk N 20 E. / 39 - Ravine N 60 W.

40.18 Old 1/4 cor. bears E. 40 krs.

9/5 line 8-4 South between 354 from 1/4 cor.

let 20 - 40 (No sign of sec. cor)

9/5-16 line 1-8 sec. 10 continue

line south between sec. 9 & 10

let 60 / Ravine 47 - N / 69 - W

80.32 Old 1/4 cor. bears W. 70 krs.

9/6 line 4-7 East between 3+10

let 20

20 Ridge N - S / 27 Ravine N / 35 Ravine N 20 W

39 Ravine N - W

40.26 Old 1/4 cor. established from B.T. bears N 25 krs.

9/16 line 7-3 East from 1/4 cor between 3+10

let 20 / 15 Ridge N - S / 25 Ridge N + S

40.16 sec. cor 3-10-11 bears S. 70 krs.

9/23 line 13-10 North thru east half
let 20 - 40 - 60

80.48 1/4 cor. 10 bears W. 28 krs.