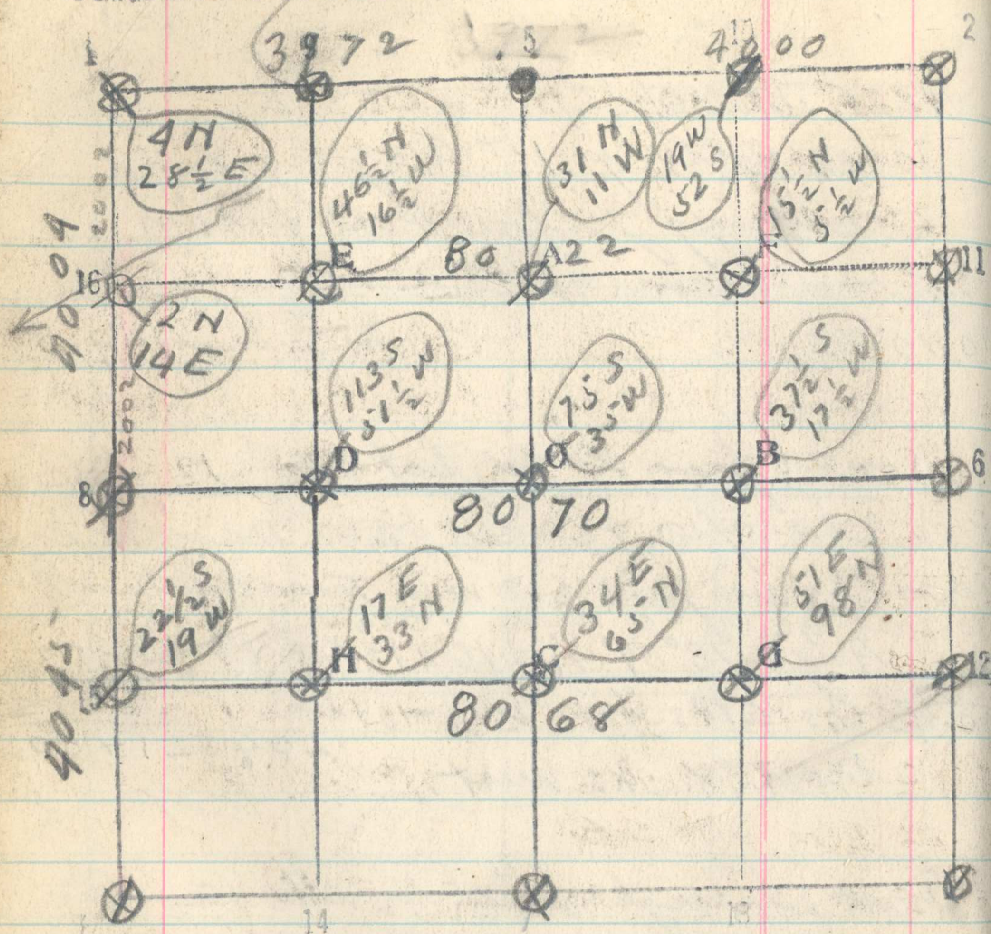


Sec. 12 ^{89 N} 14 E T. 1 N R. 34 E



NOTE

Marrinds falling on N Line of sec 12
 3972 Chs Cor to sects 11-12-1+2 bear
 178 IKS N

1826

Tuesday Nov 18th

441

Went through N 1/2 sec 12
 Turn angle of 4'45" RT N 85°15' W
 20-90-60 Chs set stakes
 1300 Chs Ravine South Pure Timber Here
 24 Chs Leave timber thence over ^{the} ~~top~~ ^{clay} ~~clay~~ ^{clay}
 63 Chs start ascent & enter thick brush
 70 Chs Leave brush some Pure here
 80 Chs set Temp Cor 16
 8022 Chs Cor 16 bear 63 North

North From 1/4 Cor bet sects 11+12+1+2
 1826 Chs To Wilber's Temp Cor 16
 2000 Chs set stake
 2075 Chs Ravine shade 575° W
 2065 Chs Temp 16-512 bear East 36 IKS
 3820 Chs Murringo cor marked 90 ch on East
 4000 Chs set stake
 8008 1/4 Cor bet 1+2 bear 57 the East