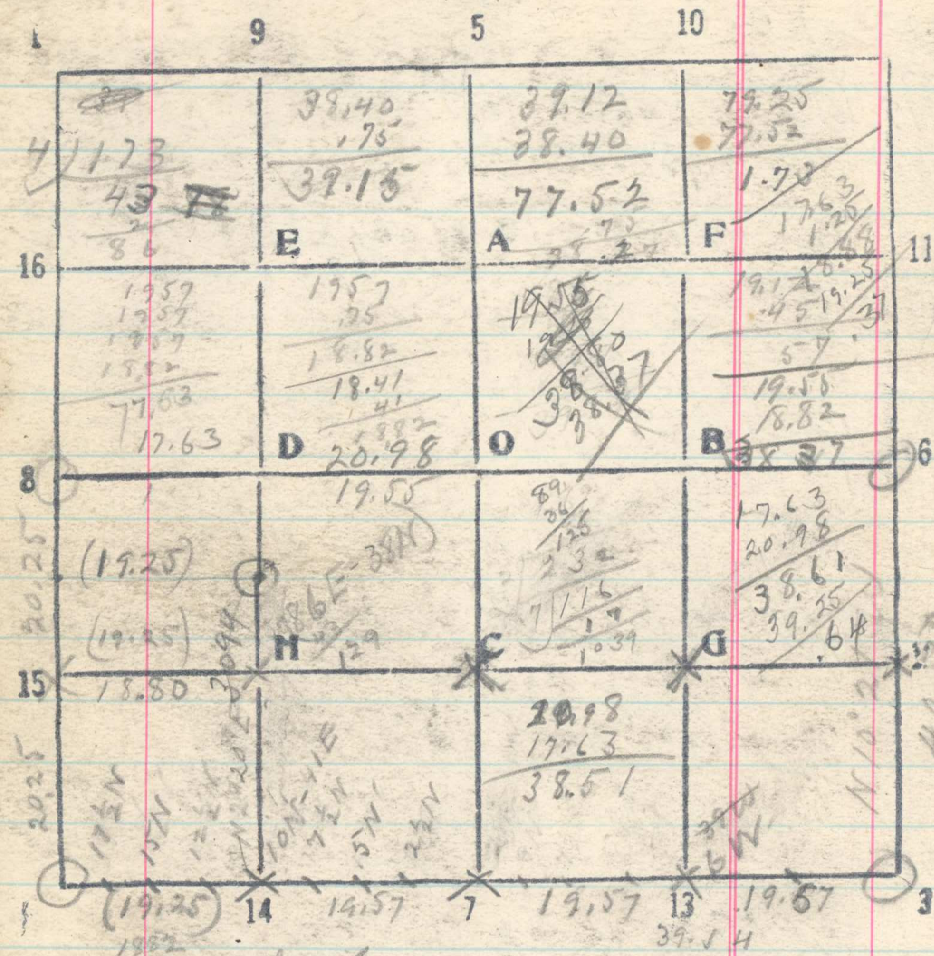


4 18 T. 3 N. R. 36 E



South from C-S. 18.  
20.12 Set temp gauge.  
Therm 388° 30' E by solar.

20  
12 Coropress. 17, 18, 19 & 20 bears N. 20 lbs.

Returns to temp 1/2 corbet 18 & 19 239  
N 88° 29' W by B.S. on coropress 17, 18, 19  
20 Set 1/16  
38.40 Coropress. 18, 18, 19 & 24 bears N. 20 lbs.

From C-S. 18 run No 20' W by solar by  
B.S. on gauge bet. 18 & 19.  
10 No trace of 1/32 cor. June 20, 1919

From 14-S. 18 run N 2° 20' E by solar  
20.24 Pt. for H-S. 18, located on E-W line  
bears W, 86 lbs.  
20.62 Point for 1/16 cor on this line  
38 lbs N. of paper print located on E-W line  
30.98 Intersect 1/32 cor. 2-H-S. 18,  
a decayed pine stump in  
Pine stump N E lbs. 18  
" " S W lbs. "

From 4-S. 18 run No 5' W by solar  
5.02 Set crop post  
15.07 Set iron post  
20.09 Set iron post. Aug 23 11