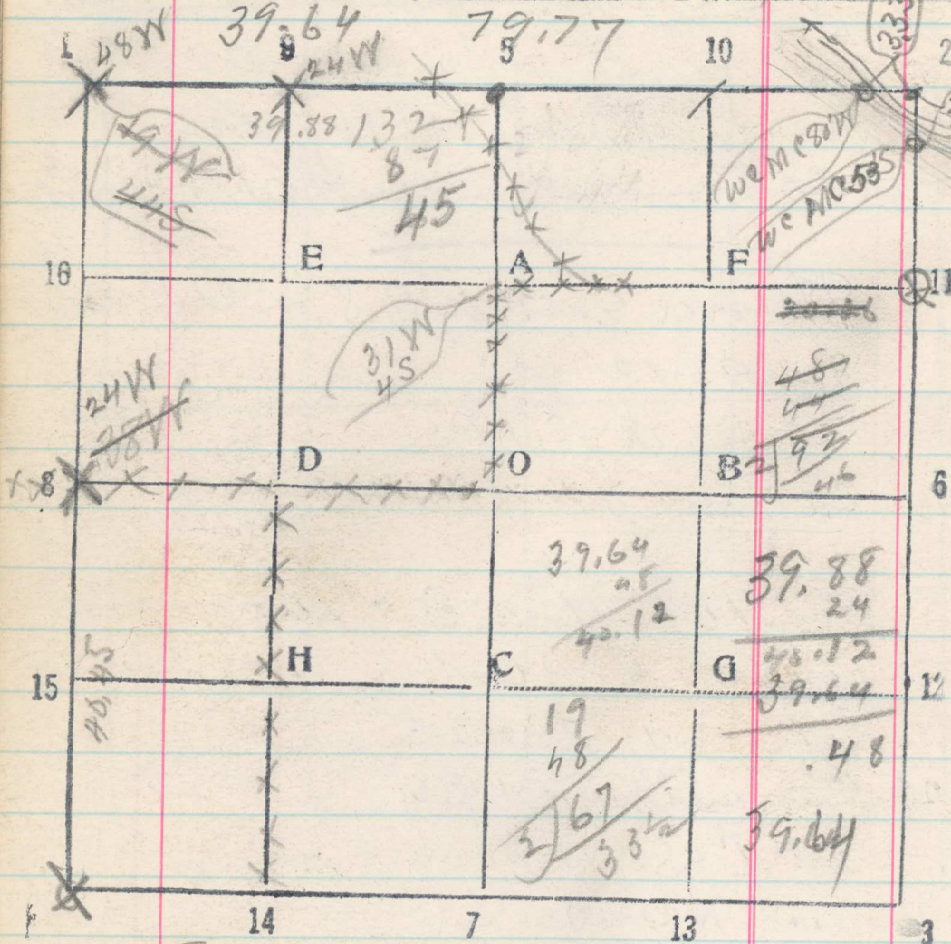


34

Sec. 14 T. 3 N R. 3 E



From cor. of secs. 11, 12, 13 & 14 run  
 South.

1.60 Right bank Wild Horse Creek NW,  
 2.00 Left " " " " NW

2.00  
 2.50  
 2.80

3  
 Point for M c falls in creek  
 Road, N 60° W.  
 Set W. c. to M. c. betrees 13 & 14  
 80 lks. S. of point where originally  
 established according to old field notes  
 Jan, 21, 1920

316  
 $\frac{386}{212}$   
 $\frac{3160}{53}$   
 $\frac{265}{89\frac{1}{2}}$   
 $\frac{44}{2}$   
 82  
 84  
 3  
 89

From cor. of secs. 11, 12, 13 & 14 run West  
 1.50 Right bank of Wild Horse Creek NW  
 2.12 Point for M c falls in creek  
 3.20 Left bank of Wild Horse  
 3.33 Set W c to M c, 120 lks. W. of where  
 M c was originally established, according  
 to old field notes.  
 5.50 Road, NW + S 60° W + S 60° E

Jan 21, 1920.