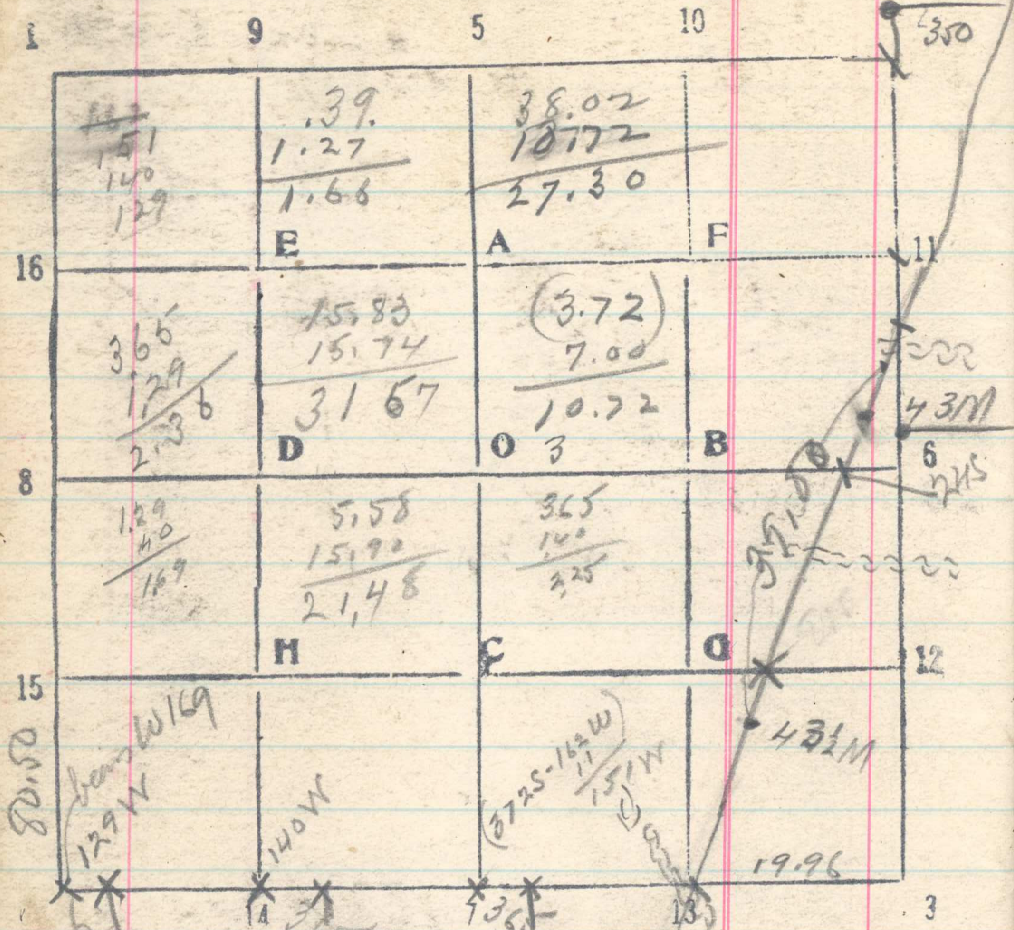


Sec. 30 36 T. 2 N. R. 30 E



Aug. 6 From 43 1/2 M cor, run N 20° E.
 5.58 Set temp stake at line 9-12
 15.74 Run N 70° W. 3.00 chs. Angle 70° 40'
 Dist. at 70° 40' = 7.4287 x 3.00 = 22.28 chs
 15.74 + 22.28 = 38.02 chs to flag.
 27.30 Set dump post for temp corner line 13-6

666 chs. W. of E body of Twp.
 38.02 Ridge slope E. + flag, bears W. 4265
 39.80 43 M cor on iron post, bears W. 4265
 Thence N 20° E
 1.30 Pine 24" on line, marked for BT.
 7:15 Temp C.C. of sec 31 & 36 set 25.15 chs
 S. of cor of 30 + 31, bears west
 10 lb.
 10:00 Set stake Aug. 6, 1919.
 20 Set stake
 39.22 Intersect 43 M cor 1
 650 - 105.9

From correct C.C. on S body sec. 36
 on Ry. bdy, run N 89° 47' W
 .04 Set 13-8-36
 16.28 Set 1/4 cor for Sec 1
 36.5
 19.53 (11 lbs short) Set 1/4 cor for sec. 36
 36.17 Set 1/6 cor 9-S, 1
 36.5
 39.82 Set 1/6 cor. 14-S, 36
 34.56 Set C.C. of sec. 1 & 2
 36.5
 59.71 Set corner sec. 35 + 36