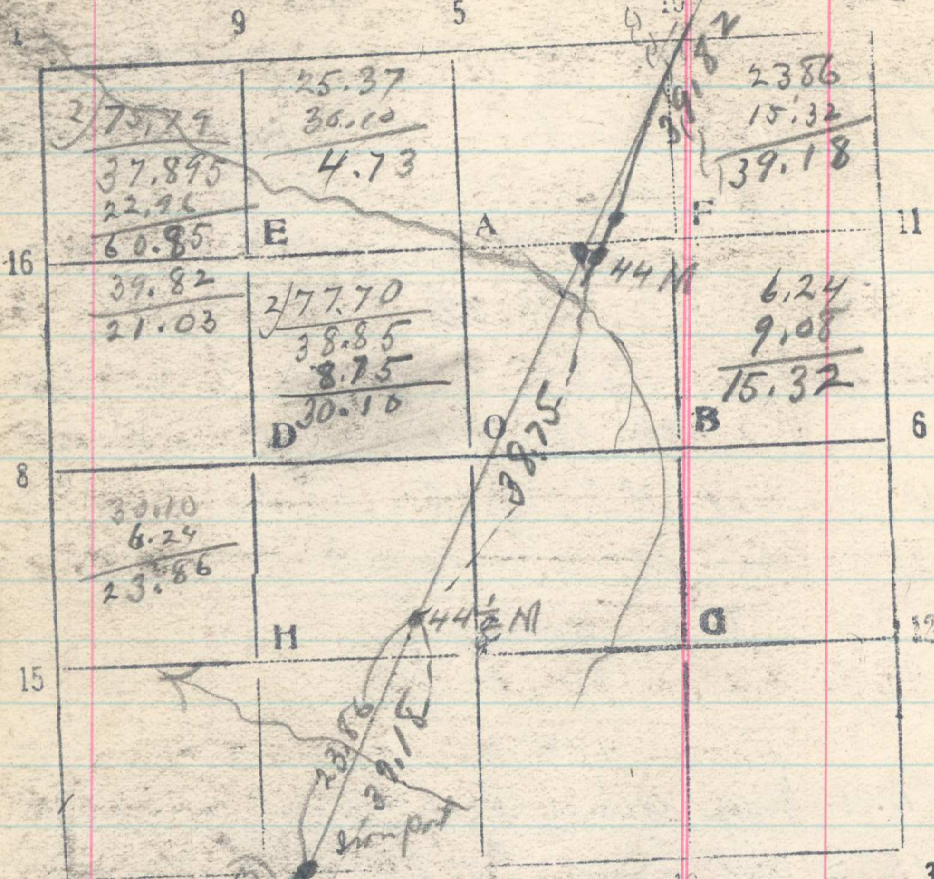


28

Sec.



From 44 M cor run S 20° W
by 16.5 on 43 1/2 M cor.
45 M Cor.

4.00 Camp N 30° W.

25.00 Set stake

21.03 Flag at end of base line N. 27° 31' E

Dist. cot. 4.31' x 5.00 = 7.57915 =

37.89 chs. + 22.96 = 60.85 - 39.18 = 21.67
 25.00 Set stake
 30.00 Base S 70° E 5.00 chs. angle 7° 20'
 cot. 7° 20' is 7.770 x 5.00 = 38.85
 38.75 44 1/2 M cor, an iron post bears
 3 lks. July 31/1919

Thence S. 20° W from 44 1/2 M cor

23.86 C.C. of sec. 14 & 12, iron post bears N 78° W 24 lks.

30.10 Ridge NW + S E, angle to E end of base,
 N 27° 20' E, Dist. Cot. 7° 20' x 5.00 =

7.770 x 5 = 38.85 - 8.75 = 30.10

31.14 Pile of rock, bears N 78° W 24 lks.

Thence S 20° W

39.18 45 M Cor, on line

From point 9.08 chs. N 20° W of 45 M Cor
 run Base S 72° 20' E 25.50 chs.
 (25.56 chs to Chazy tower) to the left

8	7.59	5	23.82	
	.15		.48	
	7.74		24.30	71.58

Angle, 18° 43' Dist 71.58 + 27.74 + 6.24 = 105.56

71.02	24.11
.56	.19
71.58	24.30

Aug 1/1919