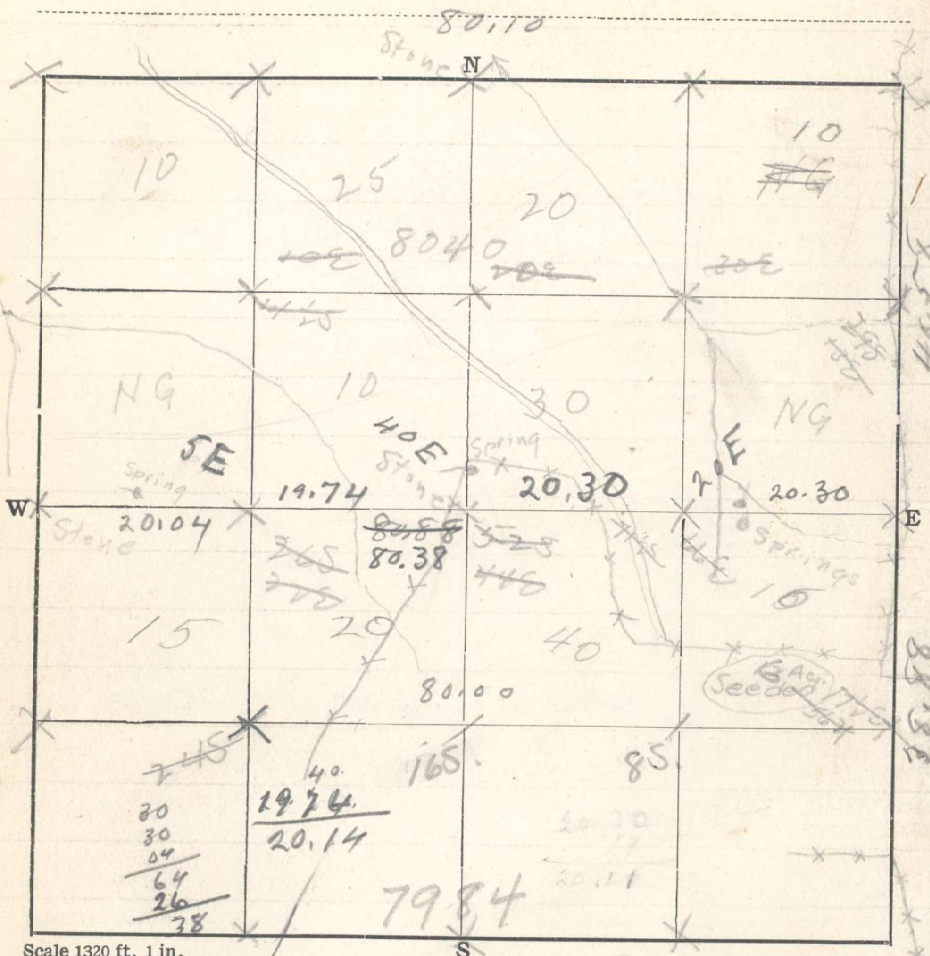


Sec. 24 T. 1 R. 33

Examiner Date 4/30 1928



S from Cr 2
 20
 4058 Cr 6 bears 9 26 lbs
 5/1 - 9 from Cr 16
 20
 40 - Turn 50° R to Cr 11 & set rock station line
 60
 8040 Cr 11 on line

S from Cr 6 on offset 26 lbs W
 20
 3265
 3888 Cr 3 bears 9 9 lbs
 5/3 - E from Cr 8
 20
 40
 55 turn L 2° 24' to R to Cr 6 & set over on line
 60
 8088 Cr 6 on line
 5/10 - W from Cr 12
 20
 40
 60
 80 Cr 15 bears 8 32 lbs
 Flag line 11 from Cr 7
 20 Cr C bears 9
 40 Cr D on line
 60 Cr A bears 9 4 9 lbs
 80

350