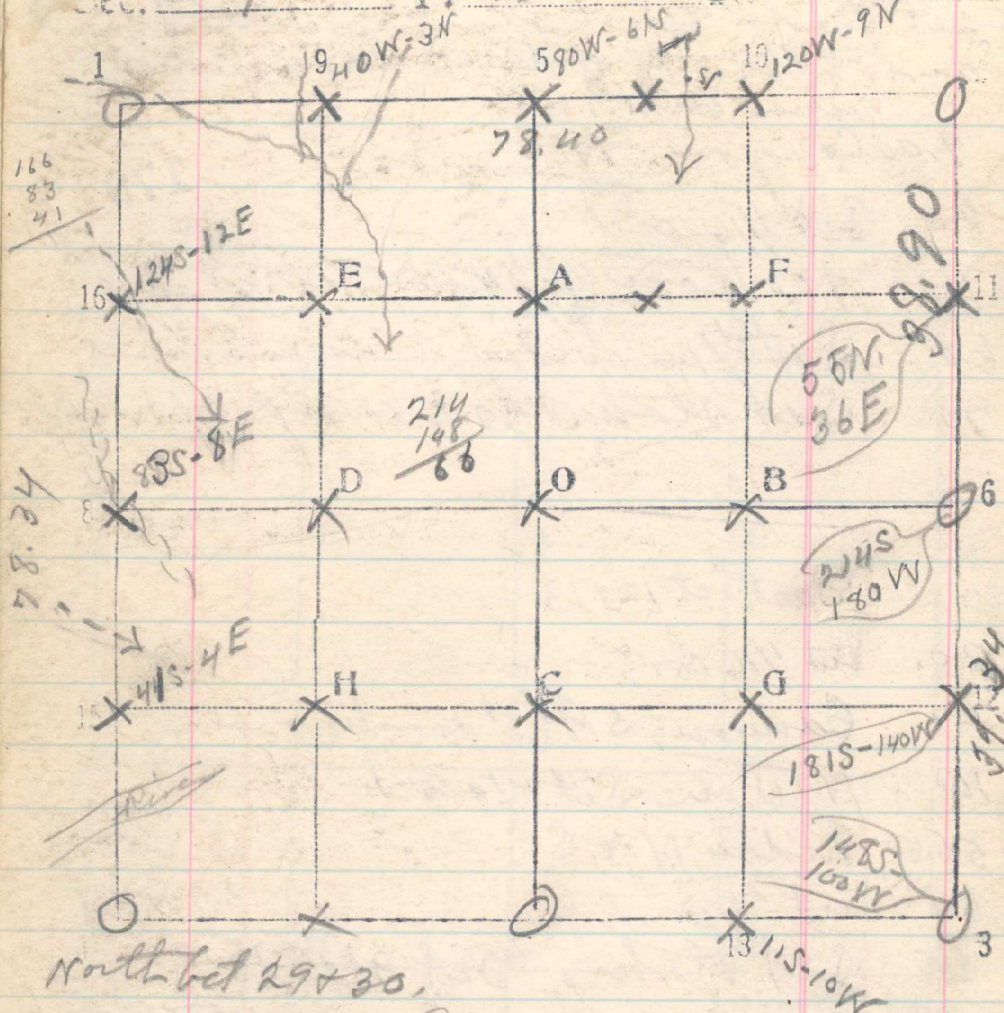


Sec. 29

T. 3N R. 26E



North bet 29 & 30.

10.00 Unatilla River, SW.

20 Set 1/16 cor.

40 No trace of 1/4 cor set stake

60 Set 1/16 cor.

78.34 Pt for cor of 19, 20, 29 & 30 bears E, 16 lks

Locate this point by old B.T.S. Pine 36 S 67° E 10  
 mhd S 29 U.R.B.T. 53 N U.R.B.T.  
 Pine 36 S 86° W 96 mhd S 30 U.R.B.T.  
 Pine 24 N 47° W 74 lks mhd S 19 U.R.B.T.  
 Fir 18 N 26° W 87 lks mhd

Thence East bet 20 & 29. 180

20 Set 1/16

40 No trace of 1/4 cor set stake

60 Set 1/16 Sept 26, 1918

78.40 Old cor of 20, 21, 28 & 29, a mid stone mark  
 bears N 1/2 lks.

Thence South bet Secs. 28 & 29.

9.90 Creek S 20° E

15.00 Unatilla River, SW.

20 Set 1/16 cor.

38.90 Pt. for 1/4 cor bears E 72 lks.  
 Locate this point by measuring <sup>the recorded distance</sup> 165 lks.  
 from B.T. in Sec 28 and 200 lks. from  
 B.T. in Sec 29. From this point.

Pine 20 bears N 8 1/2° E 165 mhd 1/4 S B.T.

Pine 30 " N 17° W 290 " 1/4 S B.T.  
 Sept 30, 1915