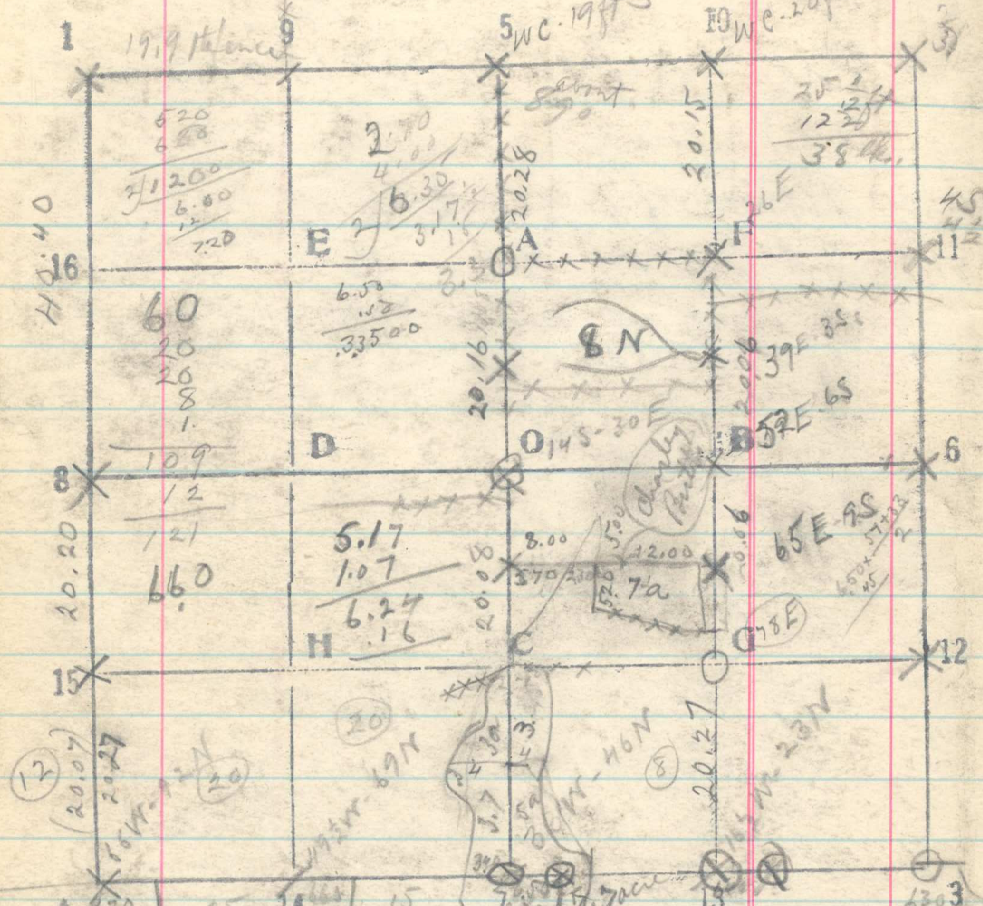


3
Sec. 36 x T. 3 N R. 34 E



From 1/4 cor of 70 SW R. 34 & 35 E
run west by color

Set 13 - S. 36

40 Set 1/4 cor for S. 36 in place of field

60 Set 14 - S. 36 in place of field

70.66 Set stake for cor of 35 & 36

Nov. 25 Locate cor of 25, 26, 35 & 36 in corner
of roads E & W, and N & S.

195
Thence run east
19.89 On line with fence to N.
39.74 On line with fence to S. Set 1/4 cor.
Thence continue East on same line

20 Set 1/16 cor

39.62 Intersect pt for cor of 25, 30, 31 & 36.
From 1/4 cor 5 min. S. Fence line

20.15 Fence cor. N. S & W. beam E. 36 lbs.
20.28 Pt for 1/4 cor, identified by M.S. beam E. 30 lbs.
40.44 Fence cor. N & W. beam E. 35 lbs.
41.16 Set 1/16 cor C - S. 36

50.63 Intersect 1/4 cor for S. 36.
From 10 - S - 36 run South

20.15 Fence cor. S. & W. width 1/16 cor.

20.15 Set 1/32 cor

40.15 Set 1/16 cor B - S. 36

50.15 Set 1/32 cor. 36 beam east. 78 lbs. dist.
60.33 1/16 cor G - S. 36 beam east. 78 lbs. dist.
a stone mark in M.S.

South bet. 35 & 36

40.40 Notation of 1/4 cor set stake

60.60 Notation of 1/16 cor set stake

50.87 Intersect cor of 35 & 36 Nov. 25, 1918.