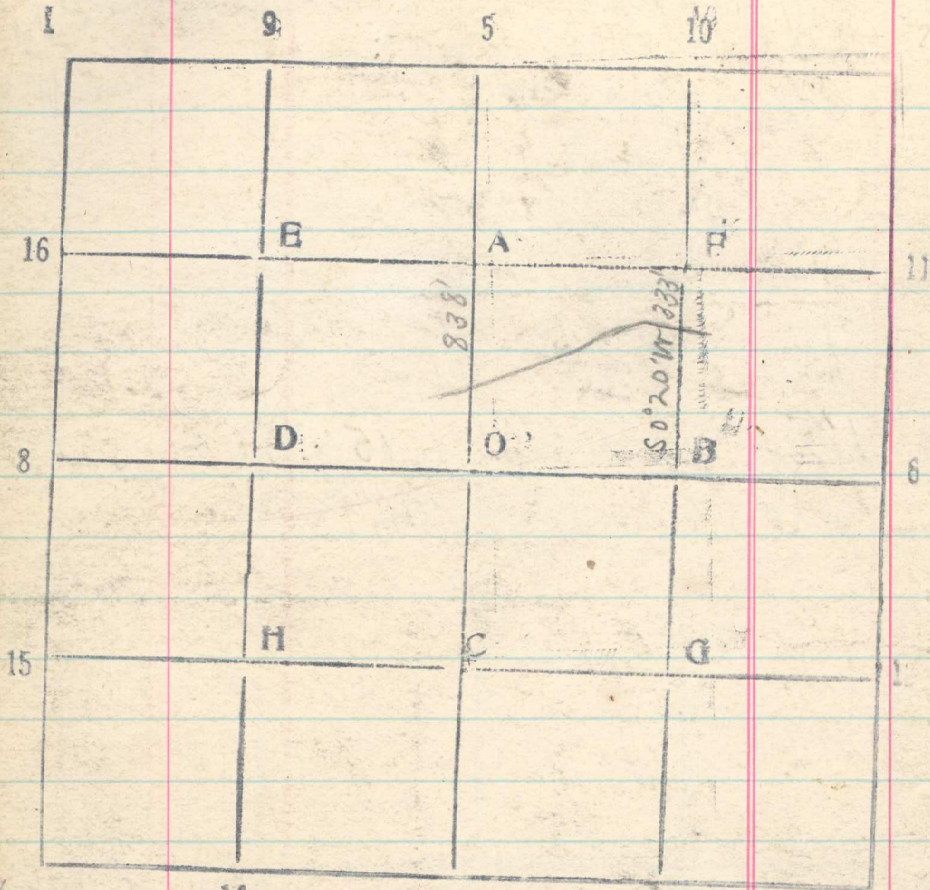


Sec. 4 T. 2N R. 35E



Beginning at a point on East edge of SW

SE¹/₄ sec. 3, 333 feet south of NE corner
 of said SW¹/₄ sec. 3, and running thence
 N80°35'W, 85 feet,
 West, 100 ft
 S67°W 97.8 ft

140
 140
 120 235

S60°04'W 132.4 ft
 S62°04'W 262.55 ft
 S65°19'W 580.8 ft
 S72°W 100 ft
 S83°W 73 ft to intersection
 of pipe line with W. bdy of SW¹/₄ NE¹/₄
 Sec. 4, at a point 838 ft. South
 of NW cor. of ^{sec. 4} SW¹/₄ NE¹/₄ sec. 4

	N	S	E	W
N80°35'W	85	14		84
West	100			100
S67°W	97.8	38		90
S60°4'W	132.4	66		114
S62°4'W	262.55	123		232
S65°19'W	580.8	243		528
S72°W	100	31		95
S83°W	73	9		72
North	838	838		
East	1310		333	1310
South	333	852	843	1310 1315